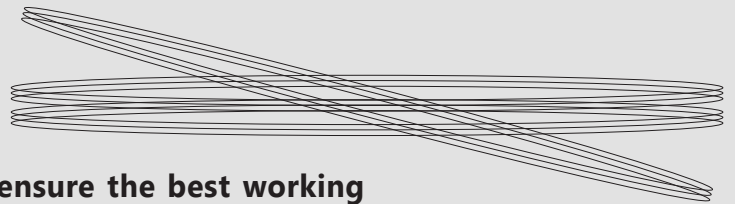


## SOLA WHT



The ambient temperature between  $-40^{\circ}\text{C}$ ~ $50^{\circ}\text{C}$  to ensure the best working performance of SOLA WHT.

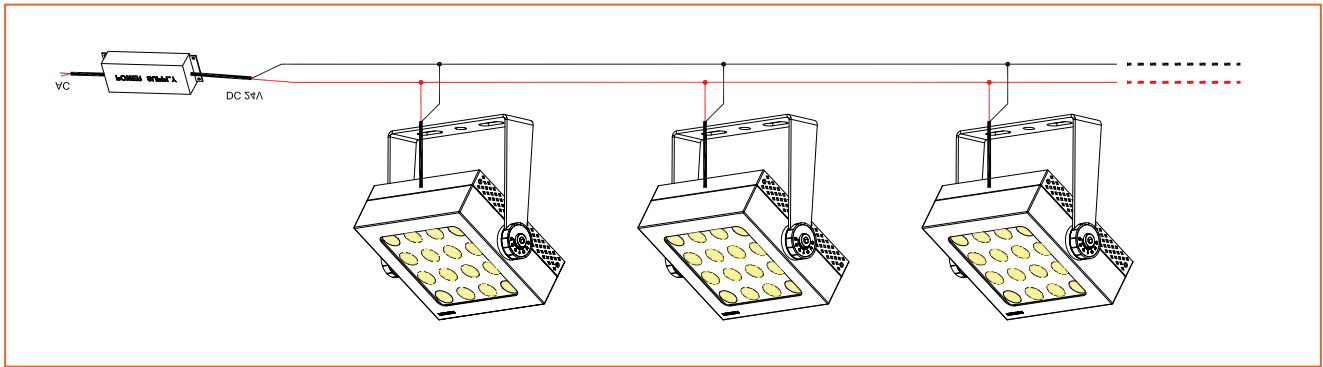
### Installation Instructions

Must ensure the person who must be qualified, full-of experienced in electrical and construction. And must meet relative regulation and standards to install luminaire.

Before installing this product, please visit the product page at [www.beamever.com](http://www.beamever.com) for the latest installation instructions.

Please do the regularly check for ensuring maintain the protection requirement, e.g., either connection is still steady & safe.

## Verify the electrical plan and all necessary surge protection requirements



1. Please use power supply with constant voltage DC24V to feed luminaires. And make sure no less than 21.5V to supply it.

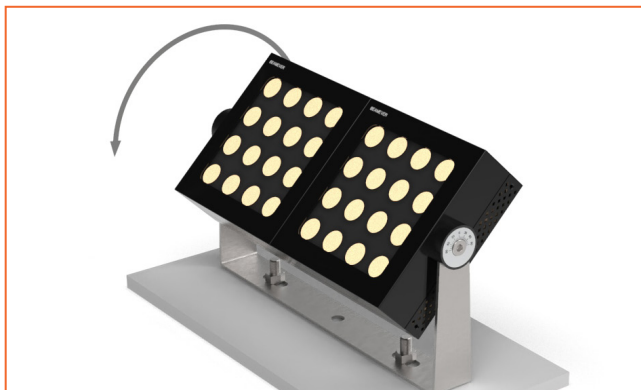
2. The total power of each circuit branch cannot be more than 80% of the total power of the power supply.

3. Ensure that main power supply is off before installing or wiring a luminaire.

4. Please ensure the male and female connectors connected correctly and no short circuit before power on.

5. Luminaires working environment should be ventilated and clear, can not be covered with items, please do regular cleaning to avoid dust accumulation, also important do the regular inspection of each connector is abnormal, each sealing interface whether still meet protection requirements, whether the join wire still working and so on.

## Installation Option



### Flating Mounting Bracket Installation

Step 1: put light as correct position above the flating mounting bracket.

Step 2: after adjust the angle, position, and other things, apply screws to steady the light with bracket.

Step 3: ensure light's base is very stable close with flating mounting bracket.

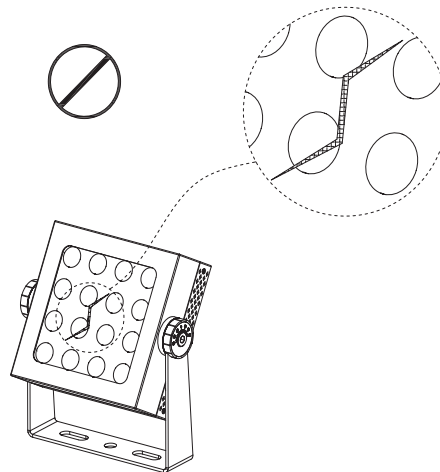
---

## Use caution when installing luminaire nodes

In the replacement and maintenance of products, make sure to cut off all the power before start maintenance, in order to prevent electric shock or short circuit. After troubleshooting, it is necessary to correctly install the various components to ensure that the electrical and structural requirements meet the original requirements and then connect power.

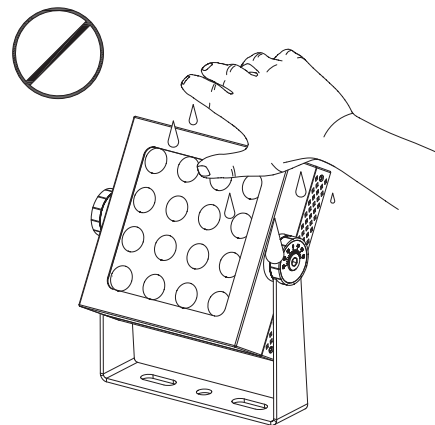
### Do not continually use when

Any part or accessories damaged, or something changed which you can see clearly. For example, the lens, profiles, clips, power cables, or other parts.



### Please be careful when touch luminaire

Do not touch the luminaire with wet hands or wet objects in case of electric shock.



## Additional Notice

Please note, specifications are subject to change without notice. and all information contained within this instruction manual is provided in good faith. No representation or warranty as to the accuracy or completeness of the information included herein is given and any liability for any action in reliance thereon is disclaimed.