

Beamever

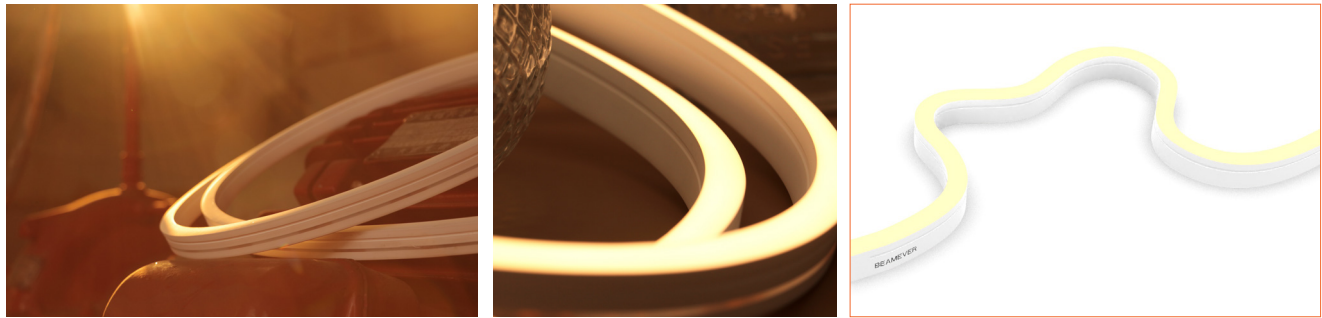
LINIO NEON I220 SV

IP67 protection with high
performance silicone, UV
resistant, solvents resistant.
Seamless line in 30Mtrs roll.

One BIN Only to ensure perfect
color consistency



Beamever

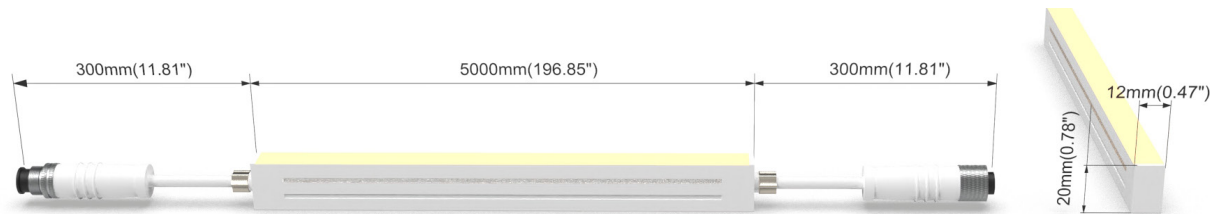
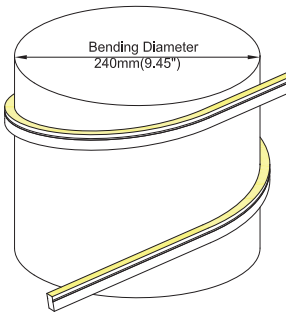


LINIO NEON 1220 SV

- Side view, horizontal bending with radius of 120mm / 4.72".
- DC24V,Cross section size 12mm x 20mm /0.47" x 0.79" (W x H).
- IP67 protection with high performance silicone, UV resistant, solvents resistant.
- 30M/reel maximum. Max. Run length refers to single side feed in serial connection.
- Easy to be cut and reconnected at project sites.Custom length are available as well.
- Wide color temperature range and Multiple power to meet different lighting needs.

Product Benefits:

- Homogeneous light effect & high light efficiency.
- Extremely durability and flexibility thanks to high performance materials.
- Not just good-looking but also weatherproof.



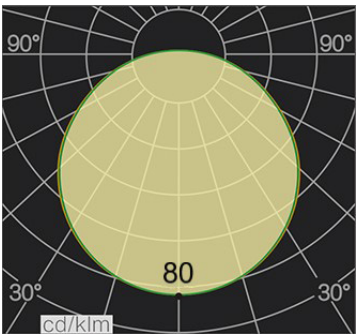
Electrical data

Voltage	DC24V (23.5V _{min} 24.5V _{max})
LED PIN Temperature	Max. 59.4°C /138.92°F
Storage Temperature	-25°C /-13°F _{min} 60°C /140°F _{max}
Min. Ambient Tempt.(Ta _{min})	-25°C /-13°F
Max. Ambient Tempt.(Ta _{max})	55°C /131°F@5W, 45°C /113°F@10W, 35°C /95°F@15W
Power(W/m W/ft)	5/1.5, 10/3.1, 15/4.6
CRI	Ra94
Unit Cut	50mm

LM/M	5W	10W	15W
2700K	146	324	436
3000K	156	346	492
3500K	160	355	500
4000K	150	346	475
5300K	155	349	490
Max. Run Length (M)	27	17	14

Important notice

- The given data are typical values due to the tolerances of the production process and the electrical components, values for light output and electrical power can vary up to 10%.
- The given color temperature is neon flex (after extrusion) color temperature.
- Standard cable length is 30cm, if longer cable required, please contact us.
- Male and female connectors are available if needed.
- It is IK08 rated. Please use protection materials if it is walk over application.



Order code

SERIES NAME	COLOR	LENGTH	POWER	CABLE ENTRY
LNS	27= 2700K	05000=5M/196.85"	005=5W	F=FRONT
	30= 3000K		010=10W	S=SIDE
	35= 3500K		015=15W	B=BOTTOM
	40=4000K			
	53=5300K			

Eg: LNS 27-10000-015-B: LINIO NEON 1220 SV 2700K, 10M/ reel,15W/M,Bottom cable entry.



Front Cable Entry
Suitable for power feed in or straight connection. Do not bend down or aside too sharp.



Side Cable Entry
It can achieve perfect seamless light connection if the cabling space is allowed on the side.

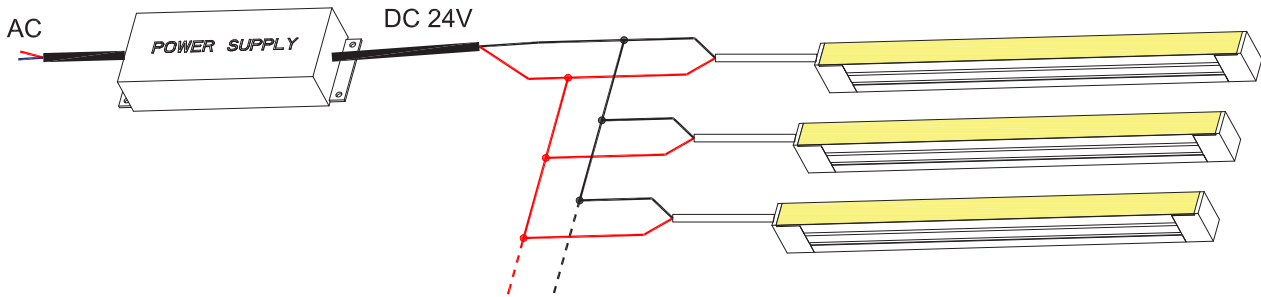


Bottom Cable Entry
It can achieve perfect seamless light connection if the cabling space is allowed from the bottom.

Accessories

Art.#	Description	Picture	Art.#	Description	Picture
SC002	1m anodized aluminium channel for LINIO NEON 1220 SV		MF013	Extension connectors, 1m IP67, 2PIN	
M0003	Clips 20mm 316L (Clip required every 25cm, stainless steel)		MF014	Extension connectors, 5m IP67, 2PIN	
E0004	End cap with 30cm cable 2PIN for LINIO NEON 1220 SV		XLG-150-24-A	PSU 24V/150W IP67, Non-dimmable, White, 100-305V supply	
E0005	Closed end cap for LINIO NEON 1220 SV		ELG-150-24B	PSU 24V/150W IP67, 3 in 1 dimming function, White, 100-305V supply	
G0002	Silicone glue		ELG-150-24DA	PSU 24V/150W IP67, DALI control technology, White, 100-305V supply	
MF012	Male and female connectors, 30cm IP67, 2PIN				

Wiring connection



Application

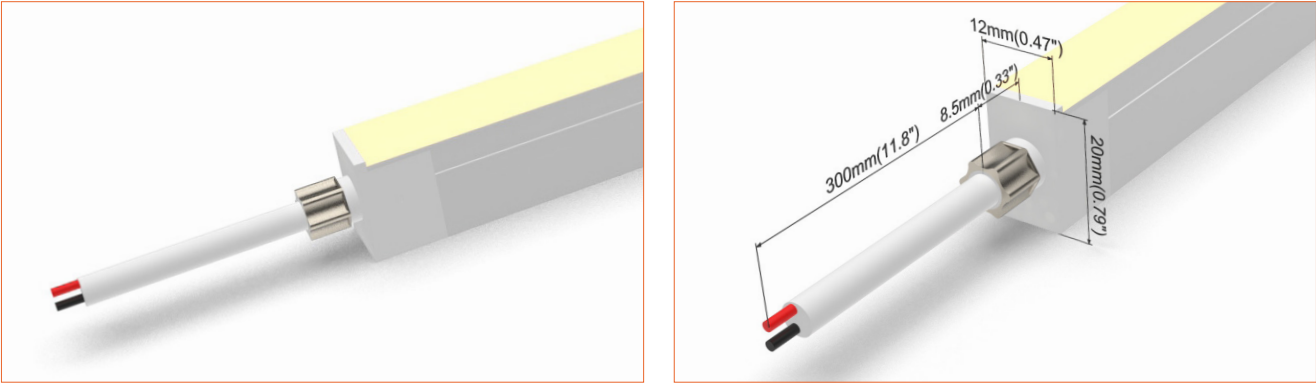


Where to use the product?

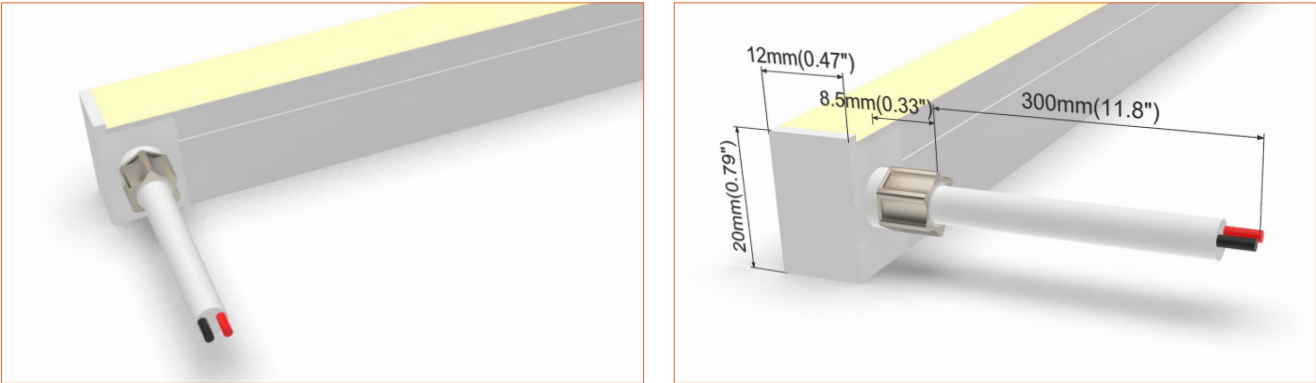
It can achieve stunning lighting effects, effectively and elegantly highlighting certain areas in architectural lighting projects and tracing straight, curved and even round contours with homogeneous lighting.Its excellent flexibility and cuttability frees you to follow up any light inspiration and create all kinds of shaped lighting with ease.

It is an ideal option for architectural lighting , facade accent lighting, landscape lighting....many applications, let' s light up and beautify by creating stylish lighting effects.

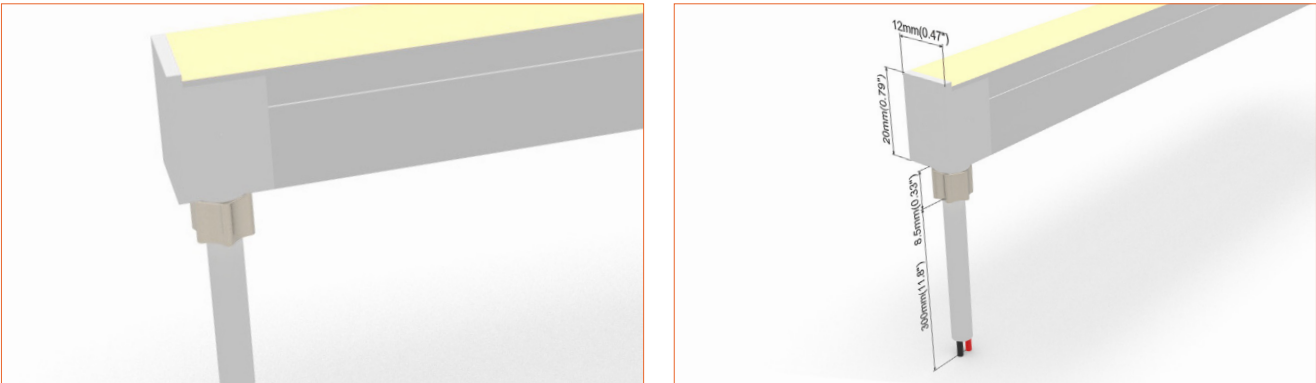
Front Cable Entry
Suitable for power feed in or straight connection. Do not bend down or aside too sharp.



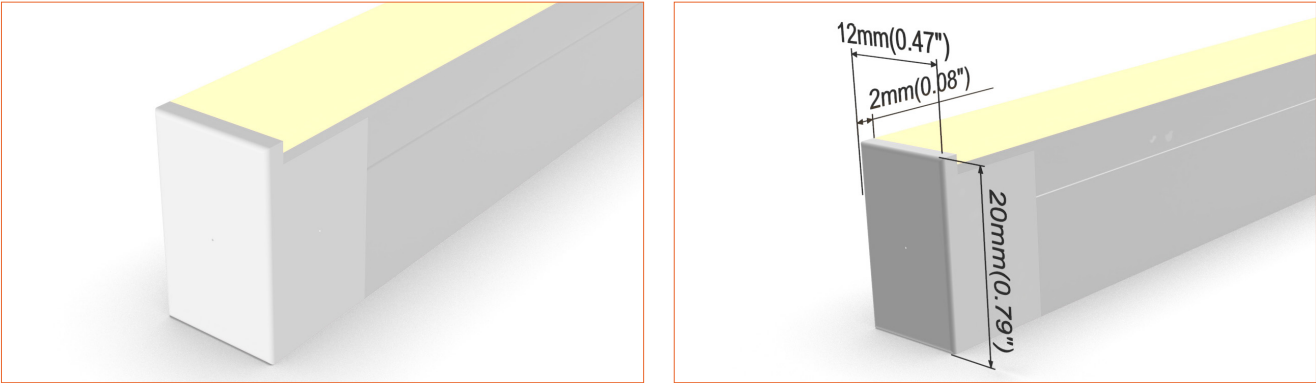
Side Cable Entry
It can achieve perfect seamless light connection if the cabling space is allowed on the side.



Bottom Cable Entry
It can achieve perfect seamless light connection if the cabling space is allowed from the bottom.



Closed end cap
Elegant injecting closed end cap in same size as neon flex body.



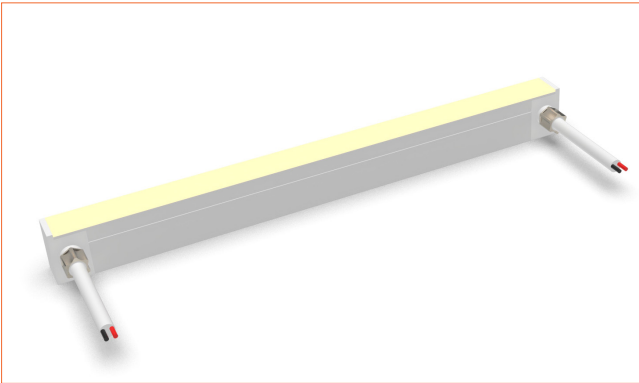
Front double wire end: 30cm cable from two ends, front cable entry.



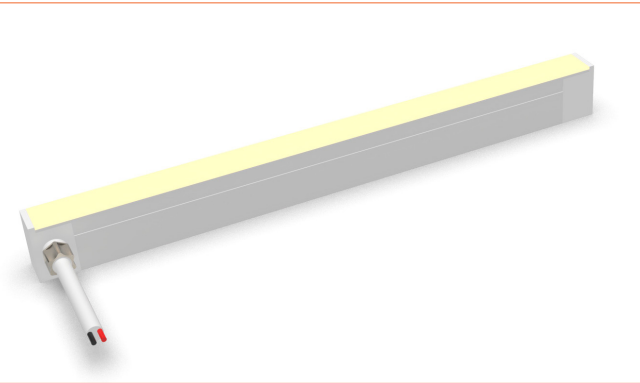
Front single wire end: 30cm cable from one end, front cable entry.



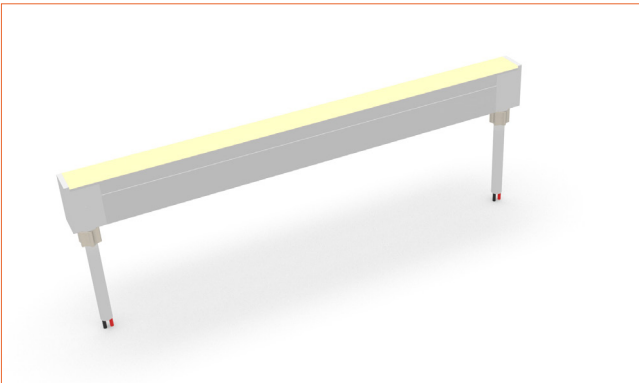
Side double wire end: 30cm cable from two ends, side cable entry.



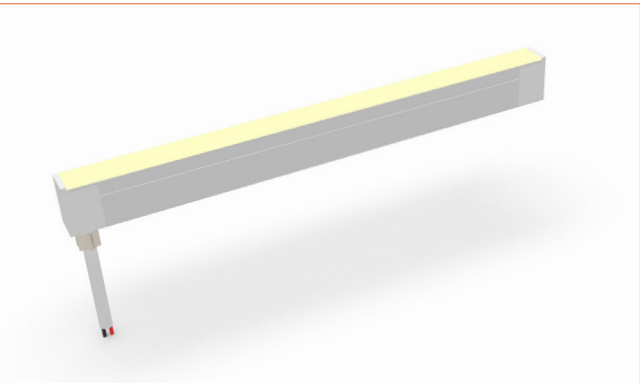
Side single wire end: 30cm cable from left one only (side cable entry), other end with closed end cap.

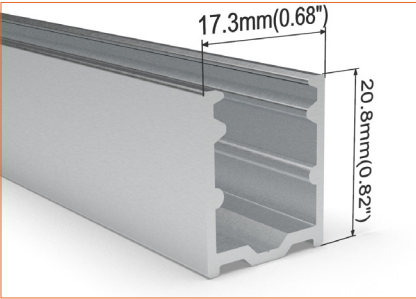
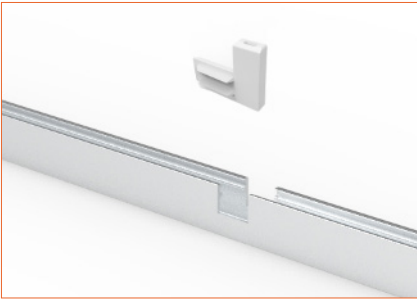


Bottom double wire end: 30cm cable from two ends, bottom cable entry.

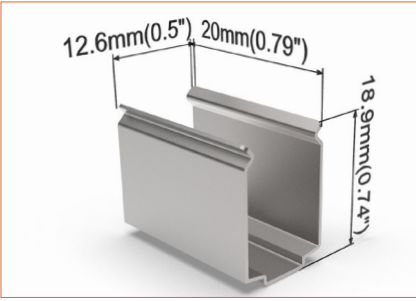
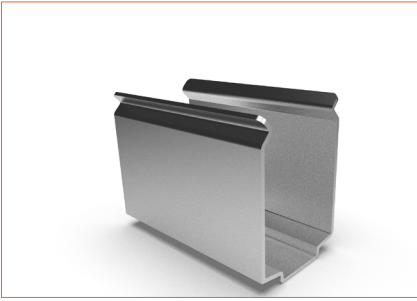


Bottom single wire end: 30cm cable from left one only (bottom cable entry), other end with closed end cap.

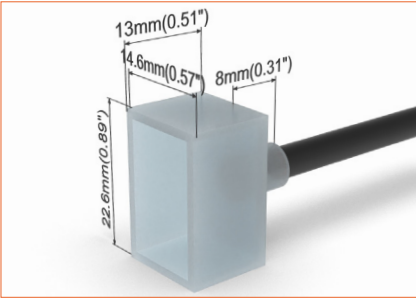
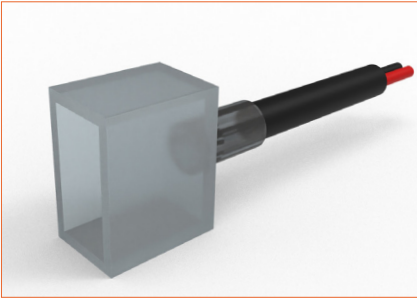




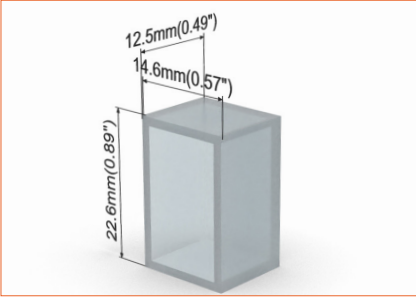
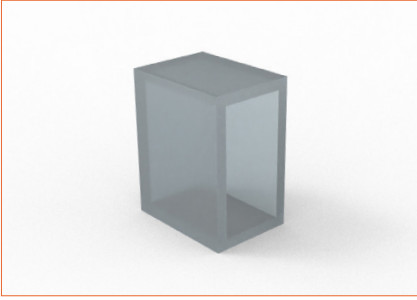
SC002
Straight aluminium channel
Length 1mtr



M0003
Stainless steel mounting clip



E0004
End cap with 30cm cable



E0005
Closed end cap