

Beamever

UNIO NEON I615 TV RGBW

IP67 protection with high
performance silicone, UV
resistant, solvents resistant.
Seamless line in 30Mtrs roll.

One BIN Only to ensure perfect
color consistency



Beamever

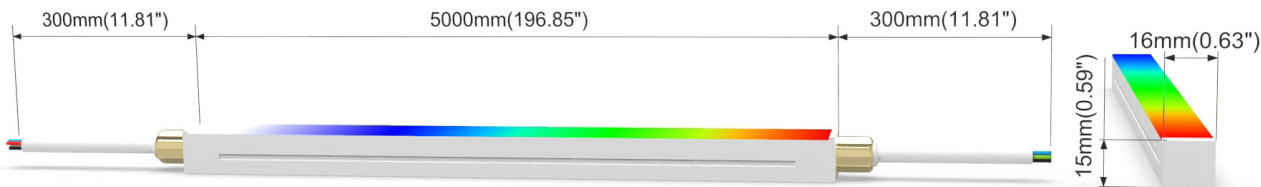
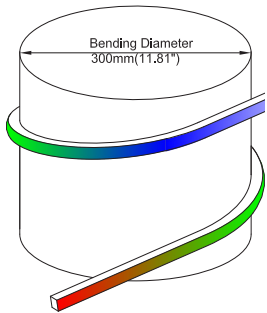


LINIO NEON 1615 TV RGBW

- Top view, Vertical bending with radius of 150mm / 5.9".
- DC24V, Cross section size 16mm x15mm/0.63" x0.59"(W xH).
- IP67 protection with high performance silicone, UV resistant, solvents resistant.
- 30M/reel maximum. Max. Run length refers to single side feed in serial connection.
- Easy to be cut and reconnected at project sites.Custom length are available as well.
- Let you to create bolder and more vivid colors than with RGB alone.

Product Benefits:

- Homogeneous light effect & high light efficiency.
- Extremely durability and flexibility thanks to high performance materials.
- Not just good-looking but also weatherproof.



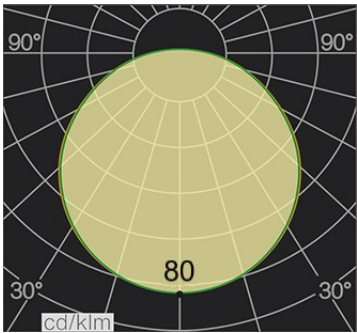
Electrical data

Voltage	DC24V (23.5V _{min} , 24.5V _{max})
LED PIN Temperature	Max. 59.4°C /138.92°F
Storage Temperature	-25°C /-13°F _{min} , 60°C /140°F _{max}
Ambient Temperature	Ta _{min} = -25°C /-13°F; Ta _{max} =35°C /95°F@15W Ta _{max} =55°C /131°F@3.75W(Single Color)
Power(W/m W/ft)	15/4.6
Efficacy(lm/W)	36

CCT	LM/Mtr	Max. Watt (W/M)	Max. Run Length (M)	Unit Cut (MM)
R	63	3.75	10	125
G	192	3.75	10	125
B	57	3.75	10	125
W27	205	3.75	10	125
W40	219	3.75	10	125
W53	208	3.75	10	125
RGBW40	531	15	10	125

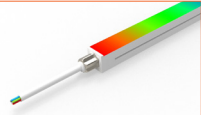
Important notice

- The given data are typical values due to the tolerances of the production process and the electrical components, values for light output and electrical power can vary up to 10%.
- The given color temperature is neon flex (after extrusion) color temperature.
- Standard cable length is 30cm, if longer cable required, please contact us.
- Male and female connectors are available if needed.
- It is IK08 rated. Please use protection materials if it is walk over application.

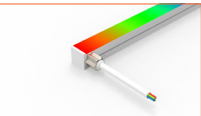


Order code

SERIES NAME	COLOR	LENGTH	POWER	CABLE ENTRY
LNT RGBW	27= 2700K	05000=5M/196.85"	015=15W	F=FRONT
	40= 4000K			S=SIDE
	53= 5300K			B=BOTTOM



Front Cable Entry
Suitable for power feed in or straight connection. Do not bend down or aside too sharp.



Side Cable Entry
It can achieve perfect seamless light connection if the cabling space is allowed on the side.



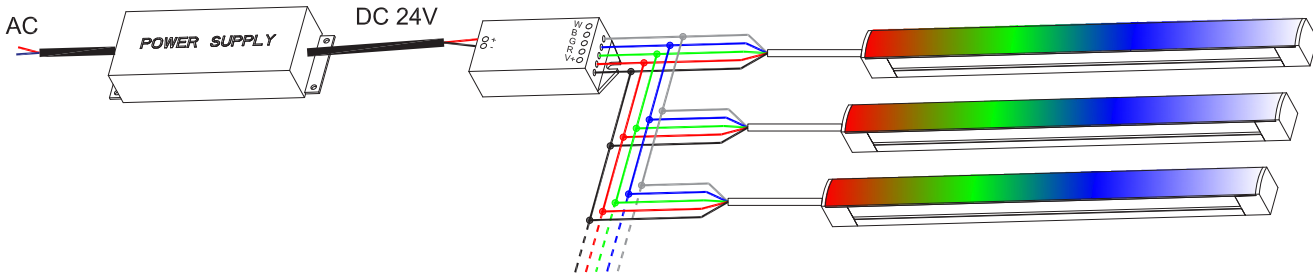
Bottom Cable Entry
It can achieve perfect seamless light connection if the cabling space is allowed from the bottom.

Eg: LNT RGBW40-02500-015-S: LINIO NEON 1615 TV RGBW, W=4000K , 2.5M/reel,15W/M, Side cable entry.

Accessories

Art.#	Description	Picture	Art.#	Description	Picture
SC001	1m anodized aluminium channel for LINIO NEON 1615 TV		MF021	Male and female connectors, 30cm IP67, 5PIN	
BC001	Clips 20mm 316L (Clip required every 25cm, stainless steel)		MF022	Extension connectors, 1m IP67, 5PIN	
M0002	Clips 20mm 316L (Clip required every 25cm, stainless steel)		MF023	Extension connectors, 5m IP67, 5PIN	
E0002	End cap with 30cm cable 5PIN for LINIO NEON 1615 TV		XLG-150-24-A	PSU 24V/150W IP67, Non-dimmable, White, 100-305V supply	
E0003	Closed end cap for LINIO NEON 1615 TV		ELG-150-24B	PSU 24V/150W IP67, 3 in 1 dimming function, White, 100-305V supply	
G0002	Silicone glue		M4+M4-3A	RGBW controller, DC24V, 3A*4Channel, Max 12A IP20, Support remote control	

Wiring connection



Application

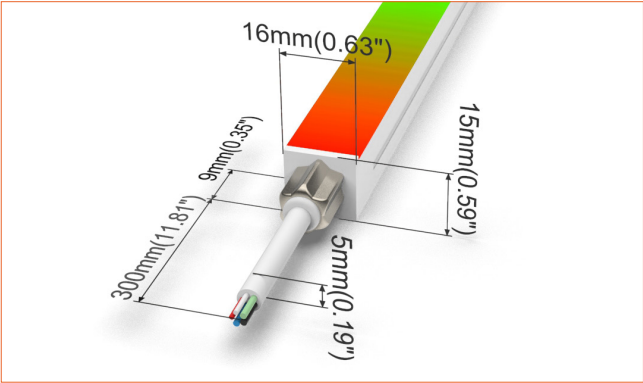
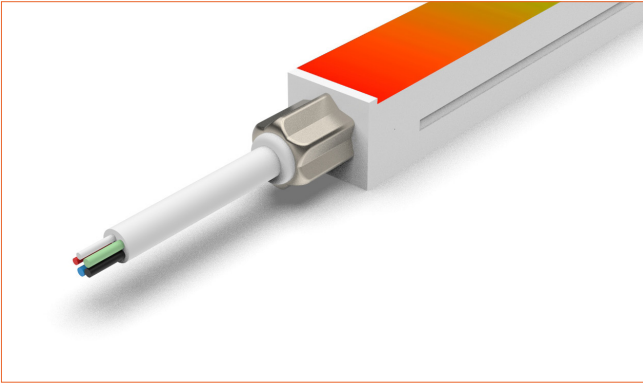


Where to use the product?

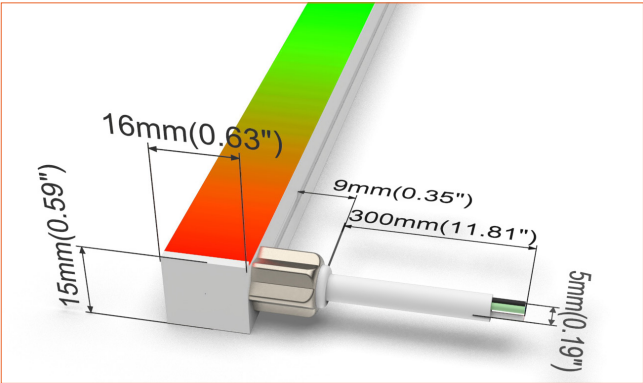
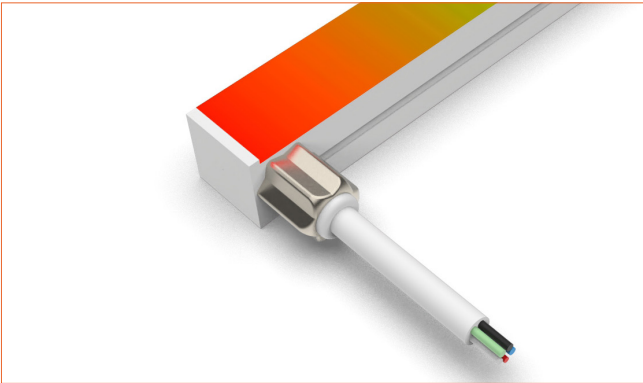
LINIO NEON 1615 TV RGBW lets you unlock thousands of color through red-green-blue-white color mixing. On one hand, It is incredibly flexibility and cuttability offers great freedom of design, on the other hand, it can be controlled simply by common DMX controller plus DMX decoders to create lots of vivid lighting effects.

This is a fantastic product for commercial, residential, architectural, and decorative purposes. You can use it in Restaurants, Airports, shopping malls, Bars, nightclubs, entertainment venues.....countless application places, use your imaginations !!!

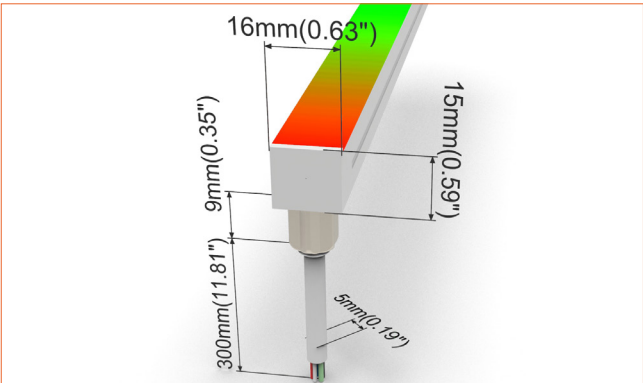
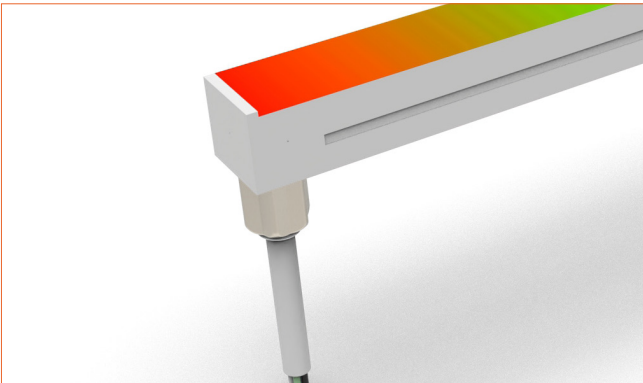
Front Cable Entry
Suitable for power feed in or straight connection. Do not bend down or aside too sharp.



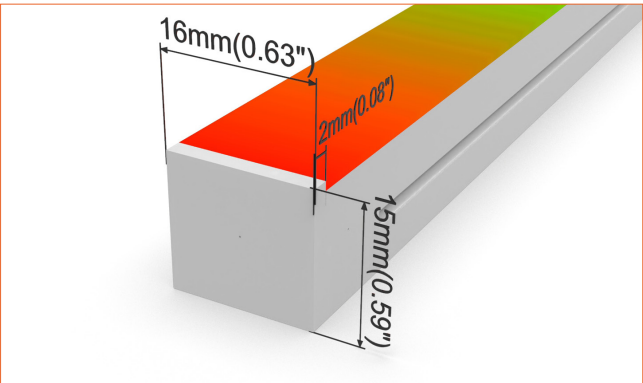
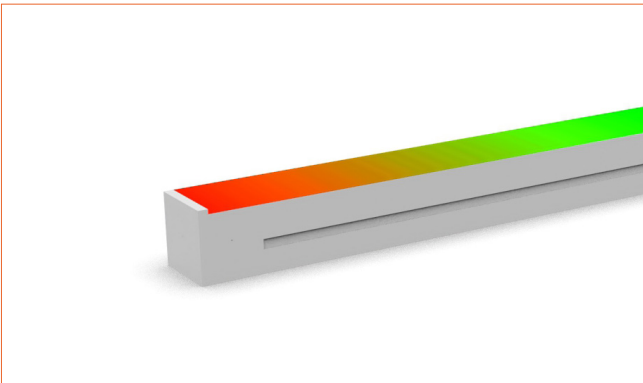
Side Cable Entry
It can achieve perfect seamless light connection if the cabling space is allowed on the side.



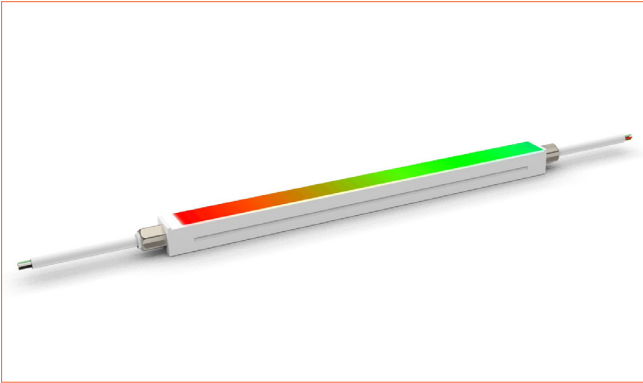
Bottom Cable Entry
It can achieve perfect seamless light connection if the cabling space is allowed from the bottom.



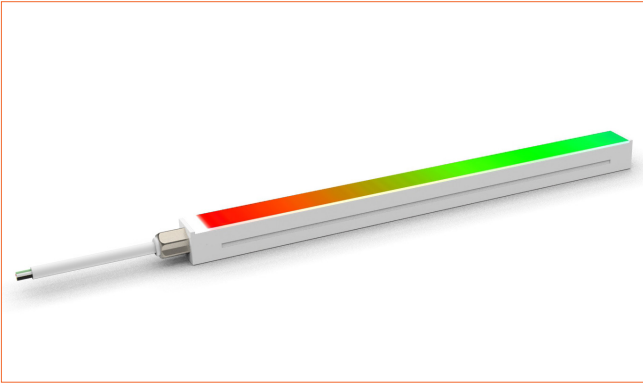
Closed end cap
Elegant injecting closed end cap in same size as neon flex body.



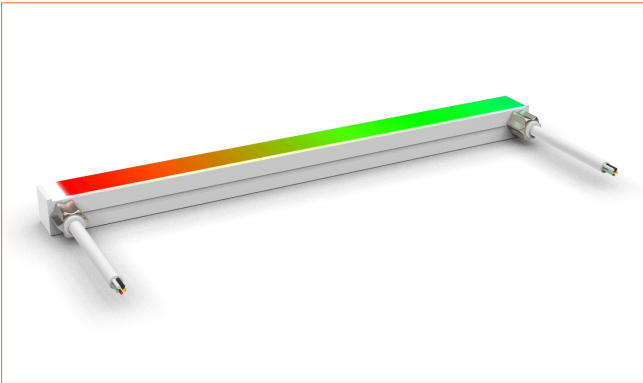
Front double wire end: 30cm cable from two ends, front cable entry.



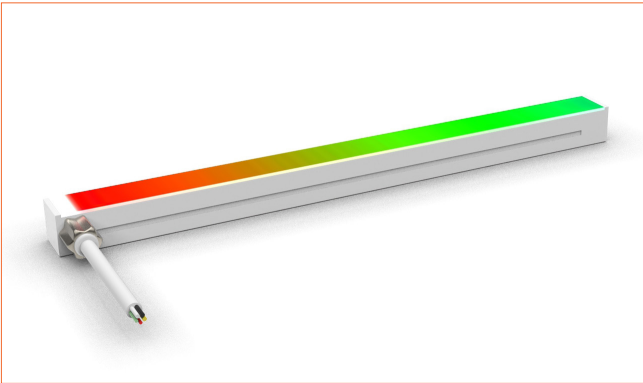
Front single wire end: 30cm cable from one end, front cable entry.



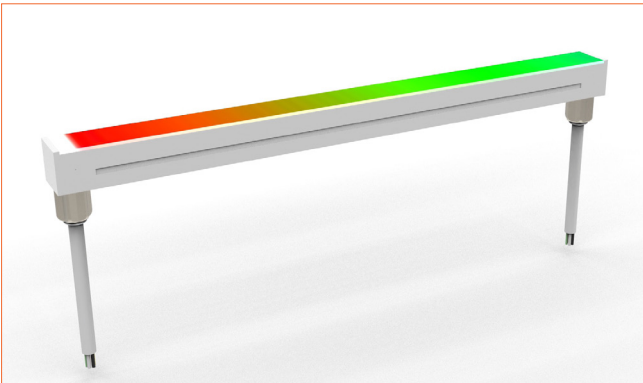
Side double wire end: 30cm cable from two ends, side cable entry.



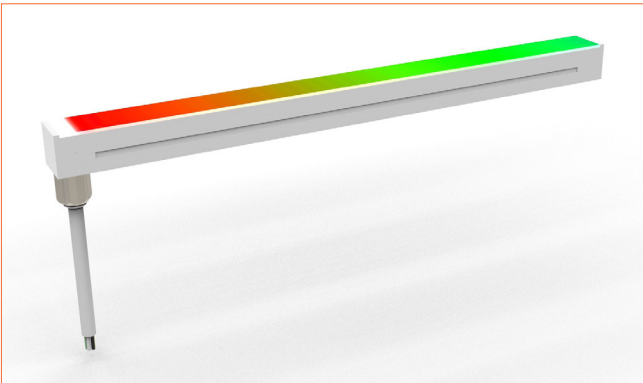
Side single wire end: 30cm cable from left one only (side cable entry), other end with closed end cap.

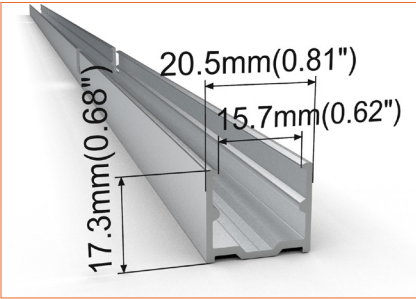
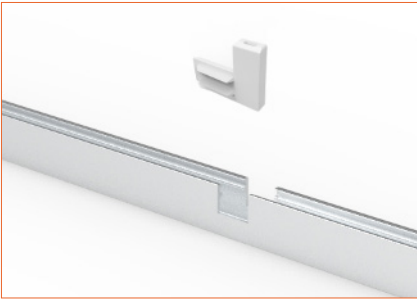


Bottom double wire end: 30cm cable from two ends, bottom cable entry.

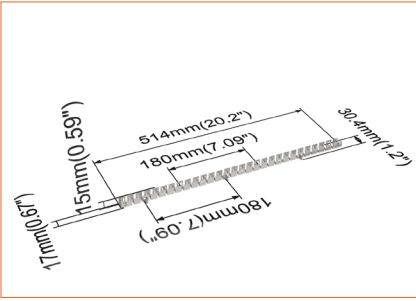
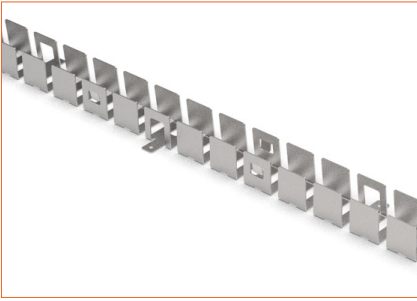


Bottom single wire end: 30cm cable from left one only (bottom cable entry), other end with closed end cap.

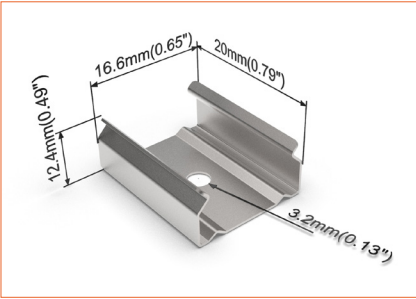
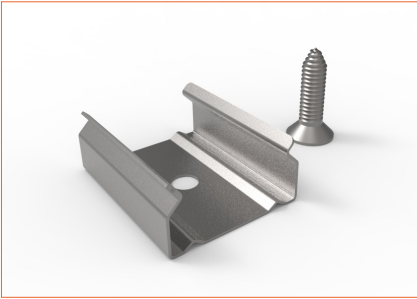




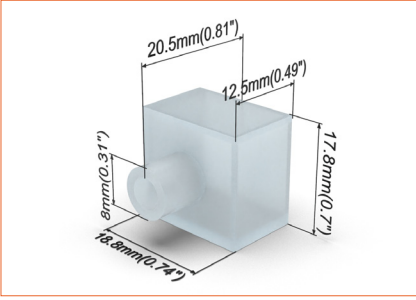
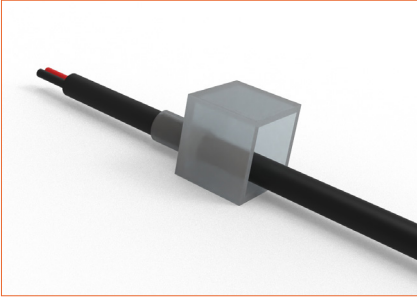
SC001
Straight aluminium channel
Length 1mtr



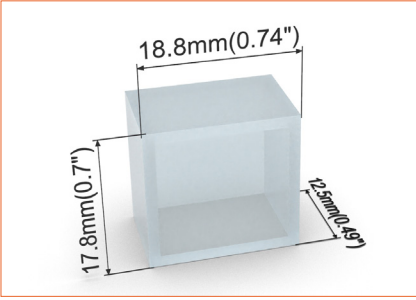
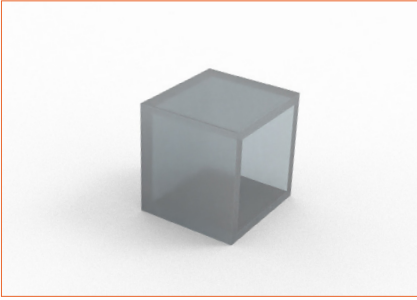
BC001
Bendable stainless steel channel
Length 0.5mtr



M0002
Stainless steel mounting clip



E0002
End cap with 30cm cable



E0003
Closed end cap