

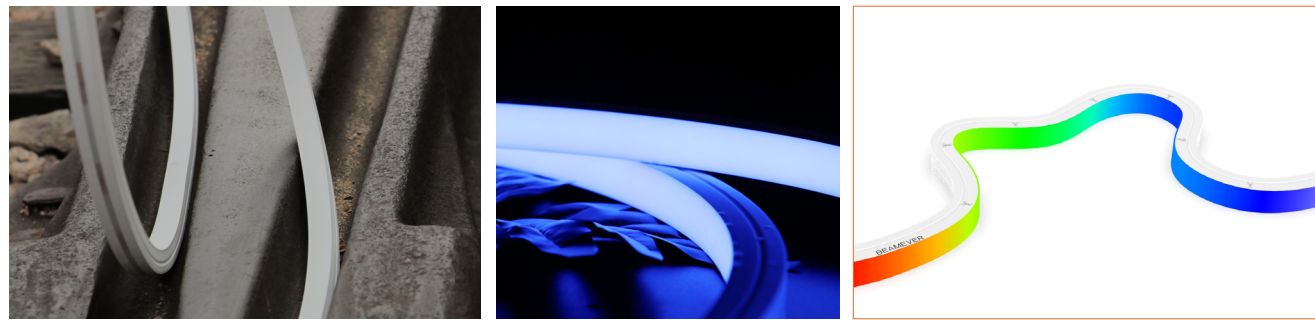
Beamever

LINIO NEON 1615 TV RGB

IP67 protection with high performance silicone, UV resistant, solvents resistant. Seamless line in 30Mtrs roll.

One BIN Only to ensure perfect color consistency



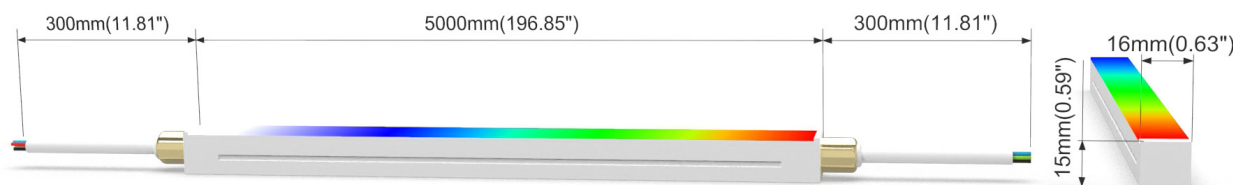
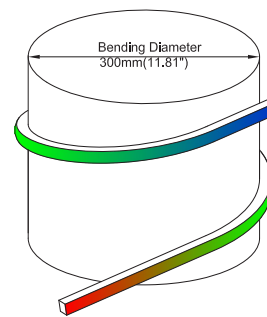


LINIO NEON 1615 TV RGB

- Top view, Vertical bending with radius of 150mm / 5.9".
- DC24V, Cross section size 16mmx15mm/0.63" x0.59" (WxH).
- IP67 protection with high performance silicone, UV resistant, solvents resistant.
- 30M/reel maximum. Max. Run length refers to single side feed in serial connection.
- Easy to be cut and reconnected at project sites. Custom length are available as well.
- Offer millions of colors using red-green-blue color mixing.

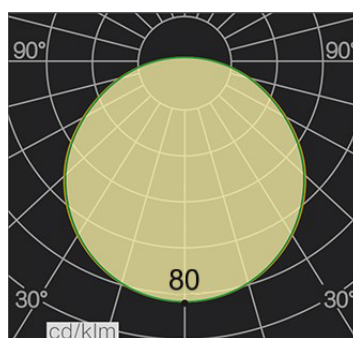
Product Benefits:

- Homogeneous light effect & high light efficiency.
- Extremely durability and flexibility thanks to high performance materials.
- Not just good-looking but also weatherproof.



Electrical data

Voltage	DC24V (23.5V _{min} , 24.5V _{max})
LED PIN Temperature	Max. 59.4°C /138.92°F
Storage Temperature	-25°C /-13°F _{min} ; 60°C /140°F _{max}
Ambient Temperature	T _{a min} = -25°C /-13°F; T _{a max} = 35°C /95°F@11W T _{a max} = 50°C /122°F@3.75W(Single Color)
Power(W/m W/ft)	11/3.4
Efficacy(lm/W)	29.2



CCT	LM/Mtr	Max. Watt (W/M)	Max. Run Length (M)	Unit Cut (MM)
R	56	3.7	13	62.5
G	160	3.7	13	62.5
B	36	3.7	13	62.5
RGB	264	11	13	62.5

Important notice

- The given data are typical values due to the tolerances of the production process and the electrical components, values for light output and electrical power can vary up to 10%.
- The given color temperature is neon flex (after extrusion) color temperature.
- Standard cable length is 30cm, if longer cable required, please contact us.
- Male and female connectors are available if needed.
- It is IK08 rated. Please use protection materials if it is walk over application.



Order code

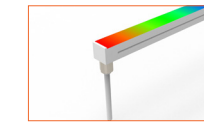
SERIES NAME	COLOR	LENGTH	POWER	CABLE ENTRY
LNT RGB	RGB	05000=5M/196.85"	011=11W	F=FRONT S=SIDE B=BOTTOM



Front Cable Entry
Suitable for power feed in or straight connection. Do not bend down or aside too sharp.



Side Cable Entry
It can achieve perfect seamless light connection if the cabling space is allowed on the side.



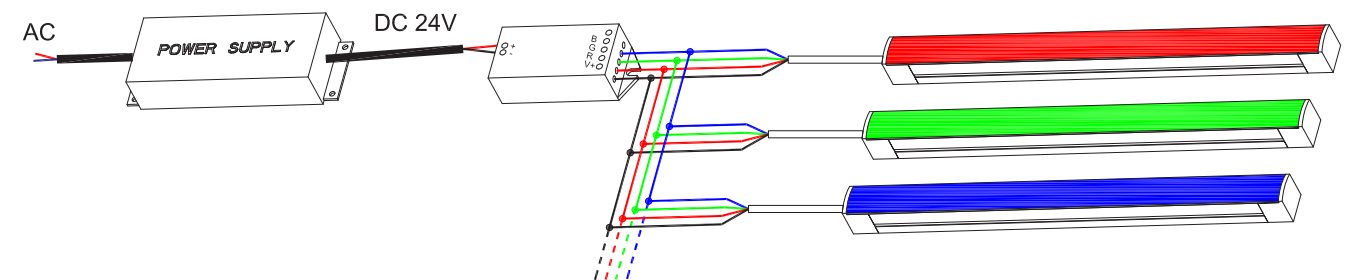
Bottom Cable Entry
It can achieve perfect seamless light connection if the cabling space is allowed from the bottom.

Eg: LNT RGB-03500-015-F: LINIO NEON 1615 TV RGB , 3.5M/ reel,15W/M,Front cable entry

Accessories

Art.#	Description	Picture	Art.#	Description	Picture
SC001	1m anodized aluminium channel for LINIO NEON 1615 TV		MF018	Male and female connectors, 30cm IP67, 4PIN	
BC001	Extension connectors, 1m IP67, 4PIN		MF019	Extension connectors, 1m IP67, 4PIN	
M0002	Clips 20mm 316L (Clip required every 25cm, stainless steel)		MF020	Extension connectors, 5m IP67, 4PIN	
E0002	End cap with 30cm cable 4PIN for LINIO NEON 1615 TV		XLG-150-24-A	PSU 24V/150W IP67, Non-dimmable, White, 100-305V supply	
E0003	Closed end cap for LINIO NEON 1615 TV		ELG-150-24B	PSU 24V/150W IP67, 3 in 1 dimming function, White, 100-305V supply	
G0002	Silicone glue		M6+M3-3A	RGB Controller, DC24V, 3A*3Channel, Max 9A IP20, Support remote control	

Wiring connection



Application



Where to use the product?

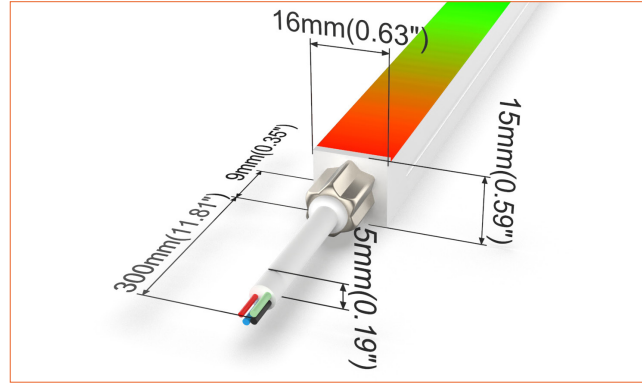
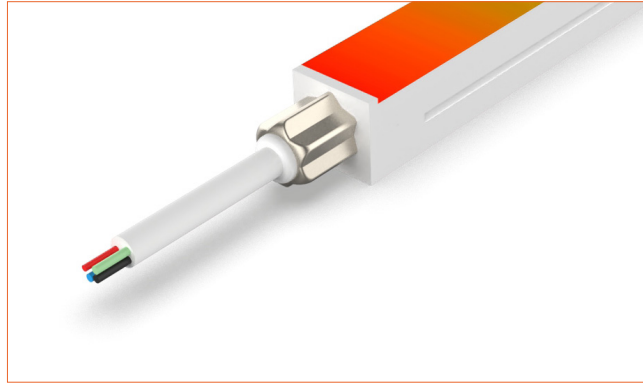
LINIO NEON 1615 TV RGB lets you open up a world of colors possibilities through red-green-blue color mixing, allowing for an endless number of possibilities. An extremely flexible, cuttable Neon flex, it provides with diffused light without visible spots, leaving you free to follow your light inspiration and create all kinds of shaped lighting with ease.

This is an awesome product for commercial, residential, architectural, and decorative purposes. You can use it in Restaurants, Airports, shopping malls, custom signage, handrails.....countless application places, open up your imaginations!!!

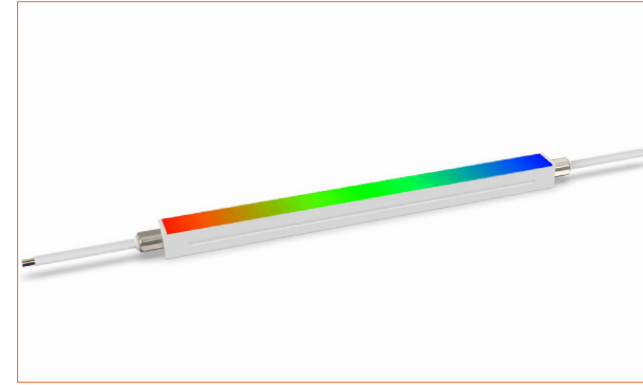
Beamever

Front Cable Entry

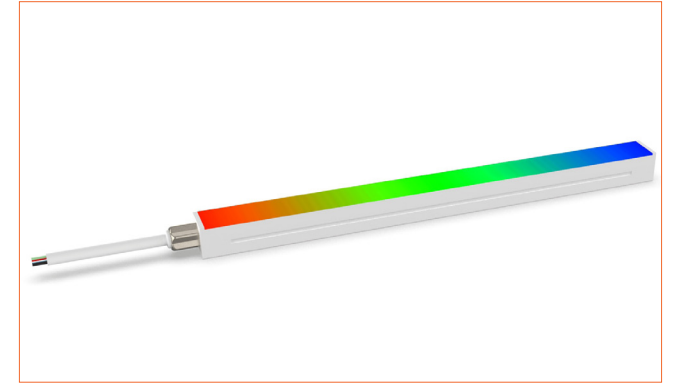
Suitable for power feed in or straight connection. Do not bend down or aside too sharp.



Front double wire end: 30cm cable from two ends, front cable entry.

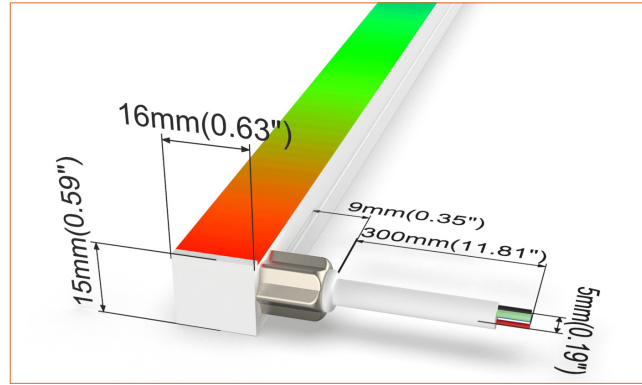
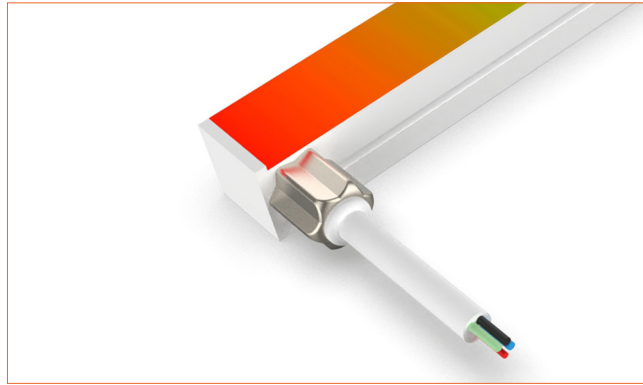


Front single wire end: 30cm cable from one end, front cable entry.

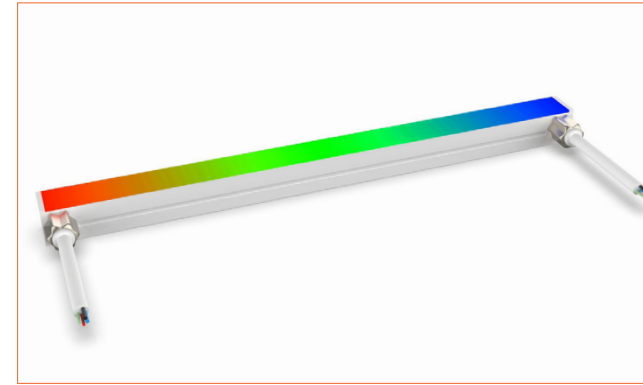


Side Cable Entry

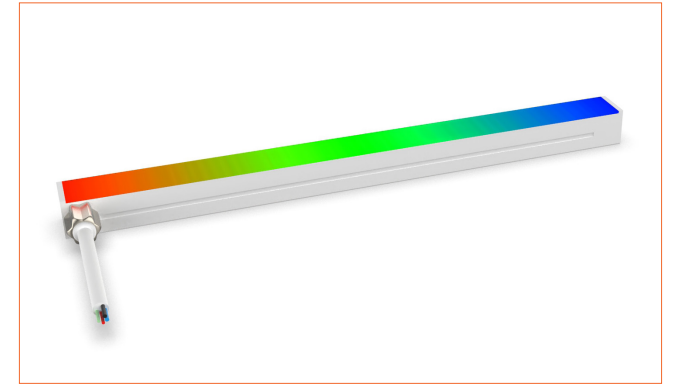
It can achieve perfect seamless light connection if the cabling space is allowed on the side.



Side double wire end: 30cm cable from two ends, side cable entry.

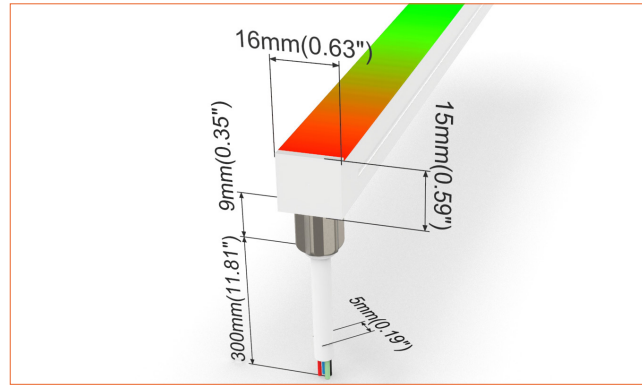
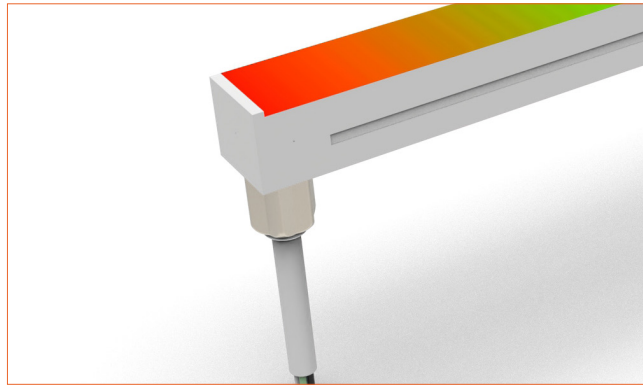


Side single wire end: 30cm cable from left one only (side cable entry), other end with closed end cap.

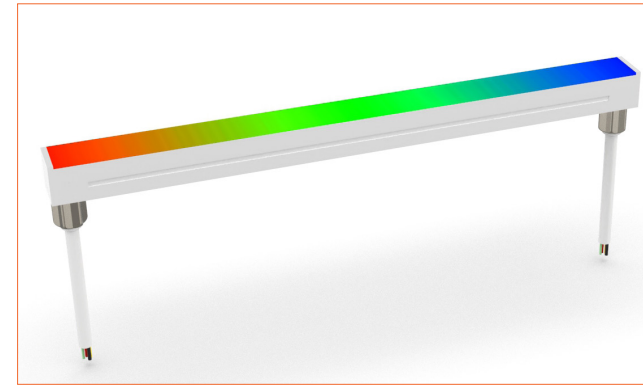


Bottom Cable Entry

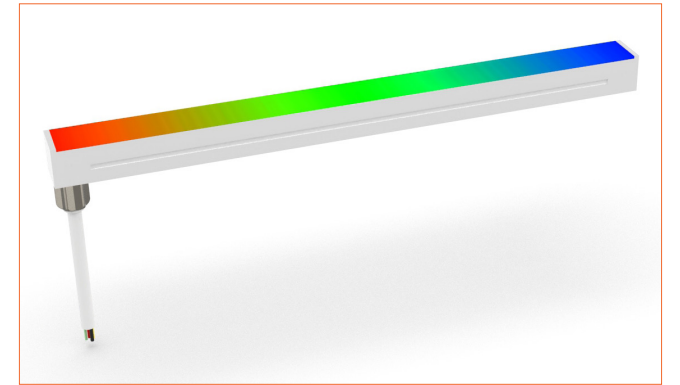
It can achieve perfect seamless light connection if the cabling space is allowed from the bottom.



Bottom double wire end: 30cm cable from two ends, bottom cable entry.

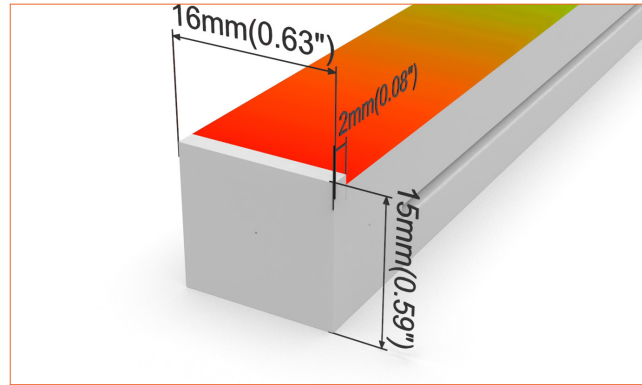
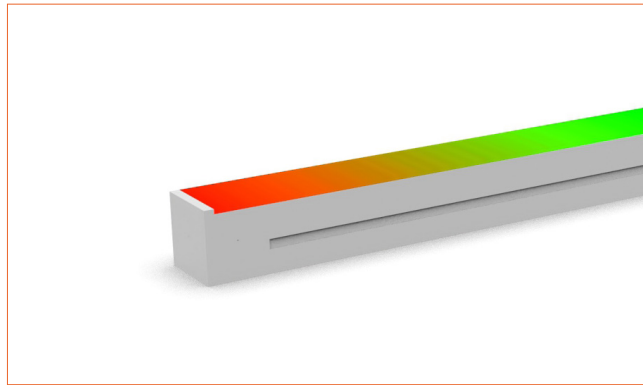


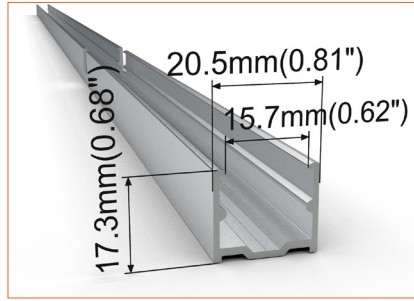
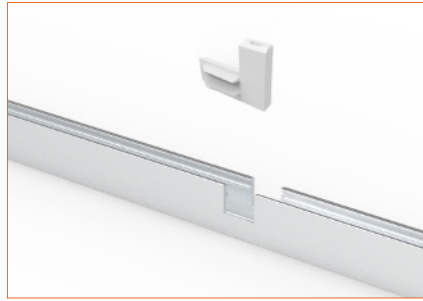
Bottom single wire end: 30cm cable from left one only (bottom cable entry), other end with closed end cap.



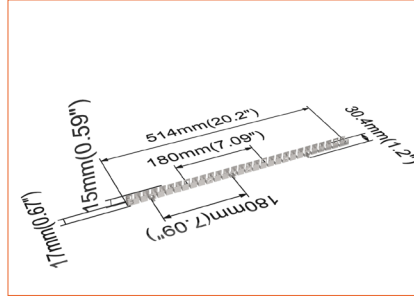
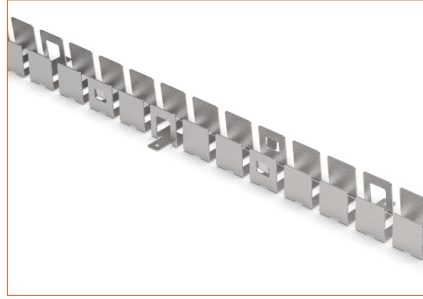
Closed end cap

Elegant injecting closed end cap in same size as neon flex body.

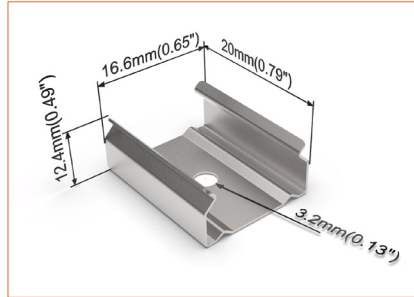
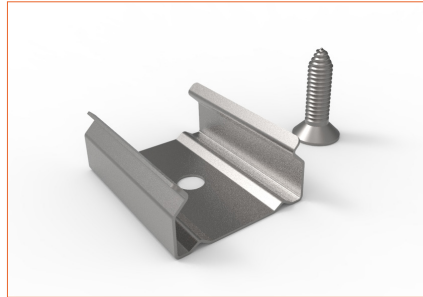




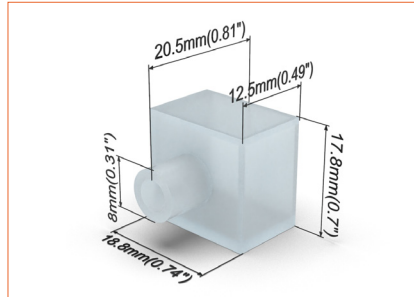
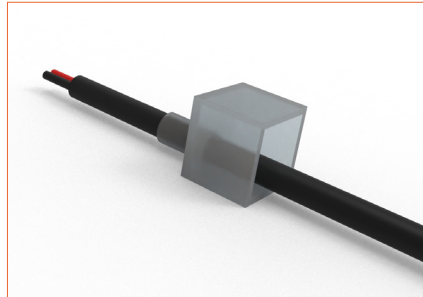
SC001
Straight aluminium channel
Length 1mtr



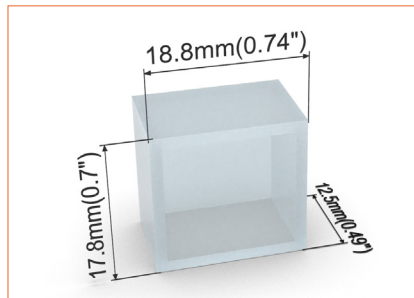
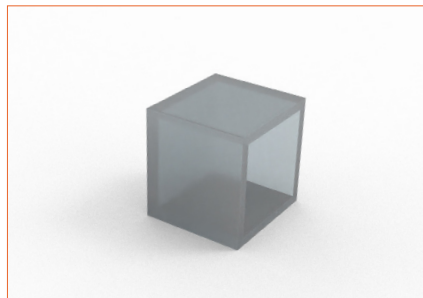
BC001
Bendable stainless steel channel
Length 0.5mtr



M0002
Stainless steel mounting clip



E0002
End cap with 30cm cable



E0003
Closed end cap

