

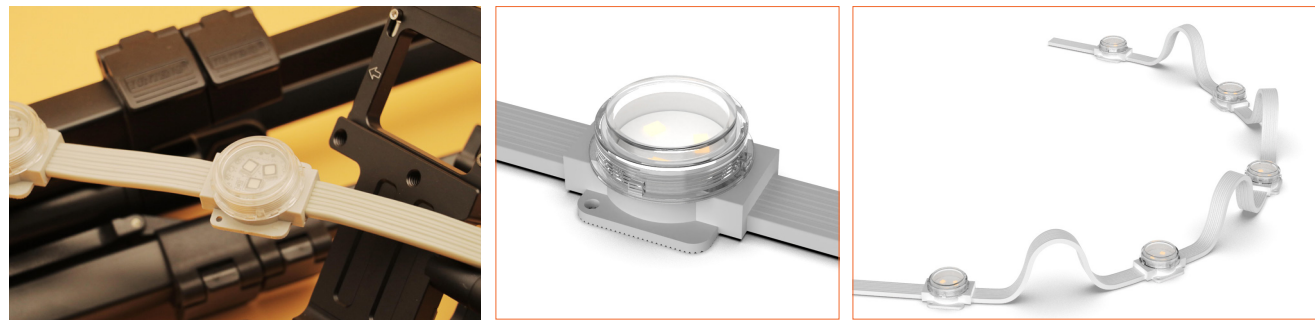
HELA FLEX WHT

IP67 waterproof protection
Perfectly work both inside and outside
ONE BIN ONLY of color-consistency
Provide the best illuminance 24/7

3 steps of color-tolerance



Beamever

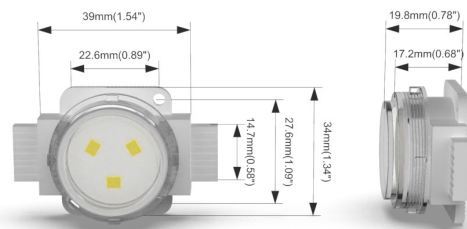


HELA FLEX WHT

- 39*29*18.8mm, WHT color range from 2700K to 6000K.
- 0.75W&12V as constant voltage.
- ON&OFF control system to manipulate the interaction of lights and devices.
- IP67 waterproof, anti-UV, dust-free, and anti-corrosion.
- Multiple and easy installation, e.g., punch & steady, or stainless wire.
- Work both external and internal projects.

Product Benefits:

- Provide the best illuminance for each of different projects.
- Extremely durable quality and excellent working-performance.
- Adjustable of open-wire length, or light color.



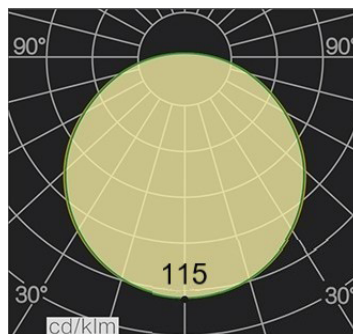
Electrical data

Voltage	DC24V (23.5V _{min} 24.5V _{max})
LED/Node	3
LED Type	LUMILDES 2835
SDCM	2
Ra	90
Lumen Efficiency	64
Beam Angle	94
Storage Temperature	-20°C / -4°F ~ 70°C / 158°F
Ambient Temperature	-35°C / -31°F ~ 55°C / 131°F
Waterproof Rate	IP67
Warranty	5years warranty

LM/Unit	0.75W
2700K	46
3000K	47
4000K	48
5000K	51
6000K	53
Max. Run Length (M)	10

Important notice

- The given data are typical values due to the tolerances of the production process and the electrical components, values for light output and electrical power can vary up to 10%.
- The given color temperature is finished product color temperature.
- Max run length refer to single side feed in serial connection based on 10 Nodes/m.



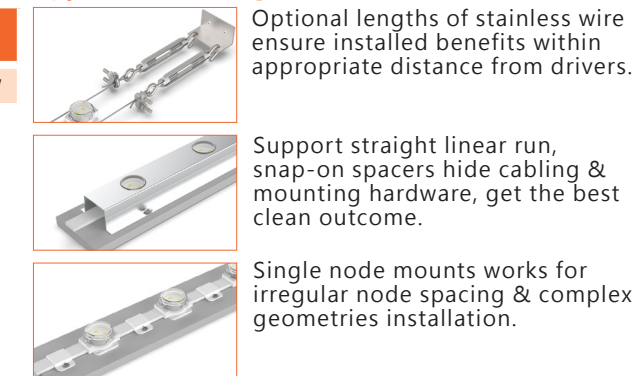
Order code

SERIES NAME	COLOR	NODE/M	LENGTH	POWER
HFW	27= 2700K	08=8Node/M	20000=20M	075=0.75W
	30= 3000K			
	40= 4000K			
	60=6000K			

Eg: HFW 27 - 08 - 20000 - 075: HELA FLEX WHT 2700K, 8 nodes/m, 20m, 0.75W/node.

Note: Length and node/m can be customized.

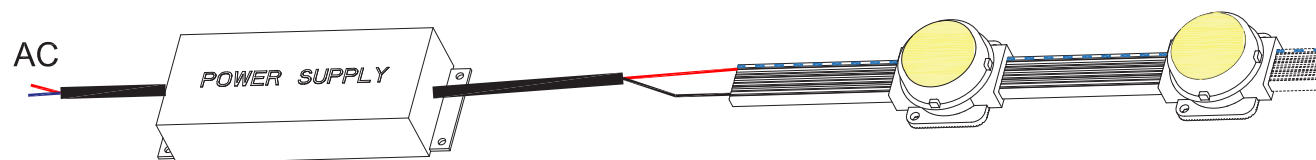
Typical mounting



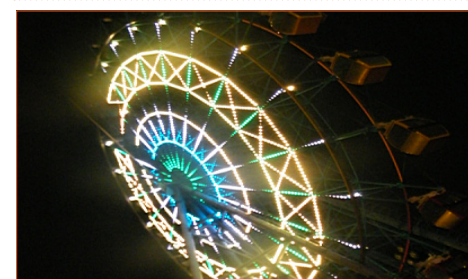
Accessories

Art.#	Description	Picture	Art.#	Description	Picture
SW001	Stainless steel wireφ2.0mm		MF031	Extension connectors, 50cm IP65	
SC009	Aluminium profile		XLG-150-24-A	PSU 24V/150W IP67, Non-dimmable, White, 100-305V supply	
M0010	Stainless steel mounting clip including screw		ELG-150-24B	PSU 24V/150W IP67, 3 in 1 dimming function, White, 100-305V supply	
MF029	Male and female connectors, 25cm IP65, 2PIN		ELG-150-24DA	PSU 24V/150W IP67, DALI control technology, White, 100-305V supply	
MF030	T shape male and female connector IP65, 2PIN (the cable length between M/F connectors is 50cm)				

Wiring connection



Application



Where to use the product?

HELA FLEX WHT apply the ON/OFF control system to manipulate the great interaction between lights and devices. IP67 waterproof level to permit HELA FLEX could do a very great job for both external and internal various places.

Being very flexible, e.g., adjustable for the distances between pixel to pixel; the light color; the installation way, such as applying the stainless-wire, or mounting clips. Bring with the outcome of homogeneous lighting effect, and extremely durability and be trustful during works. Perfectly present the combination of technological application & the attainment of lighting-art.

Beamever

Why our HELA FLEX WHT always the priority consideration?

HELA FLEX WHT can be used in many places in our life, for instance, as the IP67 waterproof level, it can be applied as the decoration lights for inside of the house, to present best WHT illuminance for anywhere of internal. Also the major of the using for the outside projects, such as be made as the HD screen where be sat in top of building, to display vivid images. Very easy installation and multiple options are available, for example, to apply the stainless wire to achieve the maximum seamless and flawless. Or to apply the mounting clips and punch approach to steady lights on specific areas. Each of the light comes out with very particular optical-consideration, it obtains the best bright and homogeneous illuminance. Be protected from overheating, water in-break, anti-UV, anti-corrosion, dust-free, and extremely durable material quality. Provide the customized services, such as you can decide the length of open-wire, the color of lights, the way of installation, or the lighting-distribution.



Application: tons of real projects could be referred to and they are as the strongest evidence to proof how perfect HELA FLEX WHT is. In 2013, pixels be used into a shopping mall, in He Fei, China. With 10 pixels per meter and 30000 pixels as total lights. In 2015, it be applying as a very impressive project for QingShan Lake Park, in Lin An, Hangzhou. 8 pixels per meter with total 10000 pixels as the lights consumption. And in 2011, applied 10 pixels per meter and total of 52620 pixels, for the five-stars hotel lighting project, in Gui An, Fuzhou. Each of the projects were really impressive, professional-level, and extremely durable of working performance. Highly of customers satisfactions, each of showcase as the famous lighting example, and BM became the very top three options when people considering light-selection.

Customized Service: BM always puts customers on the very priority of consideration. So, in order to meet various type of needs, expectations, or requirements, there are sort of options are available. For example, people can decide the light color, the approach of installation, the length of open-wire, or the lighting distribution. What' s more, every material, design idea, and lighting-everything are totally environment friendly. E.g., nontoxic, odorless, smells good, or recyclable.

Optical Designing: being so strategically to consider about the lighting design. Purpose on maintain the precise of lighting-consistency, increase the rate of luminous flux, or apply the principle of the light refraction to redistributed the side light and peripheral light. To greatly improves the original light distribution structure, reduces glare, and inevitably pollute to the ring. To achieve the close degree of the brightness of the far and near viewing angles, and optimize the light distribution and the actual viewing angle effect. Keep on ONE BIN ONLY which better to achieve the color-consistency; color tolerance within 2-3 steps; with no or less of the voltage drop.

What is the key point here?

BM always put customers the very priority of consideration. So, in order to meet various type of needs, expectations, or requirements, there are sort of options are available. For example, people can decide the light color, the approach of installation, the length of open-wire, or the lighting distribution. What' s more, frees you to plan any inspired design ideas, how many pixels you want to apply for the project, and lighting-everything are totally environment friendly. E.g., nontoxic, odorless, smells good, or recyclable. To achieve the cost-effective, and save your time as the goal.



Beamever

Address: 100 N Howard St Ste R,
Spokane, WA, 99201-0508 USA
Tel: 323-5104660
info@beamever.com
www.beamever.com