

# Beamever

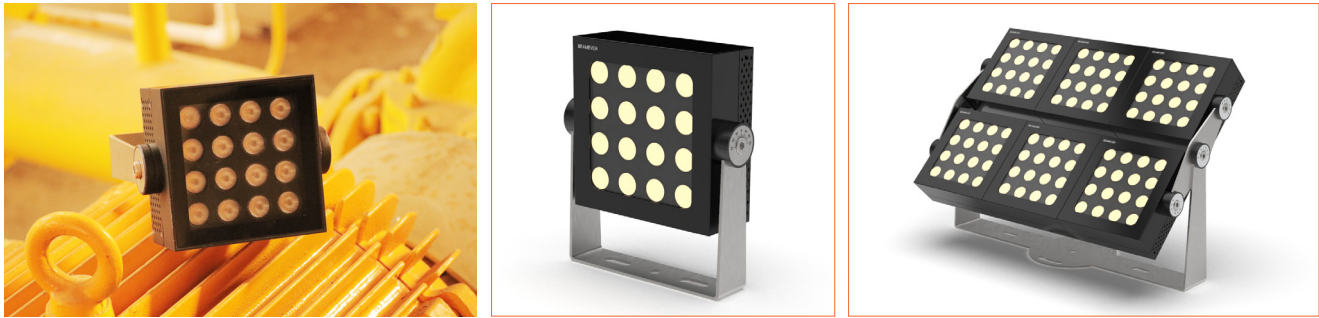
## SOLA WHT

ONE BIN ONLY principle  
Super durable and nice  
illuminance  
For both outdoor and indoor  
Multiple choice of modules

With unique designing  
appearance



Beamever

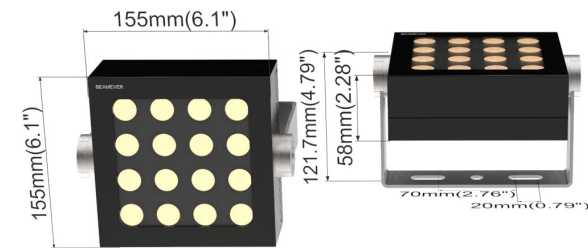


SOLA WHT

- 155\*155\*121.7mm, and 24W&24V constant voltage.
- ONE BIN ONLY to maintain the best color-consistency.
- WHT color range from 2700K-6500K color range options.
- IP67 waterproof, anti-UV, anti-corrosion, and dust-free.
- Easy installation of bottom-mount.
- Adjustable of lighting-angle, module selection, spray-color of light surface.

Product Benefits:

- Multifunctional &multiple-combination.
- Very durable and trustworthy quality.
- High-standard of protective-system.



Electrical data

Voltage	DC24V (23.5V <sub>min</sub> , 24.5V <sub>max</sub> )
LED/Unit	16
LED Type	OSRAM P7
SDCM	3
Ra	80
Lumen Efficiency	73.1@40° 3000K
Beam Angle	See below table
Storage Temperature	-20°C /-4°F~70°C /158°F
Ambient Temperature	-40°C /-40°F~50°C /122°F
Waterproof Rate	IP67
Warranty	5years warranty

LM/Unit	36W @60°	36W @40°	36W @30°	36W @20°	36W @12°
2700K	1766	2598	2799	2699	3196
3000K	1800	2641	2857	2752	3230
4000K	1834	2677	2895	2789	3284
5000K	1878	2700	2934	2830	3300
6000K	1903	2756	2967	2901	3364

UV-resistant

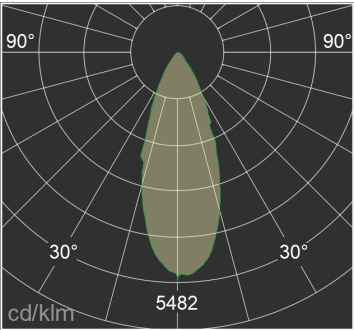
Waterproof IP65

Tailor-made

Solvent-resistant

Life span> 54000H

One Bin Only



Important notice

- The given data are typical values due to the tolerances of the production process and the electrical components, values for light output and electrical power can vary up to 10%.
- The given color temperature is finished product color temperature.



Order code

SERIES NAME	COLOR	POWER	DEGREE	MODULE
SW	27= 2700K	36=36W	60=60°	1=one module
	30= 3000K		40=40°	2=two modules
	40= 4000K		30=30°	3=three modules
	50=5000K		20=20°	4=four modules
	60=6000K		12=12°	6=six modules

Eg1: SW-27-24-30-1: SOLA WHT, 2700K, 36W/unit, 30° , single module.

Multiple modules

Multiple module-combinations available, for instance you only need two of them to apply in to project.

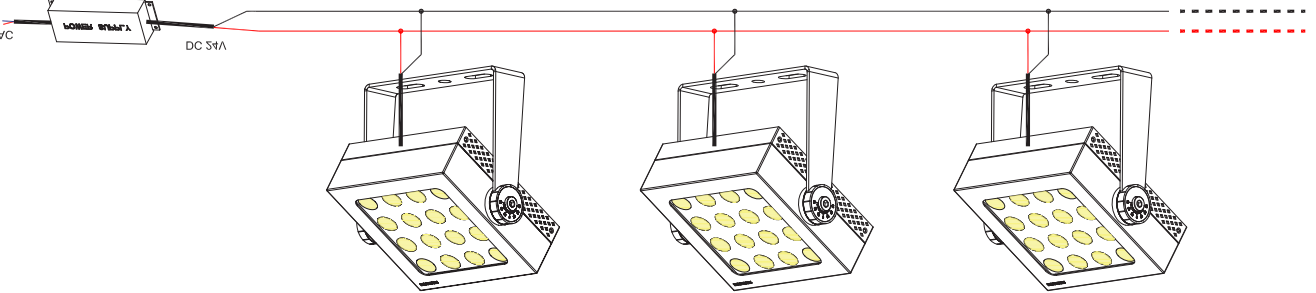
Flexible at module options, for instance, you need three of them for satisfying the project requirement.

Only take four of projector light for the project which is totally practical cause the flexibility of modules.

Accessories

Art.#	Description	Picture	Art.#	Description	Picture
HK001	Hex key		XLG-150-24-A	PSU 24V/150W IP67, Non-dimmable, White, 100-305V supply	
MF044	Male and female connectors, 25cm IP65, 2PIN		ELG-150-24B	PSU 24V/150W IP67, 3 in 1 dimming function, White, 100-305V supply	
MF045	T shape male and female connector IP65, 2PIN (the cable length between M/F connectos is 50cm)		ELG-150-24DA	PSU 24V/150W IP67, DALI control technology, White, 100-305V supply	
MF046	Extension connectors, 50cm IP65				

Wiring connection



Application



Where to use the product?

SOLA WHT with professional-level of lighting design, e.g., the multiple choices of light-distribution & the adjustment of light-angle which to ensure each of the light comes with precise direction and perfect illuminance.

Plus, apply with the super easy of installation, as the bottom-mounting approach. SOLA could work both outside and inside lighting environments. E.g., to give very strong lighting-support to the tennis court; or as the lighting decoration in people’ s backyard.



## Why our SOLA WHT always the priority consideration?

SOLA WHT with very exquisite & square-shape of the light-body designing. And match with IP67 waterproof level, to ensure it can work both outside or inside. E.g., places with narrow or wide spaces, or really need the WHT lighting-support. For example, to decorate the different shapes of building, bridges, artistic architectures, hotels, cultural parks, or for the tunnels. Very easy installation, to ensure the time-saving & cost-saving. Adjustable of light-angle to meet different needs, very specific and precise to require each of the light comes out with professional and extremely beautiful. Also the spray-color of light surface, and the length of open-wire could be decide by needs. Completely and always put customer as the first-consideration.



And as one of the most competitive advantage, SOLA WHT series of projector light has the multiple choices of modules include the combinations of single one, double, triple, four, or six light in the meanwhile. For example, the project will come up with different expectation or requirement, in order to achieve the goal. So, sometimes, for the light quantities must be control very specifically, because it relates with cost and timing-consume. Then, the adjustable modules could do tons of help when consider being customized projects. Because it allows you to

become more flexible and creative, e.g., to decorate a luxurious hotel. Apply two of SOLA WHT to highlight the elegance of artwork which be setting in the exhibition corridor of outside of guest rooms. And in the meanwhile to apply six or more to the surrounding of artificial fountain, in front of the central-gate of the hotel. To enhance the wealthy, leisure, and with full of the artistic atmosphere.

**Illuminance:** present very precise and exquisite of lighting outcome by each of them are considered as professional optical designing. And multiple selections of WHT color range, from 2700K to 6500K, more specific as the white temperature, e.g., cool white, natural white, warm, white, or other type of specific white to support the projects. Stay with 24/7 of perfect illuminance. ONE BIN ONLY to maintain the highly color-consistency as the top of professional lighting providing, always and forever seek the matchless beauty & eternal qualities. Also to strives towards producing the perfect of flawless lighting quality and effect. As the reminder, SOLA WHT series of projector light working temperature range from -40oC to +50oC, that perfectly could work day and night, never take break if needs. Operate by the simple but essential ON/OFF control system, to manipulate the interaction of light and devices.

**Protection :**the heating-dissipation system to prevent SOLA from being too overheat or overload, which to ensure the balance between lighting and core-consumption. Also to make it stays cooler during working. IP67 waterproof protect SOLA avoid from various of water vapor, or series of water. Anti-UV helps to retain the primary-color of light body.

**Multifunctional:**SOLA can be used as decoration, lighting-supporting, and safe-light providing functions. For instance, to decorate places with specific needs, such as to highlight the shape and atmosphere of a stone-arch bridge within the famous tourist spot. To obtain the feeling of cultural and relaxing. Or as the lighting-support that might need to provide very large of lighting-coverage to e.g., concert performance, stage lighting effect, or big outdoor soccer field. To give the feeling as daytime, even already turn to dark night. And last but not least, as the safe-light providing function, e.g., lighting for tunnels, or inside of public-transportation bridge, to provide the safe of lighting to those driving people a very clear and bright visual effect during the dim or dark-zone.

## What is the key point here?

As one of the most competitive advantages, projector lights series of projector lights has multiple choices of modules including the combinations of single one, double, triple, four, or six lights in the meanwhile. For example, the project will come up with different expectations or requirements, in order to achieve the goal. So, sometimes, the light quantities must be controlled very specifically, because it relates with cost and timing-consume. Then, the adjustable modules could do tons of help when considered being customized projects.

**Environmental Consideration:**each of the light be made by very 'green' and high-quality of material. With non-toxic, recyclable, and no smells. Totally contribute BM' s effort to our society to being healthy-growth of environment.

**Customized Options:**different module combinations available to meet various requirements of projects. The light surface of spray-color could decide by customers. And the light-angle is adjustable, to ensure each of the light come out with precise lighting consideration. And the length of open-wire is also flexible to choose. Always put customers as the priority of consideration.



# Beamever

Address: 100 N Howard St Ste R,  
Spokane, WA, 99201-0508 USA  
Tel: 323-5104660  
info@beamever.com  
www.beamever.com