

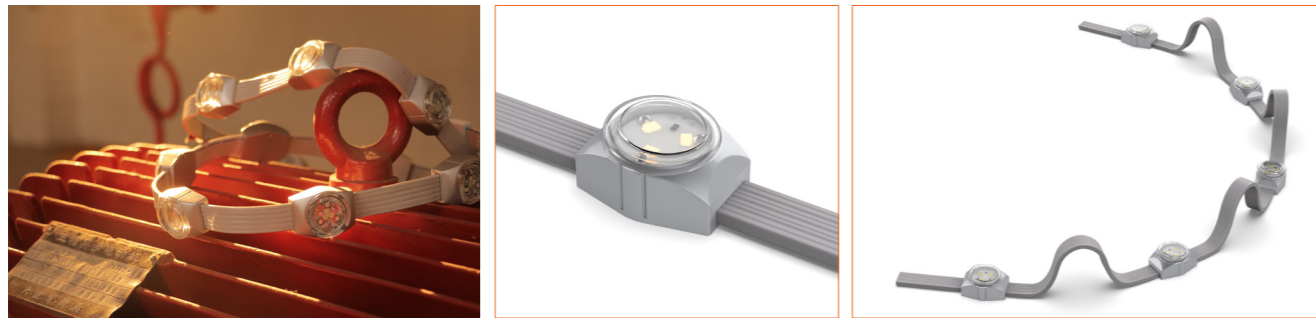
SUNO FLEX RGB

ONE BIN ONLY of color-consistency
2 steps of color-tolerance
For both external and internal
Provide the best illuminance 24/7

Innovation & Lighting Show-Cases



Beamever

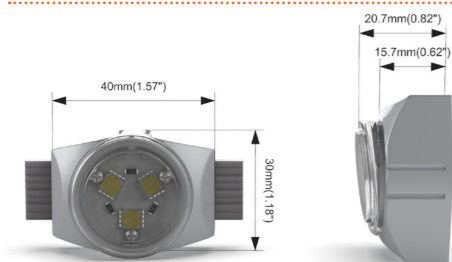


SUNO FLEX RGB

- Size with 38*14.8*21.5mm, and constant voltage of 0.75 W & 12 V
- ONE BIN ONLY for perfect color-consistency
- High-quality material with full of protections, e.g., waterproof, Anti-UV, durable
- DMX512 control system, unique lens design for better distribution of lighting
- Multiple choices of installation, light color, or length of open-wire
- Essential installation part includes mounting clips, stainless-wire

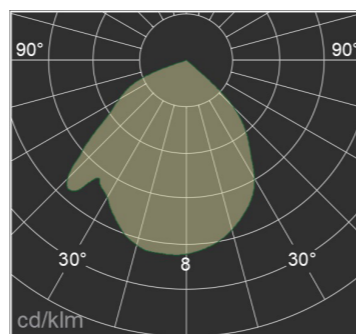
Product Benefits:

- With best performance of lighting showcase 24/7.
- Extremely high quality of material, e.g., durable, or dependable.
- Homogeneous & superb lighting effect.



Electrical data

Voltage	DC24V (23.5V _{min} ~24.5V _{max})
LED/Node	3
LED Type	CREE 3535 RGB
Lumen Efficiency	20
Beam Angle	91
Storage Temperature	-20°C / -4°F ~ 70°C / 158°F
Ambient Temperature	-35°C / -31°F ~ 55°C / 131°F
Waterproof Rate	IP67
Warranty	5years warranty



CCT	LM/Node	Max. Watt	Max. Run Length(M)
R	3	0.25	10
G	8.8	0.25	10
B	2.1	0.25	10
RGB	15	0.75	10

Important notice

- The given data are typical values due to the tolerances of the production process and the electrical components, values for light output and electrical power can vary up to 10%.
- The given color temperature is finished product color temperature.
- Max run length refer to single side feed in serial connection based on 10 Nodes/m.



Order code

SERIES NAME	COLOR	NODE/M	LENGTH	POWER
SFRGB	RGB	10=10Node/M	08000=8M	075=0.75W

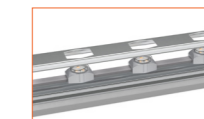
Typical mounting



Optional lengths of stainless wire ensure installed benefits within appropriate distance from drivers.



Support straight linear run, snap-on spacers hide cabling & mounting hardware, get the best clean outcome.



Single node mounts works for irregular node spacing & complex geometries installation.

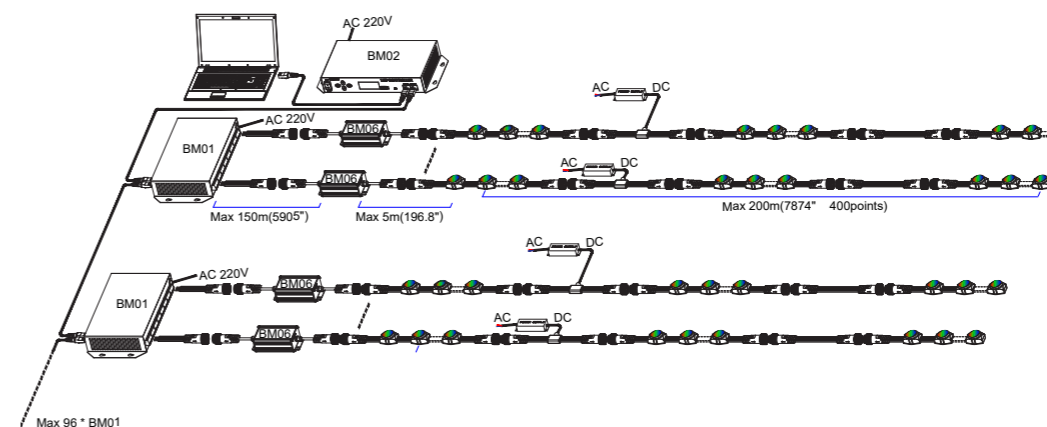
Eg: SFRGB - 10 - 08000 - 075: SUNO FLEX RGB, 10 nodes/m, 8m, 0.75W/node.

Note: Length and node/m can be customized.

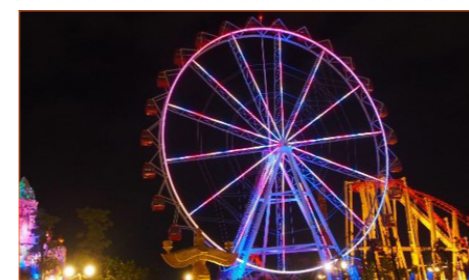
Accessories

Art.#	Description	Picture	Art.#	Description	Picture
SW001	Stainless steel wireφ2.0mm		MF034	Extension connectors, 50cm IP65	
SC010	Aluminium profile		CR001	DMX master controller IP54, 15W Max control 150000 pixels Input Voltage AC220V	
M0010	Stainless steel mounting clip including screw		CR002	DMX slave controller IP54, 15W 8 pcs Ports with DMX512 Signals Each port max control 400 pixels Input Voltage 220V	
MF032	Male and female connectors, 25cm IP65		CR003	DMX512 signal amplifier IP65 Max extend 400 pixels Each line in physical value	
MF033	T shape male and female connector IP65 (the cable length between M/F connectors is 50cm)		XLG-150-24-A	PSU 24V/150W IP67, Non-dimmable, White, 100-305V supply	

Wiring connection



Application



Where to use the product?

SUNO FLEX RGB is a very multiple and flexible type of light . It is suitable for either regular or irregular the building outline, large-scale stage background displaying-screen, advertising HD screen of downtown building, and wall displaying of entertainment places.

Unique power adjustment technology, higher brightness of primary color, smooth in the color change, high reliability of the circuit, and with the overheat temperature protection device. Very simple installation.

Beamever

Why our SUNO FLEX RGB always the priority consideration?

This kind of products have moderate size of 38*14.8*21.5MM, very strong versatility, atmospheric appearance, and excellent of performance. Be used for various regular or irregular outline delineation, large advertising screen, outdoor landscape lighting source. It can realize dimming, RGB, video playback, and the ambient temperature is - 35 °C to 55 °C . Built in electronic drive, with over temperature overload protection. From far to near the light effect and brightness consistency is very high, color changes delicate, clear, and smooth. Tons of real projects are referring to indicate the series of pixels are super powerful and popular for those big, famous, and extremely impressive lighting-projects.

For instance, in 2009, pixel was applied for the biggest and NO.1 dairy company in China, for their headquarter building, as the HD screen displaying. 16 pixels per meter with total 279040 pixels as the lighting consumption. DMX512 control system, and brought very impressive illuminance. In 2011, the pixel be used for Moscow Telegraph Building, 10 pixels per meter, and 53000 pixels in total. And in 2013, projected in Gui An, Fuzhou, The Ferris Wheel of a theme park. 8 pixels per meter, and 12000 pixels in total. Each of the projects was making the extraordinary success. People just love it, and really enjoy the impressive lighting work.and popular for those big, famous, and extremely impressive lighting-projects.



Customized Service: BM always puts customers on the very priority of consideration. So, in order to meet various type of needs, expectations, or requirements, there are sort of options are available. For example, people can decide the light color, the approach of installation, the length of open-wire, or the lighting distribution. What's more, every material, design idea, and lighting-everything are totally environment friendly. E.g., nontoxic, odorless, smells good, or recyclable.

Optical Designing:strategically to consider about the lighting design. Purpose on maintain the precise of lighting-consistency, increase the rate of luminous flux, or apply the principle of the light refraction to redistributed the side light and peripheral light. To greatly improves the original light distribution structure, reduces glare, and inevitably pollute to the ring. To achieve the close degree of the brightness of the far and near viewing angles, and optimize the light distribution and the actual viewing angle effect. keep on ONE BIN ONLY which better to achieve the color-consistency; color tolerance within 2 steps; with no or less of the voltage drop.

Protection:IP67 waterproof for preventing any water-series of in-breaking, such as fog, rain, vapour, or other type of water. Anti-UV to maintain the primary-color of light-body. Anti-corrosion to prevent the most type of chemical corrosion. Dust-free stays the pixel with very smooth, and self-clearing function, which could stays the clear and beautiful all the time. Extremely durable and dependable quality, to stay longer lifespan, and provide the great illuminance 24/7.

What is the key point here?

BM always put customers the very priority of consideration. So, in order to meet various type of needs, expectations, or requirements, there are sort of options are available. For example, people can decide the light color, the approach of installation, the length of open-wire, or the lighting distribution. What' s more, frees you to plan any inspired design ideas, how many pixels you want to apply for the project, and lighting-everything are totally environment friendly. E.g., nontoxic, odorless, smells good, or recyclable. To achieve the cost-effective, and save your time as the goal.

Technology: each pixel contains high-tech of electronic-device inside, also it works very well with control system. For example, to pre-programing the light style, such as design what kind of sentences, pictures, or videos will be play later on. Being precisely of deep-thinker about the lighting control or angle management. For instance, to make the best useful angle design for the len's top cover, which could help the light be distributed in more scientific and always maintain people's attention either stay in far or nearby the building.

Environment:not only for the business, but also, importantly to consider as a long-term development. BM shows their positive attitude and practical-action for join the 'green-group' . For instance, to choose those material with nontoxic, good smells, recyclable, and pollution-free. Decrease the light-pollution and the feeling of dazzle by really careful about the lighting design and angle-adjustment. For more specific, to make the precise change of lens top-cover, or in order to make the best lighting distribution channel.



Beamever

Address: 100 N Howard St Ste R,
Spokane, WA, 99201-0508 USA
Tel: 323-5104660
info@beamever.com
www.beamever.com