

PIXEL  
Family Guide  
2700K-6000K

ONE BIN ONLY  
IP67  
WHT, RGB, RGBW

**Beamever**

Project Solution  
Primary Choice

*Achievement  
Homogeneous  
Performance  
DMX512  
Design*



# Pixel light

Architectural lighting



## Introduction

-Pixel Light	03
-Why Pixels Light always be the priority of consideration?	04
-Pixels Light family	06
-Core-Value	09
-What makes Pixels Light so professional-grade of lighting?	10
-Specification and Information	12

# Pixel Light

Modern architecture can not only be illuminated with a custom light solution but also be displayed in an attractive way...



Pixels series of products could always meet your satisfactions for any of your lighting projects, such the do the lighting-refining in the downtown buildings where locates commercial streets, brilliant lighting for business exhibition halls, a very luxurious star-level hotel decoration, or the lighting-art for scenic bridge lighting. Every perfect fishing-end of each project is attributed to the positive & passionate attitude of Beamever, the forever pursuit of exquisite designing, the best top of materials for building with light body, customize services providing and the application of high-tech. One of our eternal seeking is keeping the color in consistency, no matter from which angle or which distance, and always stays with people's visual comfortable-zone. Being extremely unique, charming, and stylish at night. BeamEver has such good reputation and be famous in the LED market around the world for many years, and has received the support and pursuit of various famous companies. Such as Shangri-La Hotel, Wanda Plaza, luxury hotels in the Middle East, lighting-project in Indonesia, various cultural squares and theme park projects. Those cumulative experiences and

professional attitude makes BeamEver becomes so invincible and famous.

In order to satisfy the whole market, we have promoted & applied various advanced technologies, the quality of the light body, more contemporary of the lighting design, and the upgrading of various hardware and software, so that each of our light body products are so irreplaceable and exquisite. For example, in a building, where the design and practical application of lighting are very challenging, because tons of requirement and expectations, e.g., it may require the maximum of being line less, or the shape of the building is very three-dimensional and irregular. At this time, it is a great opportunity to test the application of technology, the effect of science, and the perfect combination of lighting. in order to reflect the professional lighting. There are higher requirements for materials, such as not only simply of anti-UV, waterproof, weather protection, but also need to pay more attention to the long-term development, such as resistance to various common chemical corrosion, seawater erosion, altitude reaction, or other more important protection effect. For more specific requirements, such as the color range for both white and colors. For instance, the white category has sort of list of items, such as the natural white, warm white, coolest white, essential white, intelligent white, and solid white. The color category includes such as green, blue, red, yellow, or other types of color choices. Beamever could always provide the best range of colors with specific your requirements. Very focus and be high-standard for each of the projects, no matter in business exhibition, hotels, traveling spots, giant HD screen in the downtown building, etc.



Why Pixels Light always be the priority of consideration?

There are many of reasons that explaining why PIXELS is so popular around the world. For example, the professional attitude, unique lighting-design, technological application, with a lot of successful lighting-project experiences, and the quality of materials, e.g., the light body.

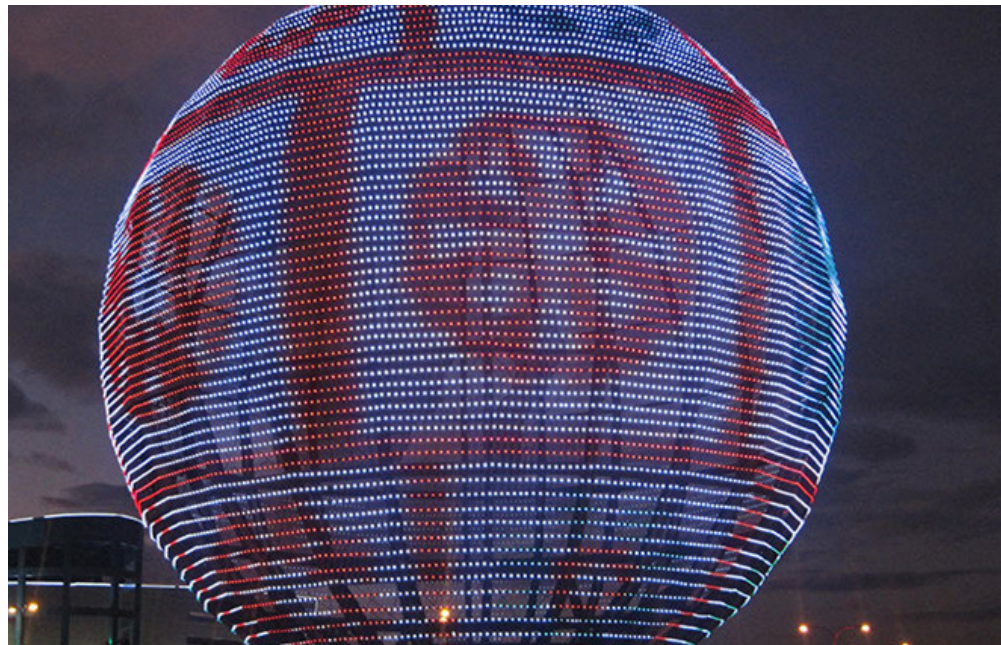
Lighting-Angle Design

Unique optical design from far to near the brightness observed by human eyes is very high consistent, greatly reducing glare and light pollution. The useless edge light on both sides of the light body can be divided into more useful and beautiful light by refraction. The color change is homogeneous, smooth and high-definition:Being so strategically to consider about the lighting design. Purpose on maintain the precise lighting-consistency, increase the rate of luminous flux, or apply the principle of the light refraction to redistribute the side light and peripheral

light. To greatly improve the original light distribution structure reduces glare, and, inevitably, pollution to the ring. To achieve the close degree of the brightness of the far and near viewing angles, and optimize the light distribution and the actual viewing angle effect, keep on ONE BIN ONLY which better to achieve the color-consistence color tolerance within 2-3 steps with no or less of the voltage drop.

Customized Service

Beamever always put customers on the very priority of consideration. So, in order to meet various types of needs, expectations, or requirements, there are sort of options are available. For example, people can decide the light color, the approach of installation, the length of open-wire, or the lighting distribution. What' s more, every material, design idea, and lightingeverything are totally environment-friendly.



Protection

IP67 waterproof for preventing any water-series of in-breaking, such as fog, rain, vapour, or other type of water. Anti-UV to maintain the primary-color of light-body. Anti-corrosion to prevent the most type of chemical corrosion. Dust-free stays the pixel with very smooth, and self-clearing function, which could stays the clear and beautiful all the time. Extremely durable and dependable quality, to stay longer lifespan, and provide the great illuminance 24/7.

Technology

Each pixel contains high-tech electronic-devices inside, and also it works very well with control systems. For example, to pre-programing the light style, such as design specific sentences, pictures, or videos will be play later on. Being precisely of deep-thinker about the lighting control or angle management. For instance, to make the best useful angle design for the lens' s top cover, which could help the light be distributed in more scientific and always maintain peoples attention, either stay in far or nearby the building.



Environment

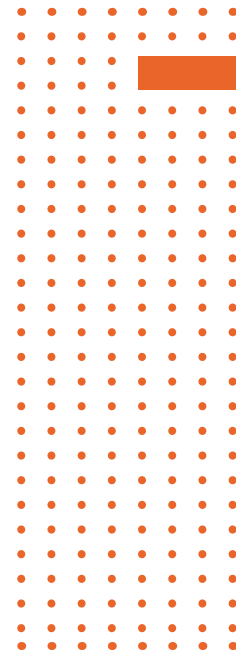
Not only for the business, but also, importantly to consider the long-term development. BM shows their positive attitude and practical-action for join the 'green-group' . For instance, to choose those material with nontoxic, good smells, recyclable, and pollution-free. Decrease the light-pollution and the feeling of dazzle by really careful about the lighting design and angle-adjustment. For more specific, to make the precise change of lens top-cover, in order to make the best lighting distribution channel.

Installation

Multiple choices of installation, for instance, to apply the mounting clips, and punch the hole into the light-container of aluminium profile, then steady lights with clips, and put the finished-goods into the right place of building. Or apply the stainless-wire to make the best of being seamless, which could retain the best consistency of lighting, and not get side effect when there are very long length of lights. Also it could do the best working for fitting either irregular or shaped places. E.g., curved shape of lighting requirement, or other different & unusual shapes.

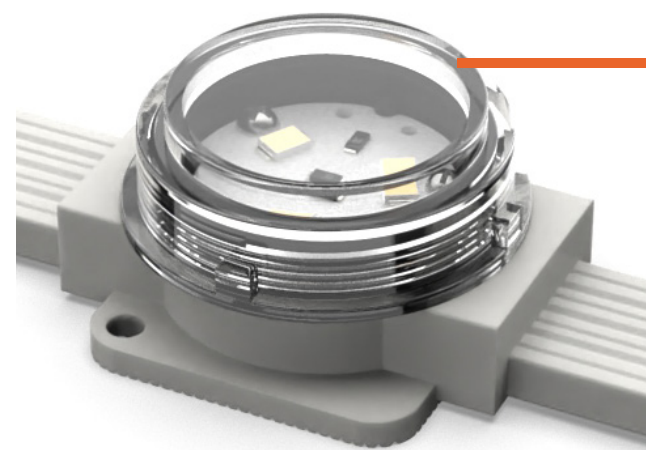


# Pixels light family



## So, how about to talk more with the best part of Pixels?

As one of the most significant and useful LED lighting products, pixels continuously promotes the best lighting technology, light body production & material, skilled operation of control system, scientific lighting design, and more and more simple operation, such as installation of light body, operation of control system, or special customization of various projects and services that only belong to you. More and more flexible, easy to use, durable, simple.



## HELA FLEX WHT

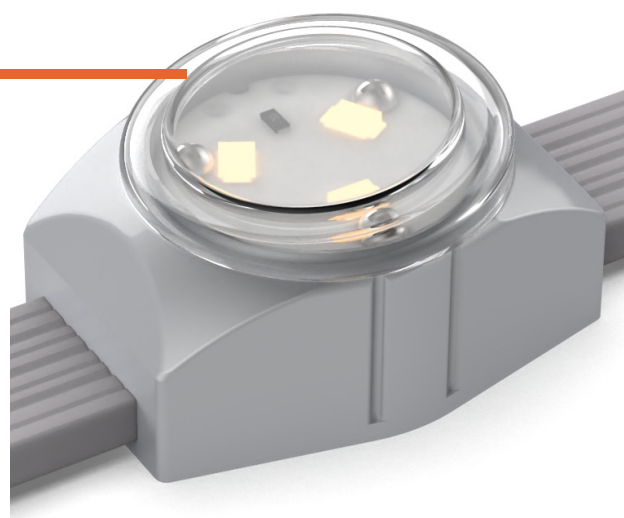
### Professional-Grade of Lighting Level with Best Illuminance

HELA FLEX WHT is a type of pixel with small size of 39\*29\*18.8mm, very light weight which can be arbitrary bending and deformation. Extremely versatile, and IP67 waterproof, which perfectly ensure it can work outside and inside lighting projects. E.g., decoration for highlight irregular-shape of building, to beautify the bridge, to display vivid images in HD screen, or to create the luxury and commercial atmosphere in the fancy-car exhibition. ONE BIN ONLY to maintain high color-consistent, and within 3 steps of color-tolerance.

## SUNO FLEX WHT

### As a Technological and Extremely Exquisite of Lighting Provider

SUNO FLEX WHT provide the white color range from 2700K to 6000K, with IP67 waterproof, and ONE BIN ONLY of color-consistency. Professional-standard of lighting provider, for both external and internal light showcase. For example, as the decorative function for a super-skyscraper, makes it becomes the most eye-catching landmark in the city. Or as simple and beautiful WHT light in people's house to refine the internal space. Very easy installation, super durable working performance, and apply the ON&OFF control system.



## SUNO FLEX RGB

### INNOVATION & LIGHTING-SHOWCASE

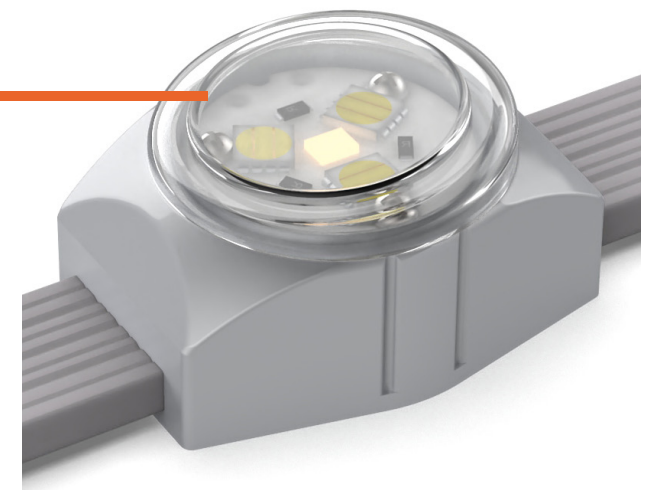
SUNO FLEX RGB with DMX512 control system, perfectly present the best lighting-performance during different lighting showcases. Each of the pixel size of 38\*14.8\*21.5mm, ONE BIN ONLY to keep the best color-consistency, and maintain 2 steps of color-tolerance. Suitable for different types of projects, such as decorating Shangri-La Hotel, which helps to make the atmosphere relaxing and comfortable. Or, as the essential component part of advertising HD screen presents homogeneous lighting-effect 24/7.



## SUNO FLEX RGBW

### Simple and Practical Bright-Solution

SUNO FLEX RGBW as size of 38\*14.8\*21.5mm, ONE BIN ONLY of color-consistency, and within 2 steps of color-tolerance. As the best combination of color light (e.g., blue, red, green, yellow, etc.) and WHT (options from 2700 K to 6500K) light. Be applied the DMX512 control system, and works for both indoor and outdoor, anywhere such as hotel, shopping mall, center building, or entertainment places. Various purposes such as to decorate the environment, to create the atmosphere, or to shape & highlight the building over the night.



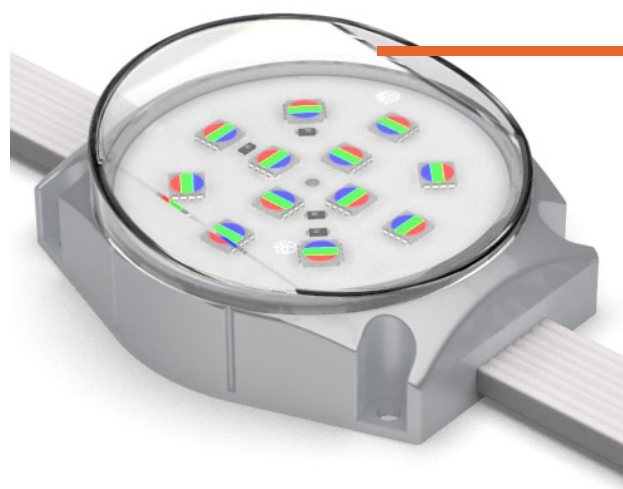
## URBO FLEX WHT

### Professional & Passionate to Provide the Best Lighting-Solution

URBO FLEX WHT is a very great & useful LED product which with the features of non-sticky, easy-installation and stays clean of the surface, no chemical reaction with detergent. Could perfectly work with different shape and locations building, such as big-size building, popular spots of shopping mall, or downtown center building. And URBO FLEX WHT could be very flexible & customized, such as the distance between pixel and pixel, light color, cable, length of open-wire, or connectors. Modern architecture can not only be illuminated with a custom light solution but also be displayed in an attractive way.







## URBO FLEX RGB

### With Advanced Technology and Amazing Idea of Light-Structure

URBO FLEX RGB with 70\*60\*26mm size for each of pixel, 3W & 24V as constant voltage, and ONE BIN ONLY character to retain the highly color consistency. Perfectly work with DMX512 control system to make the better operation of lighting and devices. And could use in anywhere in the city, e.g., to make the best luxury feeling in hotel, to highlight the shape of building, or to refine the night-view of lighting for the theme water-world park. A lot of place and reason for needing this type of product.

## URBO FLEX RGBW

### Amazing Pixels Creating The Superb Lighting Outcome

URBO FLEX RGBW as one of the most exquisite and high-quality pixels, which could be applied in many ways and places. Extremely flexible and durable, e.g., each pixel could be combined by many ways, or different purposes. The more pixels with closer distance could bring with better lighting effect. Very easily install and set-up with different installation measures such as punch and clips, stainless-wire, or copper-wire, etc. To fit with and refining the beautiful atmosphere for both inside and outside of buildings. And ONE BIN ONLY to make sure the consistency of color, and always stay with your visual comfortable-zone.



## Core-Value

The spirit of advancing, with the times, constantly innovating and always climbing the peak is Beamever seeks and professional dedication forever. No matter what kind of project, people will be impressed by Beamever's wisdom & professional. The application of technology and the unique design of the light body could be one of best & highlight competitive advantage of Beamever.

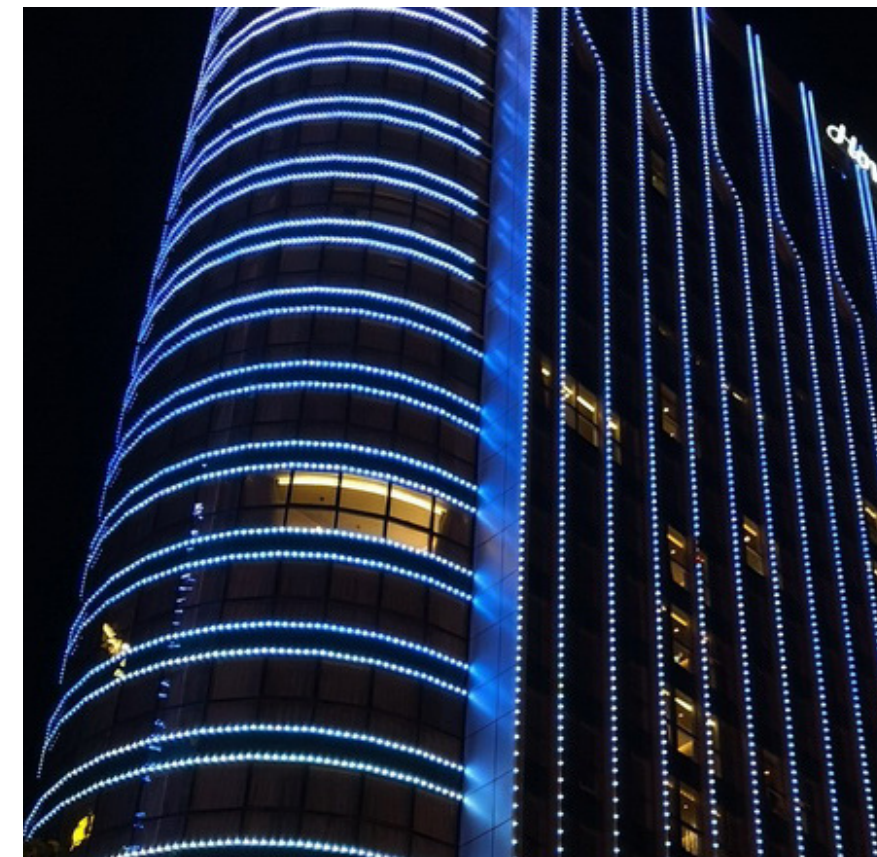
### Practical Application

The family of pixel is a very scientific and technological controllable lighting product, which from near to far retain the highly color consistency. With exquisite design as luminaire appearance, the material is very durable and dependable such as UV resistance, chemical corrosion resistance, waterproof, and strong adaptability to different climate changes. DMX512 control system is used to transmit the signal of lights, which perfectly combines the use of science and technology with the design of lighting. In all kinds of buildings, advertising screens, TV walls, amusement park lighting atmosphere, video, or motion pictures pictures can be broadcast freely. Very easy to load, very beautiful light and color. Modern architecture can not only be illuminated with a custom light solution, but can also be displayed in an attractive way.

For instance, in 2009, pixels will be applied for the biggest and NO.1 dairy company in China for their headquarters building as the HD screen, displaying 16 pixels per meter, with total 279040 pixels as the lighting consumption. DMX512 control system, and brought very impressive illuminance. In 2011, the pixel will be used for Moscow Telegraph Building—10 pixels per meter, and 53000 pixels in total. And in 2013, projected in Gui An, Fuzhou, The Ferris Wheel of a theme park, 8 pixels per meter, and 12000 pixels in total. Each of the projects was making extraordinary success. People just love it, and really enjoy the impressive lighting work.

### Customized Service

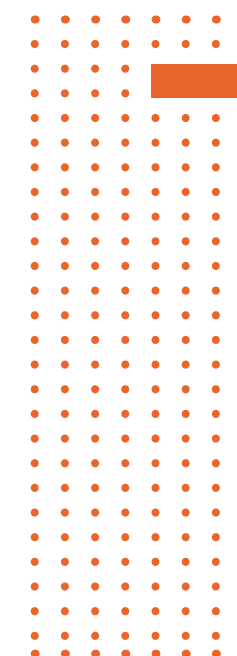
Beamever always put customers on the very priority of consideration. So in order to meet various type of needs, expectations, or requirements,



there are sort of options are available. For example, people can decide the light color, the approach of installation, the length of open-wire, or the lighting distribution. What's more, every material, design idea, and lighting everything are totally environment-friendly. E.g., non toxic, odorless, smell good, or recyclable.

### Customized Service

Being so strategically to consider about the lighting design. Purpose on maintaining the precise lighting-consistency, increase the rate of luminous flux, or apply the principle of the light refraction to redistributed the side light and peripheral light. To greatly improve the original light distribution structure reduces glare, and inevitably pollution to the ring. To achieve the close degree of the brightness of the far and near viewing angles, and optimize the light distribution and the actual viewing angle effect, keep on ONE BIN ONLY, which better to achieve the color-consistency; color tolerance within 2 steps with no or less of the voltage drop.





# What Makes Pixel So Professional-grade of Lighting?

## Protection:

IP67 waterproof for preventing any water-series of in-breaking, such as fog, rain, vapor, or other type of water. Anti-UV to maintain the primary-color of light-body. Anti-corrosion to prevent the most type of chemical corrosion. Dust-free stays the pixel with very smooth, and self-clearing function, which could stay clear and beautiful all the time. Extremely durable and dependable quality to stay longer lifespan, and provide the great illuminance 24/7.

## Environment:

Not only for the business, but also, importantly, to consider the longterm development. BM shows their positive attitude and practicalaction for join the 'green-group' . For instance, to choose those material with nontoxic good smells, recyclable, and pollution-free. Decrease the light-pollution and the feeling of dazzle by really careful about the lighting design and angle-adjustment. For more specifics to make the precise change of lens top-cover in order to make the best lighting distribution channel.

## Customized:

Beamever always put customers at the very priority of consideration. So in order to meet various types of needs, expectations, or requirements, there are sort of options available. For example, people can decide the light color, the approach of installation, the length of open-wire, or the lighting distribution. What' s more, every material, design idea, and lighting-everything are totally environment-friendly. E.g.. non-toxic, odorless, or recyclable.

## Advantages:

This kind of products have moderate size, very strong versatility, atmospheric appearance, and excellent performance. Be used for various regular or irregular outline delineation, large advertising screens, outdoor landscape lighting source. It can realize dimming, RGB, video playback, and the ambient temperature is - 35 °C to 55 °C . Built-in electronic drive with over-temperature overload protection. From far to near, the light effect and brightness consistency is very high, color changes are delicate, clear, and smooth. Tons of real projects to be referred to indicate the series of pixels are super powerful and popular for those big, famous, and extremely impressive lighting-projects.

## Optical Designing:

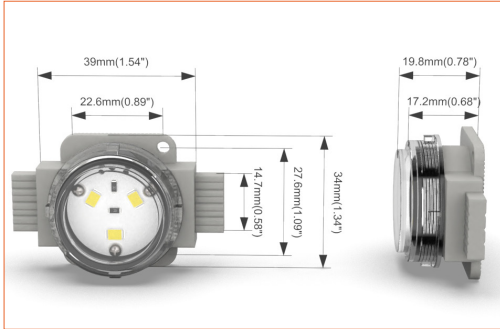
Being so strategically to consider about the lighting design. Purpose on maintain the precise lighting-consistency, increase the rate of luminous flux, or apply the principle of light refraction to redistributed the side light and peripheral light. To greatly improve, the original light distribution structure reduces glare, and, inevitably, pollution to the ring. To achieve the close degree of the brightness of the far and near viewing angles, and optimize the light distribution and the actual viewing angle effect. Keep on ONE BIN ONLY, which is better to achieve color-consistence color tolerance within 2-3 steps with no or less of the voltage drop.

## Technology:

Each pixel contains a high-tech electronic device inside, also, it works very well with the control system. For example, pre-programming the light style, such as design, sentences, pictures, or videos, will be played later on. Being precisely of deep-thinker about the lighting control or angle management. For instance, to make the best useful angle design for the lens' stop cover, which could help the light be distributed in more scientific and always maintain people' s attention either stay in far or nearby the building.

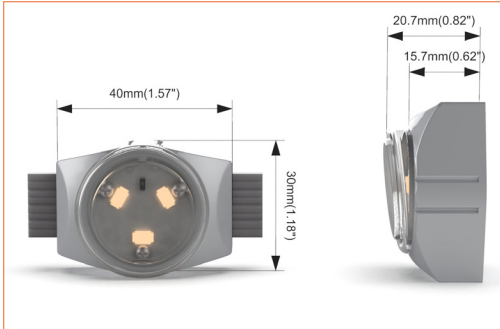


SPECIFICATIONS AND INFORMATION



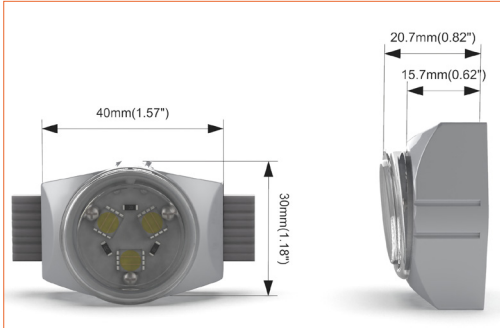
HELA FLEX WHT

Voltage	DC24V (23.5V <sub>min</sub> 24.5V <sub>max</sub> )
Wattage (W/node)	0.75
Lumen Efficiency ( LM/W)	61.3 to 70.67
Lumen (LM/node)	46 to 53
Beam Angle	94°
CCT	2700K/3000K/4000K/5000K/6000K
Waterproof Rate	IP67
Ambient Temperature	-35°C -31°F~55°C /131°F



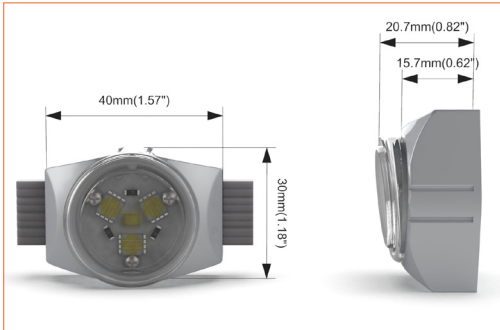
SUNO FLEX WHT

Voltage	DC24V (23.5V <sub>min</sub> 24.5V <sub>max</sub> )
Wattage (W/node)	0.75
Lumen Efficiency ( LM/W)	53.3 to 57.3
Lumen (LM/node)	40 to 43
Beam Angle	78°
CCT	2700K/3000K/4000K/5000K/6000K
Waterproof Rate	IP67
Ambient Temperature	-35°C /-31°F~55°C /131°F



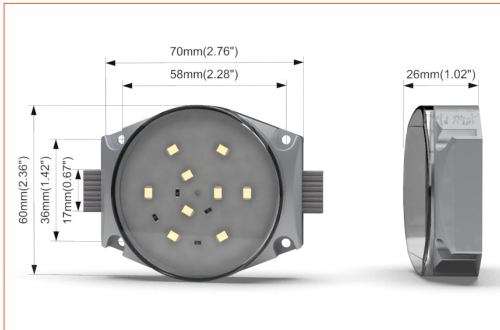
SUNO FLEX RGB

Voltage	DC24V (23.5V <sub>min</sub> 24.5V <sub>max</sub> )
Wattage (W/node)	0.75
Lumen Efficiency ( LM/W)	20
Lumen (LM/node)	15
Beam Angle	91°
Color	RGB
Waterproof Rate	IP67
Ambient Temperature	-35°C /-31°F~55°C /131°F



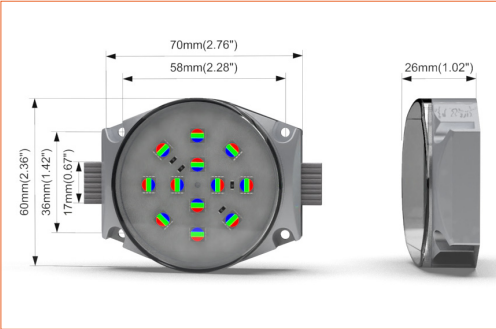
SUNO FLEX RGBW

Voltage	DC24V (23.5V <sub>min</sub> 24.5V <sub>max</sub> )
Wattage (W/node)	0.9
Lumen Efficiency ( LM/W)	38.67
Lumen (LM/node)	29
Beam Angle	91°
Color	RGBW
Waterproof Rate	IP67
Ambient Temperature	-35°C /-31°F~55°C /131°F



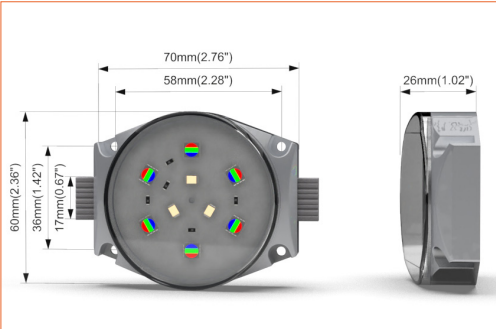
URBO FLEX WHT

Voltage	DC24V (23.5V <sub>min</sub> 24.5V <sub>max</sub> )
Wattage (W/node)	3
Lumen Efficiency ( LM/W)	172 to 182.67
Lumen (LM/node)	129 to 137
Beam Angle	70°
CCT	2700K/3000K/4000K/5000K/6000K
Waterproof Rate	IP67
Ambient Temperature	-35°C /-31°F~55°C /131°F



URBO FLEX RGB

Voltage	DC24V (23.5V <sub>min</sub> 24.5V <sub>max</sub> )
Wattage (W/node)	3
Lumen Efficiency ( LM/W)	74.67
Lumen (LM/node)	56
Beam Angle	100°
Color	RGB
Waterproof Rate	IP67
Ambient Temperature	-35°C /-31°F~55°C /131°F



URBO FLEX RGBW

Voltage	DC24V (23.5V <sub>min</sub> 24.5V <sub>max</sub> )
Wattage (W/node)	3
Lumen Efficiency ( LM/W)	132
Lumen (LM/node)	99
Beam Angle	92°
Color	RGBW
Waterproof Rate	IP67
Ambient Temperature	-35°C /-31°F~55°C /131°F

**Beamever**

Address: 100 N Howard St Ste R,  
Spokane, WA, 99201-0508 USA  
Tel: 323-5104660  
[info@beamever.com](mailto:info@beamever.com)  
[www.beamever.com](http://www.beamever.com)