

NOVA TAPE MINI

Indoor · White · 3mm Ultra-slim

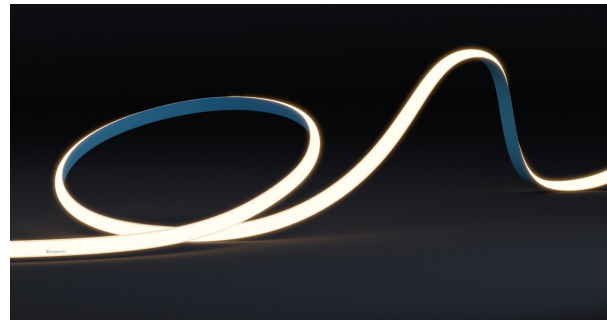
Beamever

Features

- Chips-on-board design, dot free even without any profiles
- Channel-free, easy to mount on smooth surface
- Slim and elegant, ideal for indoor applications
- 3M tape on the back makes it easy to install
- 3mm ultra-narrow width, flexible application
- 5 years warranty



| | |
|---------------|--|
| Fixture type | |
| Project name | |
| Project phase | |
| Date | |



Dimension



Physical

| | |
|-----------------------|------------------------------|
| PCB Width | 3mm |
| LED Pitch | N/A |
| Cutting Interval | 35.7mm |
| LED Brand | N/A |
| LED Size | COB |
| LED Quantity | 504 LEDs/m |
| Housing Material | N/A |
| Housing Technique | N/A |
| Adhesive Type | Yellow 3M tape |
| Feed Entry | Front |
| Feed Length | Standard length 30cm |
| Storage Temperature | -20°C (-4°F) to 45°C (113°F) |
| Ambient Temperature | -20°C (-4°F) to 40°C (104°F) |
| Max Production Length | 30m |

Performance & Electrical

| | |
|-------------------|-------------------------------|
| Voltage | 24VDC (23.5Vmin, 24.5Vmax) |
| Beam Angle | 180° |
| MacAdam | 3 steps |
| Efficacy (lm/W) | 85lm/W @4000K |
| CRI | Ra90 |
| Lumen Maintenance | > 50,000 hours |
| IP Rating | IP20 |
| Resistance | UV, solvent, saltwater, flame |
| Dimming | PWM, 0-10V, DMX |
| Control Protocol | N/A |
| Warranty | 5 years |

Certification & Safety

| | |
|----------------|-------------------------|
| Certifications | UL, CE, RoHS, REACH, CB |
| Environment | Dry locations |

| Lumen/m | 4W |
|--------------------|-----|
| ■ 2400K | 280 |
| ■ 2700K | 300 |
| ■ 3000K | 320 |
| ■ 4000K | 340 |
| ■ 6500K | 380 |
| Max. Run Length(m) | 5 |

NOVA TAPE MINI

Indoor · White · 3mm Ultra-slim

Beamever

Order Code

| Series | Temp./Color | Power | Connector Wire | IP Rating | Length(mm) |
|--------|----------------------------------------------------------|--------|-------------------------------------------------------|-----------|-----------------------------------------------------|
| NOVAMN | 24=2400K 27=2700K 30=3000K 40=4000K 65=6500K | 040=4W | OW=Open wire 15cm MFC=Male & female connector 20cm | 20=IP20 | Min. - 35.7mm Max. - 3000mm Cut Inc. - 35.7mm |

Example: NOVAMN-30-040-OW-20-05000

* Customizable—Contact Beamever representatives

Channels

| Code | Description |
|--------|----------------------------------------------------|
| BE1610 | 1m straight aluminium channel, surface mounting |
| BE2001 | 1m straight aluminium channel, recessed mounting |
| BE2004 | 1m straight aluminium channel, angled mounting |
| BE1604 | 1m straight aluminium channel, suspension mounting |

* For more options, please refer to "Beamever Profile Spec Sheet"

Accessories (Optional)

| Code | Description |
|-----------|--------------------------------------------------------|
| MFC-2P-20 | Male and female connector with 20cm cable, IP20, 2 pin |
| MFC-DC-44 | Male and female DC connector with 20cm cable, IP44 |

* Please refer to "Accessories options" for more available models.

Power supplies

| Code | Description |
|-----------------|--------------------------------------------|
| XLG-150-24-A | PSU 24V/150W IP67, Non dimmable, White |
| ELG-150-24B-3Y | PSU 24V/150W IP67, 3 in 1 dimming function |
| ELG-150-24DA-3Y | PSU 24V/150W IP67, DALI control technology |

* Please refer to "Power supplies options" for more models available.

Note

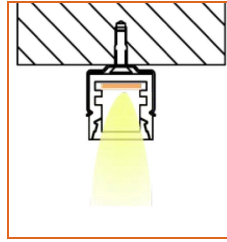
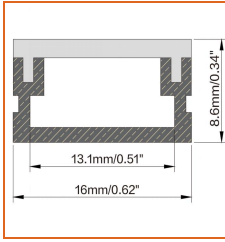
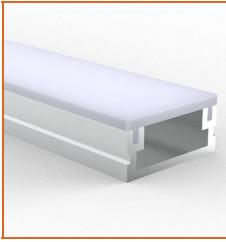
* Leave your comments or other customized demands (if any) and contact Beamever.

NOVA TAPE MINI

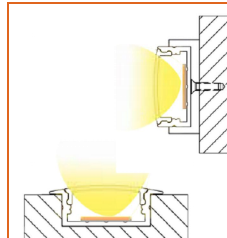
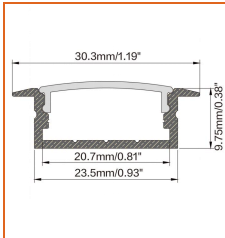
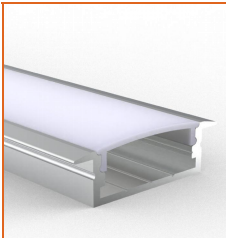
Indoor · White · 3mm Ultra-slim

Beamever

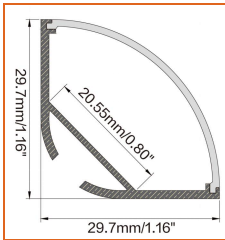
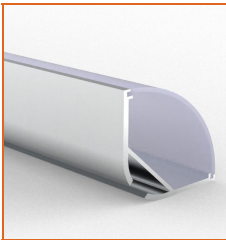
Mounting Options



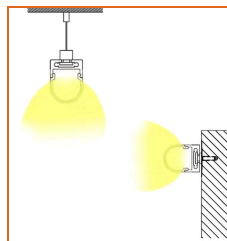
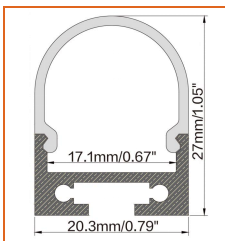
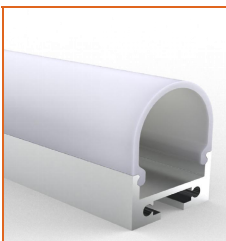
* Standard length is 1m/pcs.



* Standard length is 1m/pcs.



* Standard length is 1m/pcs.



* Standard length is 1m/pcs.

* For more options, please refer to "Beamever Profile Spec Sheet"

Name Straight Aluminum channel

Code BE1610

Material Aluminum

Mounting style Surface mounted

Length 1m

Width 16mm

Height 8.6mm

Internal width 13.1mm

Name Straight Aluminum channel

Code BE2001

Material Aluminum

Mounting style Recessed mounted

Length 1m

Width 30.3mm

Height 9.75mm

Internal width 20.7mm

Name Straight Aluminum channel

Code BE2004

Material Aluminum

Mounting style Angled mounted

Length 1m

Width 29.7mm

Height 29.7mm

Internal width 20.55mm

Name Straight Aluminum channel

Code BE1604

Material Aluminum

Mounting style Suspension mounted

Length 1m

Width 20.3mm

Height 27mm

Internal width 17.1mm

NOVA TAPE MINI

Indoor · White · 3mm Ultra-slim



Power Supplies Options

| Code | Max Load | Input | Output | Dimming | Environment | Size |
|-----------------|----------|--------------------------|--------|-------------------------|---------------|------------------------------|
| XLG-150-24-A | 150W | 100-305VAC | 24VDC | Non-Dim | Dry/Damp/IP67 | 180x63x35.5mm (L x W x H) |
| ELG-150-24B-3Y | 150W | 100-305VAC | 24VDC | 3 in 1 dimming | Dry/Damp/IP67 | 219x63x35.5mm (LxWxH) |
| ELG-150-24DA-3Y | 150W | 100-305VAC | 24VDC | DALI control technology | Dry/Damp/IP67 | 219x63x35.5mm (L x W x H) |
| LPV-150-24 | 150W | 180-305VAC | 24VDC | Non-Dim | Dry/Damp/IP67 | 148x40x30mm (L x W x H) |
| LRS-150-24 | 150W | 85-132V / 170-264VAC | 24VDC | Non-Dim | Dry | 99x97x30mm (L x W x H) |
| PWM-120-24 | 120W | 90 ~ 305V / 127 ~ 431VAC | 24VDC | 3 in 1 dimming | Dry/Damp/IP67 | 191x63x37.5mm (LxWxH) |

* Please refer to the spec sheet of each power supply for more detailed information

Accessories Options



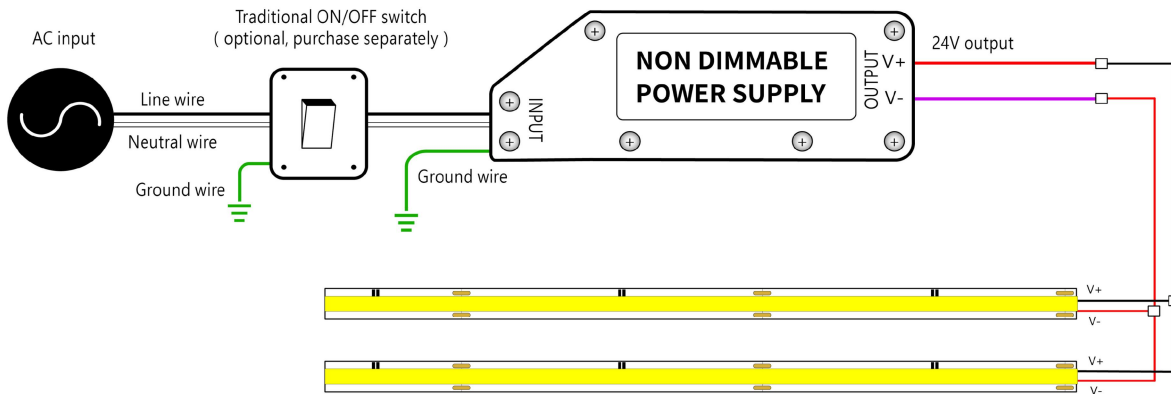
Name Male & female connector
Code MFC-2P-20
Male and female connector with 20cm cable, IP20, 2 pin



Name Male & female DC connector
Code MFC-DC-44
Male and female DC connector with 20cm cable, IP44

Wiring Diagram

Non Dimmable



Dimmable

