

# NOVA TAPE RGBW

Indoor · RGBW

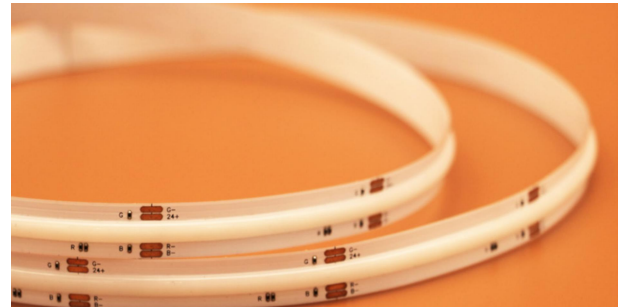
# Beamever

## Features

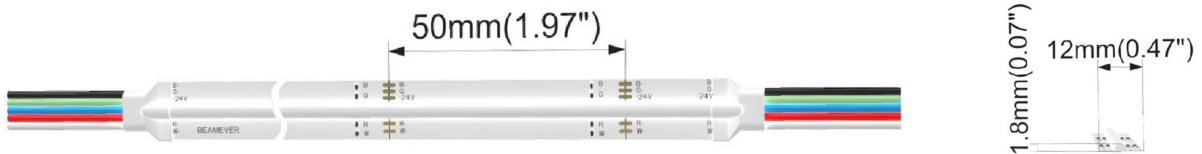
- Field cuttable & joinable
- Channel-free, easy to mount on smooth surface
- Slim and elegant, ideal for indoor applications
- 3M tape on the back makes it easy to install
- 3 years warranty
- RGBW allows for versatile lighting effects



Fixture type	
Project name	
Project phase	
Date	



## Dimension



## Physical

PCB Width	12mm
LED Pitch	N/A
Cutting Interval	50mm
LED Brand	Sanan
LED Size	COB
LED Quantity	560 LEDs/m
Housing Material	N/A
Housing Technique	N/A
Adhesive Type	Yellow 3M tape
Feed Entry	Front
Feed Length	Standard length 15cm
Storage Temperature	-40°C(-40°F) to 60°C (140°F)
Ambient Temperature	-40°C(-40°F) to 60°C (140°F)
Max Production Length	30m

## Performance & Electrical

Voltage	24VDC (23.5Vmin, 24.5Vmax)
Beam Angle	150°
MacAdam	2 steps
Efficacy (lm/W)	49lm/W @RGBW40
CRI	N/A
Lumen Maintenance	> 30,000 hours
IP Rating	IP20
Resistance	UV, solvent, saltwater, flame
Dimming	PWM, 0-10V, DMX
Control Protocol	N/A
Warranty	3 years

## Certification & Safety

Certifications	UL, CE, RoHS, REACH, CB
Environment	Dry locations

Lumen/m	16W
■ R	112
■ G	89
■ B	298
■ W27	249
■ W30	259
■ W40	312
■ W65	259
■ RGBW40	800
Max. Run Length(m)	5

# NOVA TAPE RGBW

Indoor · RGBW



## Order Code

Series	Temp./Color	Power	Connector Wire	IP Rating	Length(mm)
NOVA	RGBW27 (2700K) RGBW30 (3000K) RGBW40 (4000K) RGBW65 (6500K)	160=16W	OW=Open wire 15cm MFC=Male & female connector 20cm	20=IP20	Min. - 50mm Max. - 30000mm Cut Inc. - 50mm

Example: NOVA- RGBW27-160-OW-20-05000

\* Customizable—Contact Beamever representatives

## Channels

Code	Description
BE1610	1m straight aluminium channel, surface mounting
BE2001	1m straight aluminium channel, recessed mounting
BE2004	1m straight aluminium channel, angled mounting
BE1604	1m straight aluminium channel, suspension mounting

\* For more options, please refer to "Beamever Profile Spec Sheet"

## Accessories (Optional)

Code	Description
MFC-5P-20	Male and female connector with 20cm cable, IP20, 5 pin
MFC-DC-44	Male and female DC connector with 20cm cable, IP44

\* Please refer to "Accessories options" for more available models.

## Power supplies or controllers

Code	Description
XLG-150-24-A	PSU 24V/150W IP67, Non dimmable, White
ELG-150-24B-3Y	PSU 24V/150W IP67, 3 in 1 dimming function
ELG-150-24DA-3Y	PSU 24V/150W IP67, DALI control technology

\* Please refer to "Power supplies options" and "DMX decoders and controllers options" for more models available.

## Note

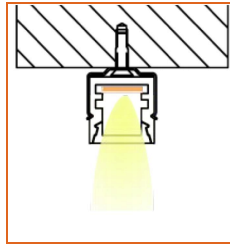
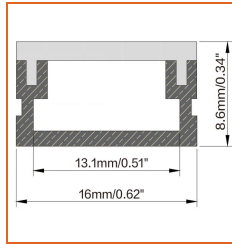
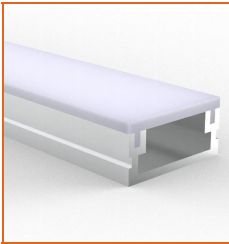
\* Leave your comments or other customized demands (if any) and contact Beamever.

# NOVA TAPE RGBW

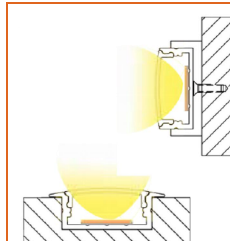
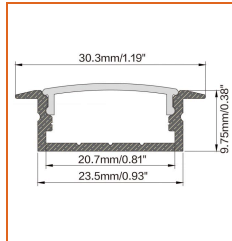
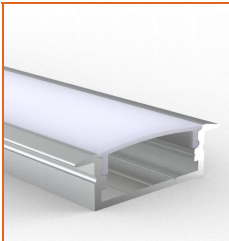
Indoor · RGBW



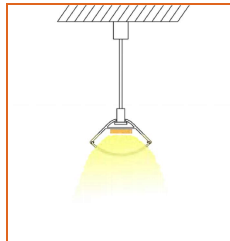
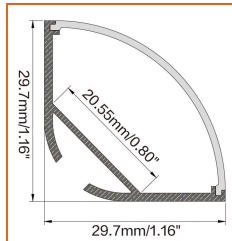
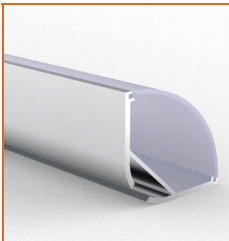
## Mounting Options



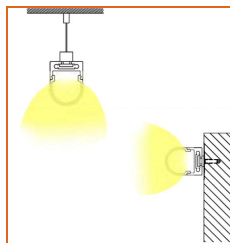
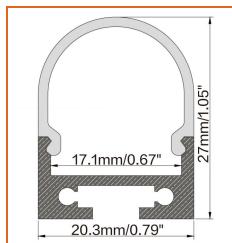
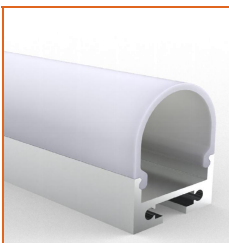
\* Standard length is 1m/pcs.



\* Standard length is 1m/pcs.



\* Standard length is 1m/pcs.



\* Standard length is 1m/pcs.

\* For more options, please refer to "Beamever Profile Spec Sheet"

Name	Straight Aluminum channel
Code	BE1610
Material	Aluminum
Mounting style	Surface mounted
Length	1m
Width	16mm
Height	8.6mm
Internal width	13.1mm

Name	Straight Aluminum channel
Code	BE2001
Material	Aluminum
Mounting style	Recessed mounted
Length	1m
Width	30.3mm
Height	9.75mm
Internal width	20.7mm

Name	Straight Aluminum channel
Code	BE2004
Material	Aluminum
Mounting style	Angled mounted
Length	1m
Width	29.7mm
Height	29.7mm
Internal width	20.55mm

Name	Straight Aluminum channel
Code	BE1604
Material	Aluminum
Mounting style	Suspension mounted
Length	1m
Width	20.3mm
Height	27mm
Internal width	17.1mm

## Power Supplies Options

Code	Max Load	Input	Output	Dimming	Environment	Size
XLG-150-24-A	150W	100-305VAC	24VDC	Non-Dim	Dry/Damp/IP67	180x63x35.5mm (L x W x H)
ELG-150-24B-3Y	150W	100-305VAC	24VDC	3 in 1 dimming	Dry/Damp/IP67	219x63x35.5mm (LxWxH)
ELG-150-24DA-3Y	150W	100-305VAC	24VDC	DALI control technology	Dry/Damp/IP67	219x63x35.5mm (L x W x H)
LPV-150-24	150W	180-305VAC	24VDC	Non-Dim	Dry/Damp/IP67	148x40x30mm (L x W x H)
LRS-150-24	150W	85-132V / 170-264VAC	24VDC	Non-Dim	Dry	99x97x30mm (L x W x H)
PWM-120-24	120W	90 ~ 305V / 127 ~ 431VAC	24VDC	3 in 1 dimming	Dry/Damp/IP67	191x63x37.5mm (LxWxH)

\* Please refer to the spec sheet of each power supply for more detailed information

## DMX Decoders & Controllers & Power Repeaters Options

Type	Code	Description	Environment	Size
DMX Decoders	LT- 854-5A	4 channels output, Max. 5A current per channel, up to 480W output power	Indoor	175×42×33mm (L x W x H)
Controllers	EX4S	512 DMX channels	Indoor	86×86×36mm (L x W x H)
Controllers	M4+M4-3A	4 Channels output, Max 3A current per channel, up to 288W output power	Indoor	125×33mm×20mm (L x W x H)
Power Repeaters	LT-3040-5A	4 Channels output, Max 5A current per channel, up to 480W output power	Indoor	175×44×30mm (L x W x H)

## Accessories Options



Name Male & female connector

Code MFC-5P-20

Male and female connector with 20cm cable, IP20, 5 pin



Name Male & female DC connector

Code MFC-DC-44

Male and female DC connector with 20cm cable, IP44



Name VHB 3M adhesive tape

Code VHB-12

VHB 3M adhesive back tape, stronger stickiness.

# NOVA TAPE RGBW

Indoor · RGBW



## Wiring Diagram

Dimmable

