

# AERO TAPE IP65

Indoor · White

# Beamever

## Features

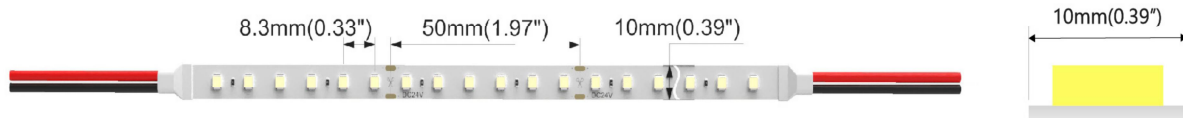
- Field cuttable
- Operates at safe and energy-efficient voltage of DC24V
- Slim and elegant, ideal for indoor applications
- 3M tape on the back makes it easy to install
- Available in a variety of CCT color options
- 5 years warranty



|               |  |
|---------------|--|
| Fixture type  |  |
| Project name  |  |
| Project phase |  |
| Date          |  |



## Dimension & Bending



## Physical

|                       |                      |
|-----------------------|----------------------|
| PCB Width             | 10mm                 |
| LED Pitch             | 8.3mm                |
| Cutting Interval      | 50mm                 |
| LED Brand             | Sanan                |
| LED Size              | 2835                 |
| LED Quantity          | 120 LEDs/m           |
| Housing Material      | N/A                  |
| Housing Technique     | Surface Coating      |
| Adhesive Type         | Yellow 3M tape       |
| Feed Entry            | Front                |
| Feed Length           | Standard length 15cm |
| Storage Temperature   | -25~60°C (-13~140°F) |
| Ambient Temperature   | -20~45°C (-4~113°F)  |
| Max Production Length | 30m                  |

## Performance & Electrical

|                   |                               |
|-------------------|-------------------------------|
| Voltage           | 24VDC (23.5Vmin, 24.5Vmax)    |
| Beam Angle        | 120°                          |
| MacAdam           | 3 steps                       |
| Efficacy (lm/W)   | 90lm/W @4000K                 |
| CRI               | Ra90                          |
| Lumen Maintenance | > 54,000 hours                |
| IP Rating         | IP65                          |
| Resistance        | UV, solvent, saltwater, flame |
| Dimming           | Triac, ELV, PWM, 0-10V, DMX   |
| Control Protocol  | N/A                           |
| Warranty          | 5 years                       |

## Certification & Safety

|                |                         |
|----------------|-------------------------|
| Certifications | UL, CE, REACH, RoHS, CB |
| Environment    | Dry, damp locations     |

| Lumen/m             | 4.8W | 9.6W | 14.4W | 19.2W | 24W  |
|---------------------|------|------|-------|-------|------|
| ■ 2700K             | 470  | 840  | 1176  | 1500  | 1800 |
| ■ 3000K             | 485  | 860  | 1195  | 1535  | 1870 |
| ■ 4000K             | 500  | 880  | 1266  | 1620  | 1944 |
| ■ 6500K             | 512  | 890  | 1268  | 1632  | 1950 |
| Max. Run Length (M) | 5    | 5    | 5     | 5     | 5    |

# AERO TAPE IP65

Indoor · White



## Order Code

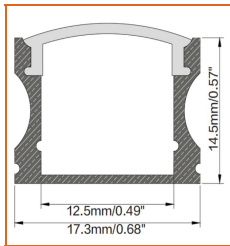
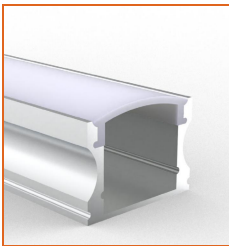
| Series | Temp./Color                                  | Power   | Connector Wire  | IP Rating                 | Length (mm)                             |
|--------|--|---|---|---------------------------|---|
| AERO   | 27=2700K<br>30=3000K<br>40=4000K<br>65=6500K | 048=4.8W<br>096=9.6W<br>144=14.4W<br>192=19.2W<br>240=24W | OW=Open wire 15cm<br>MFC=Male & female connector 20cm | 65=IP65 (Surface Coating) | Min. 50mm<br>Max 3000mm<br>Cut Inc.50mm |

Example: AERO-30-048-OW-65-05000

\* Customizable—Contact Beamever representatives

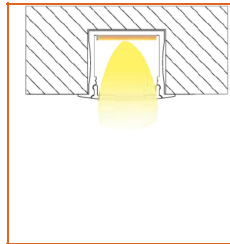
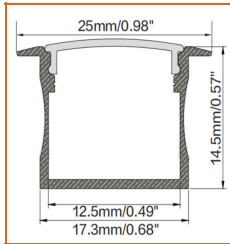
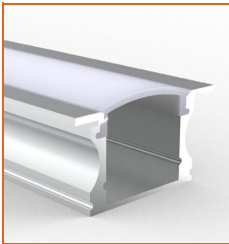
\*This product is not rated as submersible. Do not install in a location where water may pool or collect.

## Mounting Options



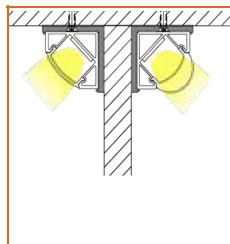
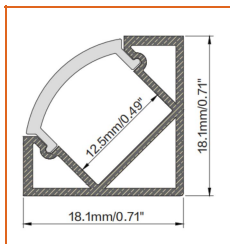
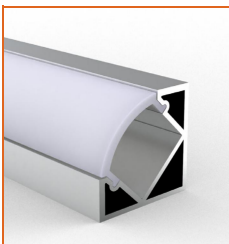
\* Standard length is 1m/pcs.

|                |                           |
|----------------|---------------------------|
| Name           | Straight aluminum channel |
| Code           | BE1202                    |
| Material       | Alluminum                 |
| Mounting style | Surface mounted           |
| Length         | 1m                        |
| Width          | 17.3mm                    |
| Height         | 14.5mm                    |
| Internal width | 12.5mm                    |



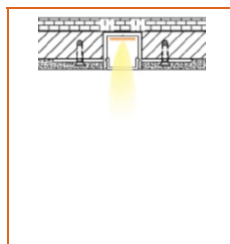
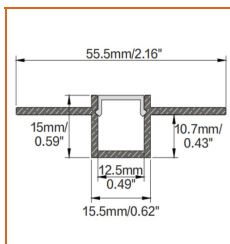
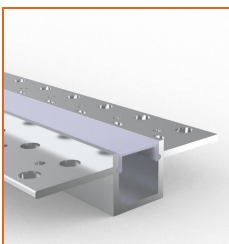
\* Standard length is 1m/pcs.

|                |                           |
|----------------|---------------------------|
| Name           | Straight aluminum channel |
| Code           | BE1201                    |
| Material       | Alluminum                 |
| Mounting style | Recessed mounted          |
| Length         | 1m                        |
| Width          | 17.3mm                    |
| Height         | 14.5mm                    |
| Internal width | 12.5mm                    |



\* Standard length is 1m/pcs.

|                |                           |
|----------------|---------------------------|
| Name           | Straight aluminum channel |
| Code           | BE1203                    |
| Material       | Alluminum                 |
| Mounting style | Angled mounted            |
| Length         | 1m                        |
| Width          | 18.1mm                    |
| Height         | 18.1mm                    |
| Internal width | 12.5mm                    |



\* Standard length is 1m/pcs.

\* For more options, please refer to "Beamever Profile Spec Sheet"

|                |                           |
|----------------|---------------------------|
| Name           | Straight aluminum channel |
| Code           | BE5615                    |
| Material       | Alluminum                 |
| Mounting style | Mud-in                    |
| Length         | 1m                        |
| Width          | 15.5mm                    |
| Height         | 15mm                      |
| Internal width | 12.5mm                    |

# AERO TAPE IP65

Indoor · White



## Driver Options

| Code            | Max Load | Input                | Output | Dimming                 | Environment   | Size                         |
|-----------------|----------|----------------------|--------|-------------------------|---------------|------------------------------|
| XLG-150-24-A    | 150W     | 100-305VAC           | 24VDC  | Non-Dim                 | Dry/Damp/IP67 | 180x63x35.5mm<br>(L x W x H) |
| ELG-150-24B-3Y  | 150W     | 100-305VAC           | 24VDC  | 3 in 1 dimming          | Dry/Damp/IP67 | 219x63x35.5mm<br>(LxWxH)     |
| ELG-150-24DA-3Y | 150W     | 100-305VAC           | 24VDC  | DALI control technology | Dry/Damp/IP67 | 219x63x35.5mm<br>(L x W x H) |
| LPV-150-24      | 150W     | 180-305VAC           | 24VDC  | Non-Dim                 | Dry/Damp/IP67 | 148x40x30mm<br>(L x W x H)   |
| LRS-150-24      | 150W     | 85-132V / 170-264VAC | 24VDC  | Non-Dim                 | Dry           | 99x97x30mm<br>(L x W x H)    |
| PWM-120-24      | 120W     | 90-305V / 127-431VAC | 24VDC  | 3 in 1 dimming          | Dry/Damp/IP67 | 191x63x37.5mm<br>(LxWxH)     |

\* Please refer to the spec sheet of each power supply for more detailed information

## Accessories Options (Optional)



Name Male & female connector

Code MFC-2P-20

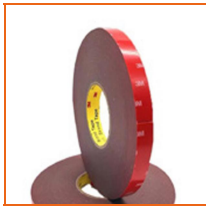
Male and female connector with 20cm cable, IP20, 2 pin



Name Male & female DC connector

Code MFC-DC-44

Male and female DC connector with 20cm cable, IP44



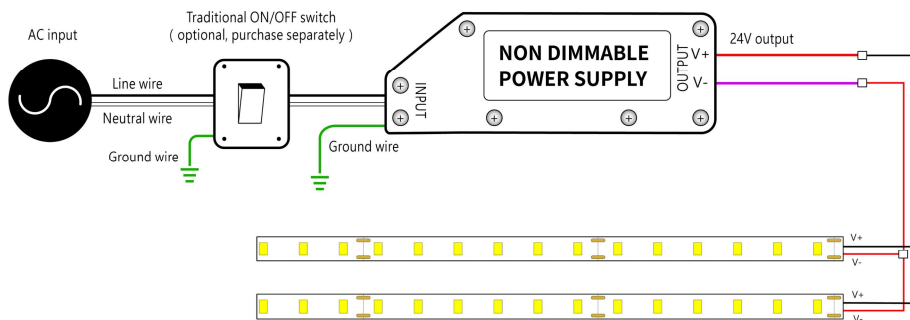
Name VHB 3M adhesive tape

Code VHB

VHB 3M adhesive back tape, stronger stickiness.

## Wiring Diagram

### Non Dimmable



### Dimmable

