

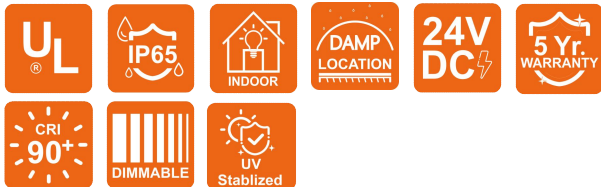
LINIO NEON 360° RGB

Indoor · All-direction Bending · 360° Emitting

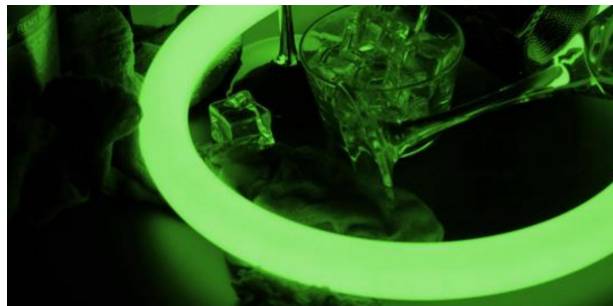
Beamever

Features

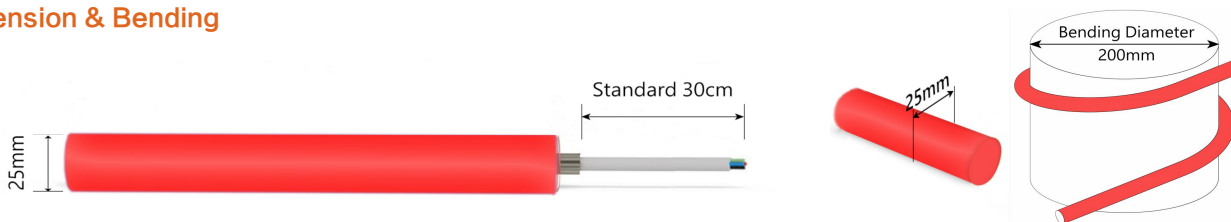
- Low voltage 24V DC
- Diameter of 25mm
- Multiple mounting accessories for any design needs
- 360° emitting provides unparalleled creative possibilities
- High-grade Dow Corning silicone
- High-quality LED chips



Fixture type	
Project name	
Project phase	
Date	



Dimension & Bending



Physical

Dimensions	25mm (diameter)
Bend Direction	All-direction bending
Bend Diameter	200mm
Cutting Interval	50mm
Field Cuttable	No
Housing Material	Dow Corning
Housing Technique	Tubing
Body Color	White
Finish	Matte
Feed Entry	Front, side
Feed Length	Standard length 30cm
End Cap	Injected (Factory made only)
Mounting	18 types of mounting accessories
Storage Temperature	-25~60°C (-13~140°F)
Ambient Temperature	-25~45°C (-13~113°F) @10W
Max. Production Length	5m

Performance & Electrical

Voltage	24VDC (23.5Vmin, 24.5Vmax)
Beam Angle	360°
MacAdam	3 steps
Efficacy (lm/W)	19.3lm/W @10W
CRI	N/A
Lumen Maintenance	> 30,000 hours
IP Rating	IP65
Resistance	UV, solvent, saltwater, flame
Dimming	PWM, 0-10V, DMX
Control Protocol	N/A
Warranty	5 years

Certification & Safety

Certifications	UL, CE, RoHS, REACH, CB
Environment	Dry or damp locations

Lumen/m	10W
■ R	39
■ G	176
■ B	27
■ RGB	193
Max. Run Length (m)	5

LINIO NEON 360° RGB

Indoor · All-direction Bending · 360° Emitting



Order Code

Series	Temp./Color	Power	Feed Entry	Connector Wire	End Cap	Length(mm)
LN360	RGB	010=10W	FC=Front + Closed SC=Side+ Closed *Only available for feed entry in one side	OW=Open wire 30cm MLC=Male connector FLC=Female connector 30cm	IJ=Injected end cap (IP65) * End caps are added by default	Min. - 50mm Max. run - 5000mm Cut Inc. - 50mm

Example: LN360-RGB-010-FC-OW-IJ-05000

* Customizable—Contact Beamever representatives

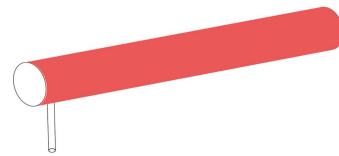
*This product is not rated as submersible. Do not install in a location where water may pool or collect.

Feed Entry Options

Front + Closed feed entry (FC)



Side + Closed feed entry (SC)

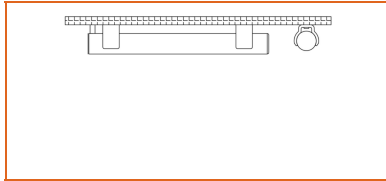


Mounting Options

Surface mount clear bracket - open clip

Code LN360-SFC-O

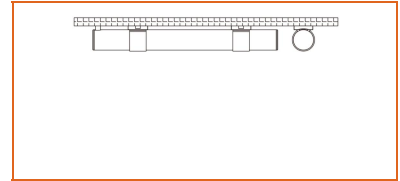
Mounting Type



Surface mount clear bracket - closed clip

Code LN360-SFC-C

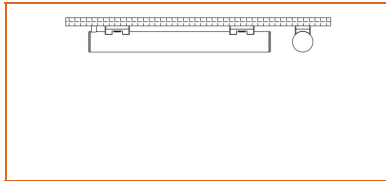
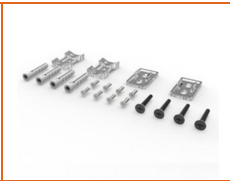
Mounting Type



Surface mount clear bracket - low profile clip

Code LN360-SFC-L

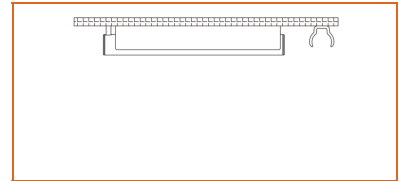
Mounting Type



Surface mount clear bracket - PC channel

Code LN360-SFC-PC

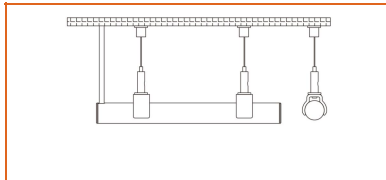
Mounting Type



Suspended mount clear bracket - open clip

Code LN360-SPC-O

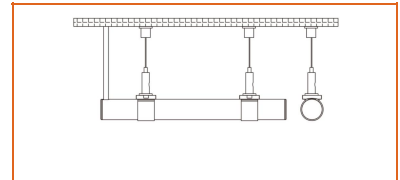
Mounting Type



Suspended mount clear bracket - closed clip

Code LN360-SPC-C

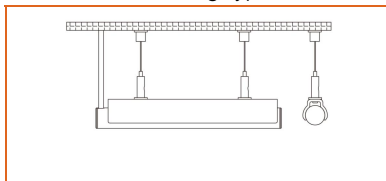
Mounting Type



Suspended mount clear bracket - PC channel

Code LN360-SPC-PC

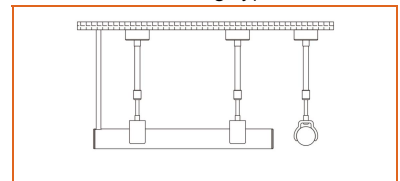
Mounting Type



Telescoping clear bracket - open clip (Length: 50-99cm)

Code LN360-TLC-O

Mounting Type



LINIO NEON 360° RGB

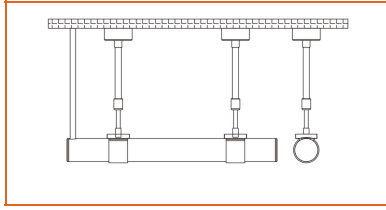
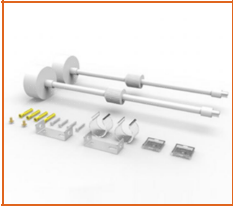
Indoor · All-direction Bending · 360° Emitting



Telescoping clear bracket - closed clip (Length: 50-99cm)

Code LN360-TLC-C

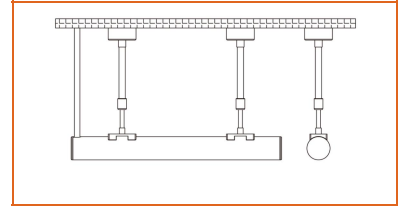
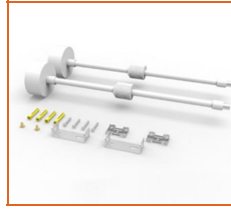
Mounting Type



Telescoping clear bracket - low profile clip (Length: 50-99cm)

Code LN360-TLC-L

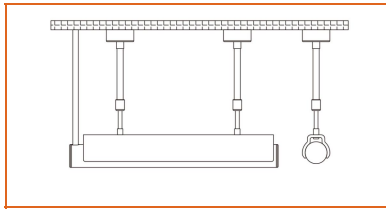
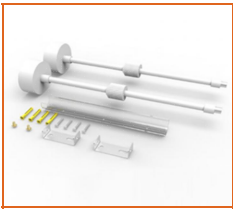
Mounting Type



Telescoping clear bracket - PC channel (Length: 50-99cm)

Code LN360-TLC-PC

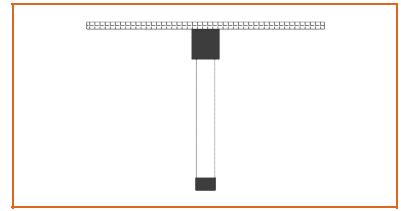
Mounting Type



Vertical metal flush surface mount bracket - black

Code LN360-VB

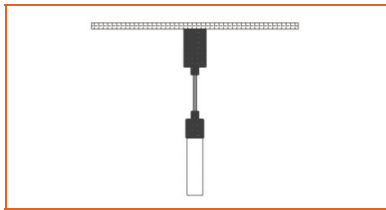
Mounting Type



Vertical pendant suspended mount bracket - black

Code LN360-VSB

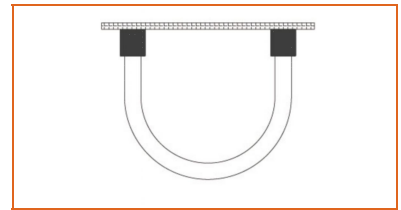
Mounting Type



U-shaped metal flush mounting bracket - black

Code LN360-UB

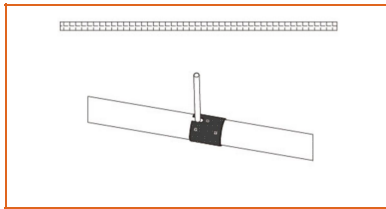
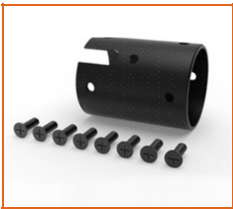
Mounting Type



Metal joiner bracket - black (side cable entry only)

Code LN360-JNB-S

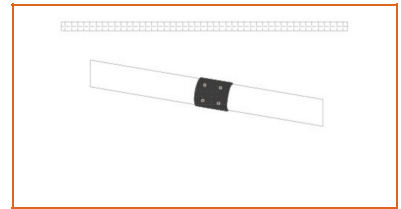
Mounting Type



Metal joiner bracket - black (closed end cap)

Code LN360-JNB-C

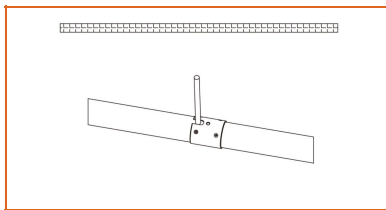
Mounting Type



Joiner bracket - clear (side cable entry only)

Code LN360-JNC-S

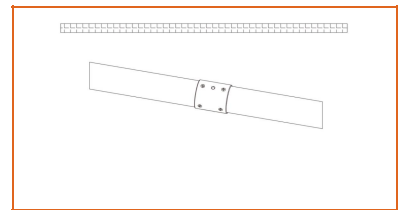
Mounting Type



Joiner bracket - clear (closed end cap)

Code LN360-JNC-C

Mounting Type



Driver Options

Code	Max Load	Input	Output	Dimming	Environment	Size
XLG-150-24-A	150W	100-305VAC	24VDC	Non-Dim	Dry/Damp/IP67	180x63x35.5mm (L x W x H)
ELG-150-24B-3Y	150W	100-305VAC	24VDC	3 in 1 dimming	Dry/Damp/IP67	219x63x35.5mm (LxWxH)
ELG-150-24DA-3Y	150W	100-305VAC	24VDC	DALI control technology	Dry/Damp/IP67	219x63x35.5mm (L x W x H)
LPV-150-24	150W	180-305VAC	24VDC	Non-Dim	Dry/Damp/IP67	148x40x30mm (L x W x H)
LRS-150-24	150W	85-132V / 170-264VAC	24VDC	Non-Dim	Dry	99x97x30mm (L x W x H)
PWM-120-24	120W	90 ~ 305V / 127 ~ 431VAC	24VDC	3 in 1 dimming	Dry/Damp/IP67	191x63x37.5mm (LxWxH)

* Please refer to the spec sheet of each power supply for more detailed information

DMX Decoders & Controllers & Power Repeaters Options

Type	Code	Description	Environment	Size
DMX Decoders	LT- 854-5A	4 channels output, Max. 5A current per channel, up to 480W output power	Indoor	175×42×33mm (L x W x H)
Controllers	EX4S	512 DMX channels	Indoor	86×86×36mm (L x W x H)
Controllers	M6+M3-3A	3 Channels output, Max 3A current per channel, up to 216W output power	Indoor	135×30×20mm (L x W x H)
Power Repeaters	LT-3040-5A	3 Channels output, Max 6A current per channel, up to 480W output power	Indoor	175×44×30mm (L x W x H)

Accessories Options



Name Male and female connectors

Code MFC-4P-67-W

Male and female connectors with 30cm white cable, IP67, 4 pin

LINIO NEON 360° RGB

Indoor · All-direction Bending · 360° Emitting



Wiring Diagram

Dimmable

