

NOVA TAPE S TW

Indoor · Ultra-slim · Dot-free

Beamever

Features

- Field cuttable
- Channel-free, easy to mount on smooth surface
- 4mm ultra-slim, ideal for edge lighting applications
- 3M tape on the back makes it easy to install
- 5 years warranty
- Available in a variety of CCT color options



Fixture type	
Project name	
Project phase	
Date	



Dimension



Physical

PCB Width	4mm
LED Pitch	N/A
Cutting Interval	27.8mm
LED Brand	Sanan
LED Type	COB
LED Quantity	576 LEDs/m
Housing Material	N/A
Housing Technique	N/A
Adhesive Type	Yellow 3M tape
Feed Entry	Front
Feed Length	Standard length 15cm
Storage Temperature	-25~60°C (-13~140°F)
Ambient Temperature	-20~45°C (-4~113°F)
Max Production Length	30m

Performance & Electrical

Voltage	24VDC (23.5Vmin, 24.5Vmax)
Beam Angle	150°
MacAdam	3 steps
Efficacy (lm/W)	67.5lm/W
CRI	Ra>90
Lumen Maintenance	> 54,000 hours
IP Rating	IP20
Resistance	UV, solvent, saltwater, flame
Dimming	Triac, ELV, PWM, 0-10V, DMX, SPI
Control Protocol	N/A
Warranty	5 years

Certification & Safety

Certifications	UL, CE, RoHS, REACH, CB
Environment	Dry locations

Lumen/m	12W
■ 2700K	562
■ 5000K	704
■ 2700K+5000K	810
Max. Run Length (M)	5

NOVA TAPE S TW

Indoor · Ultra-slim · Dot-free



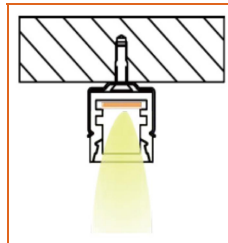
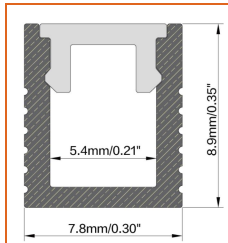
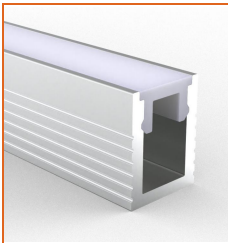
Order Code

Series	Temp./Color	Power	Feed Entry	Connector Wire	IP Rating	Length (mm)
NOVAS	2750=2700K+5000K	012=12W	FF=Front + Front FC=Front + Closed	OW=Open wire 15cm MFC=Male & female connector 20cm	20=IP20	Min. - 27.8mm Max. run - 5000mm Cut Inc. - 27.8mm

Example: NOVAS-2750-012-FF-OW-20-05000

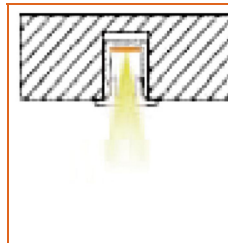
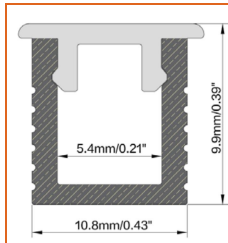
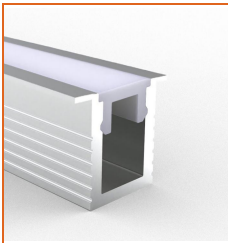
* Customizable—Contact Beamever representatives

Mounting Options



* Standard length is 1m/pcs.

Name	Straight aluminum channel
Code	BE078
Material	Alluminum
Mounting style	Surface mounted
Length	1m
Width	7.8mm
Height	8.9mm
Internal width	5.4mm



* Standard length is 1m/pcs.

* For more options, please refer to "Beamever Profile Spec Sheet"

Name	Recessed aluminum channel
Code	BE078-1
Material	Alluminum
Mounting style	Recessed mounted
Length	1m
Width	10.8mm
Height	9.9mm
Internal width	5.4mm

Driver Options

Code	Max Load	Input	Output	Dimming	Environment	Size
XLG-150-24-A	150W	100-305VAC	24VDC	Non-Dim	Dry/Damp/IP67	180x63x35.5mm (L x W x H)
ELG-150-24B-3Y	150W	100-305VAC	24VDC	3 in 1 dimming	Dry/Damp/IP67	219x63x35.5mm (LxWxH)
ELG-150-24DA-3Y	150W	100-305VAC	24VDC	DALI control technology	Dry/Damp/IP67	219x63x35.5mm (L x W x H)
LM-100-24-U2A2	100W	120-277VAC	24VDC	0-10V (1-10V/10V PWM/RX, Push DIM/CCT)	Dry	352x43x30mm (L x W x H)
LRS-150-24	150W	85-132V / 170-264VAC	24VDC	Non-Dim	Dry	99x97x30mm (L x W x H)
PWM-120-24	120W	90-305V / 127-431VAC	24VDC	3 in 1 dimming	Dry/Damp/IP67	191x63x37.5mm (LxWxH)

* Please refer to the spec sheet of each power supply for more detailed information

NOVA TAPE S TW

Indoor · Ultra-slim · Dot-free



DMX Decoders & Controllers Options

Type	Code	Description	Environment	Size
DMX Decoders	LT-903	3 channels output, Max. 8A current per channel, up to 576W output power	Indoor	122x110x3mm (L x W x H)
Controllers	M2+M3-3A	3 channels output, Max. 3A current per channel, up to 216W output power	Indoor	135x30x20mm (L x W x H)
Controllers	GA2	512 DMX channels, 4 touch sensitive buttons (on/off, mode, previous, next)	Indoor	87x110x10mm (L x W x H)
Controllers	CW4	1024 DMX channels, 6 SECne buttons and a color wheel, ideal for hotels, homes and public environments	Indoor	145x107x10mm (L x W x H)

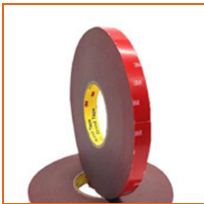
Accessories Options (Optional)



Name Male & female connector
 Code MFC-2P-20
 Male and female connector with 20cm cable, IP20, 2 pin



Name Male & female DC connector
 Code MFC-DC-44
 Male and female DC connector with 20cm cable, IP44



Name VHB 3M adhesive tape
 Code VHB
 VHB 3M adhesive back tape, stronger stickiness.

Wiring Diagram

Dimmable

