

AERO TAPE ECO

Indoor · White

Beamever

Features

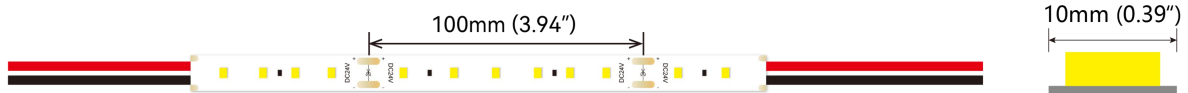
- Field cuttable & joinable
- Operates at safe and energy-efficient voltage of DC24V
- Slim and elegant, ideal for indoor applications
- 3M tape on the back makes it easy to install
- Available in a variety of CCT color options
- 5 years warranty



| | |
|---------------|--|
| Fixture type | |
| Project name | |
| Project phase | |
| Date | |



Dimension & Bending



Physical

| | |
|-----------------------|----------------------|
| PCB Width | 10mm |
| LED Pitch | 16.7mm |
| Cutting Interval | 100mm |
| LED Brand | Sanan |
| LED Size | 2835 |
| LED Quantity | 60 LEDs/m |
| Housing Material | N/A |
| Housing Technique | N/A |
| Adhesive Type | Yellow 3M tape |
| Feed Entry | Front |
| Feed Length | Standard length 15cm |
| Storage Temperature | -25~60°C (-13~140°F) |
| Ambient Temperature | -20~40°C (-4~104°F) |
| Max Production Length | 30m |

Performance & Electrical

| | |
|-------------------|-------------------------------|
| Voltage | 24VDC (23.5Vmin, 24.5Vmax) |
| Beam Angle | 120° |
| MacAdam | 3 steps |
| Efficacy (lm/W) | 95.8lm/W @4000K 14.4W |
| CRI | Ra90 |
| Lumen Maintenance | > 50,000 hours |
| IP Rating | IP20 |
| Resistance | UV, solvent, saltwater, flame |
| Dimming | Triac, ELV, PWM, 0-10V, DMX |
| Warranty | 5 years |

Certification & Safety

| | |
|----------------|-------------------------|
| Certifications | UL, CE, REACH, RoHS, CB |
| Environment | Dry location |

| Lumen/m | 4.8W | 9.6W | 14.4W |
|---------------------|------|------|-------|
| ■ 2700K | 440 | 826 | 1216 |
| ■ 3000K | 472 | 896 | 1277 |
| ■ 4000K | 493 | 936 | 1399 |
| ■ 6500K | 504 | 946 | 1439 |
| Max. Run Length (m) | 5 | 5 | 5 |

AERO TAPE ECO

Indoor · White

Beamever

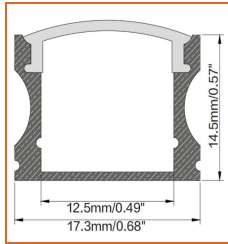
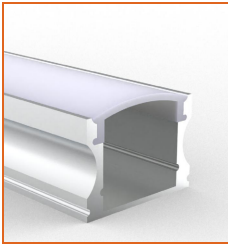
Order Code

| Series | Temp./Color | Power | Feed Entry | Connector Wire | IP Rating | Length (mm) |
|--------|--|-----------------------------------|---------------------------------------|---|-----------|---|
| AEROE | 27=2700K 30=3000K 40=4000K 65=6500K | 048=4.8W 096=9.6W 144=14.4W | FF=Front + Front FC=Front + Closed | OW=Open wire 15cm MFC=Male & female connector 20cm | 20=IP20 | Min. - 100mm Max. run - 5000mm Cut Inc. - 100mm |

Example: AEROE-30-048-FF-OW-20-01000

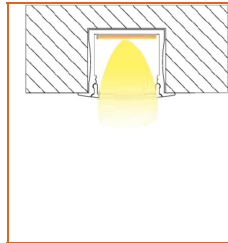
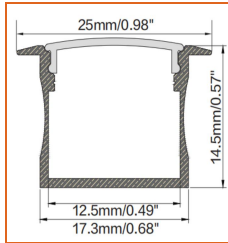
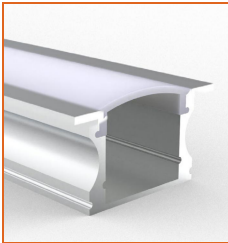
* Customizable—Contact Beamever representatives

Mounting Options



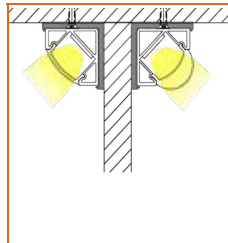
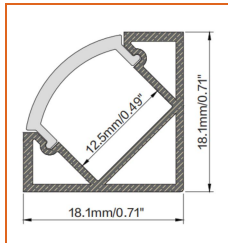
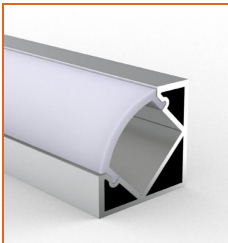
* Standard length is 1m/pcs.

| | |
|----------------|---------------------------|
| Name | Straight aluminum channel |
| Code | BE1202 |
| Material | Alluminum |
| Mounting style | Surface mounted |
| Length | 1m |
| Width | 17.3mm |
| Height | 14.5mm |
| Internal width | 12.5mm |



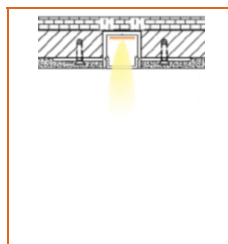
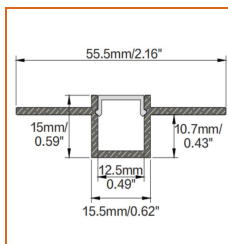
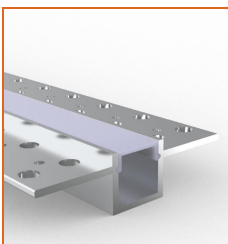
* Standard length is 1m/pcs.

| | |
|----------------|---------------------------|
| Name | Straight aluminum channel |
| Code | BE1201 |
| Material | Alluminum |
| Mounting style | Recessed mounted |
| Length | 1m |
| Width | 17.3mm |
| Height | 14.5mm |
| Internal width | 12.5mm |



* Standard length is 1m/pcs.

| | |
|----------------|---------------------------|
| Name | Straight aluminum channel |
| Code | BE1203 |
| Material | Alluminum |
| Mounting style | Angled mounted |
| Length | 1m |
| Width | 18.1mm |
| Height | 18.1mm |
| Internal width | 12.5mm |



* Standard length is 1m/pcs.

* For more options, please refer to "Beamever Profile Spec Sheet"

| | |
|----------------|---------------------------|
| Name | Straight aluminum channel |
| Code | BE5615 |
| Material | Alluminum |
| Mounting style | Mud-in |
| Length | 1m |
| Width | 15.5mm |
| Height | 15mm |
| Internal width | 12.5mm |

Driver Options

| Code | Max Load | Input | Output | Dimming | Environment | Size |
|-----------------|----------|----------------------|--------|-------------------------|---------------|------------------------------|
| XLG-150-24-A | 150W | 100-305VAC | 24VDC | Non-Dim | Dry/Damp/IP67 | 180x63x35.5mm (L x W x H) |
| ELG-150-24B-3Y | 150W | 100-305VAC | 24VDC | 3 in 1 dimming | Dry/Damp/IP67 | 219x63x35.5mm (LxWxH) |
| ELG-150-24DA-3Y | 150W | 100-305VAC | 24VDC | DALI control technology | Dry/Damp/IP67 | 219x63x35.5mm (L x W x H) |
| LPV-150-24 | 150W | 180-305VAC | 24VDC | Non-Dim | Dry/Damp/IP67 | 148x40x30mm (L x W x H) |
| LRS-150-24 | 150W | 85-132V / 170-264VAC | 24VDC | Non-Dim | Dry | 99x97x30mm (L x W x H) |
| PWM-120-24 | 120W | 90-305V / 127-431VAC | 24VDC | 3 in 1 dimming | Dry/Damp/IP67 | 191x63x37.5mm (LxWxH) |

* Please refer to the spec sheet of each power supply for more detailed information

Accessories Options (Optional)



Name Strip to strip connector

Code AERO20-ST5-2P-10

Strip to strip connector, 2 pin, IP20



Name Strip to strip jumper connector

Code AERO20-ST5J-2P-10

Strip to strip jumper connector with 15cm cable, 2 pin, IP20



Name Strip to cable connector

Code AERO20-STC-2P-10

Strip to cable connector with 15cm cable, 2 pin, IP20



Name L-shaped connector

Code AERO20-L-2P-10

L-shaped connector, 2 pin, IP20



Name Male & female connector

Code MFC-2P-20

Male and female connector with 20cm cable, IP20, 2 pin



Name Male & female DC connector

Code MFC-DC-44

Male and female DC connector with 20cm cable, IP44



Name VHB 3M adhesive tape

Code VHB

VHB 3M adhesive back tape, stronger stickiness.

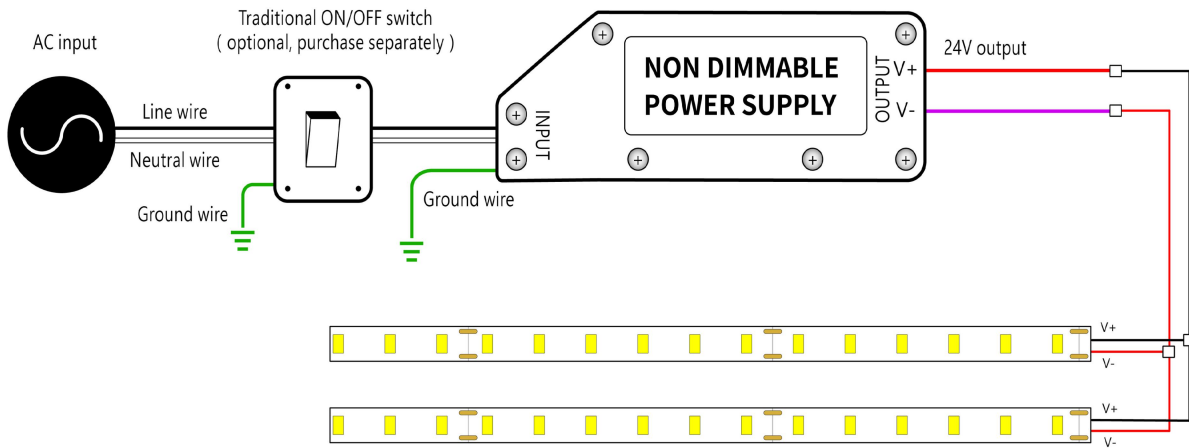
AERO TAPE ECO

Indoor · White



Wiring Diagram

Non Dimmable



Dimmable

