

# LINIO NEON 0606X TV

Outdoor · Vertical Bending · Field cuttable

# Beamever

## Features

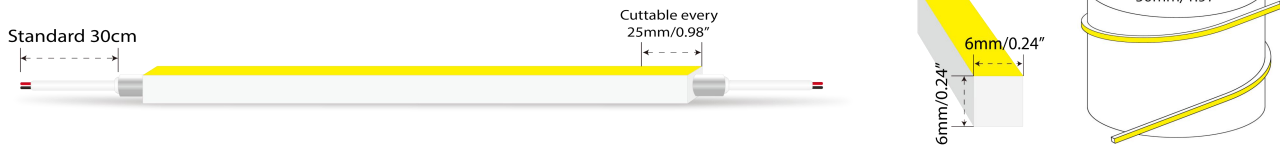
- Field cuttable & joinable
- Low voltage 24V DC
- All dimming protocols dimmable
- Ultra-thin profile, perfect for the designs you need
- IP65 rated for silicone end cap, IP54 rated for injected end cap
- UV stable without yellowing or cracking over time



Fixture type	
Project name	
Project phase	
Date	



## Dimension & Bending



## Physical

Dimensions	6mm x 6mm (width x height)
Bend Direction	Vertical bending
Bend Diameter	50mm
Cutting Interval	25mm
Field Cuttable	Yes
Housing Material	Dow Corning
Housing Technique	Co-extrusion
Body Color	White
Finish	Matte
Feed Entry	Front, side, bottom
Feed Length	Standard length 30cm
End Cap	Injected/silicone
Mounting	Clips or channels (rigid or bendable)
Storage Temperature	-25°C ~ 60°C (-13°F ~ 140°F)
Ambient Temperature	-25°C ~ 55°C (-13°F ~ 131°F)
Max. Production Length	20m

## Performance & Electrical

Voltage	24VDC (23.5Vmin, 24.5Vmax)
Beam Angle	110°
MacAdam	3 steps
Efficacy (lm/W)	79.3lm/W @4000K 6W
CRI	Ra > 90
Lumen Maintenance	> 36,000 hours
IP Rating	IP65 / IP54
Resistance	UV, solvent, saltwater, flame
Dimming	Triac, ELV, PWM, 0-10V, DMX, SPI
Warranty	5 years

## Certification & Safety

Certifications	UL, CE, REACH, RoHS, CB
Environment	Dry, damp or wet locations

Lumen/M	6W
■ 2700K	440
■ 3000K	465
■ 3500K	464
■ 4000K	476
■ 5700K	444
Max. Run Length (M)	5

# LINIO NEON 0606X TV

Outdoor · Vertical Bending · Field cuttable



## Order Code

Series	Temp./Color	Power	Feed Entry	Connector Wire	End Cap	Length (mm)
LN0606XTV	27=2700K 30=3000K 35=3500K 40=4000K 57=5700K	006=6W	FF=Front + Front BB=Bottom + Bottom SS=Side + Side FC=Front + Closed FB=Front + Bottom BF=Bottom+Front FLS=Front + Left Side FRS=Front + Right Side BC=Bottom + Closed BLS=Bottom + Left Side BRS=Bottom + Right Side LSC=Left Side + Closed RSC=Right Side + Closed	OW=Open wire 30cm MFCW=Male & female connector with 30cm white cable MFCB=Male & female connector with 30cm black cable	IJ=Injected end cap (IP54) * Factory made only SEC=Silicone end cap (IP65) * End caps are added by default	Min. - 25mm Max. run - 5000mm Cut Inc. - 25mm

Example: LN0606XTV-30-006-FF-OW-IJ-05000

\* Customizable—Contact Beamever representatives

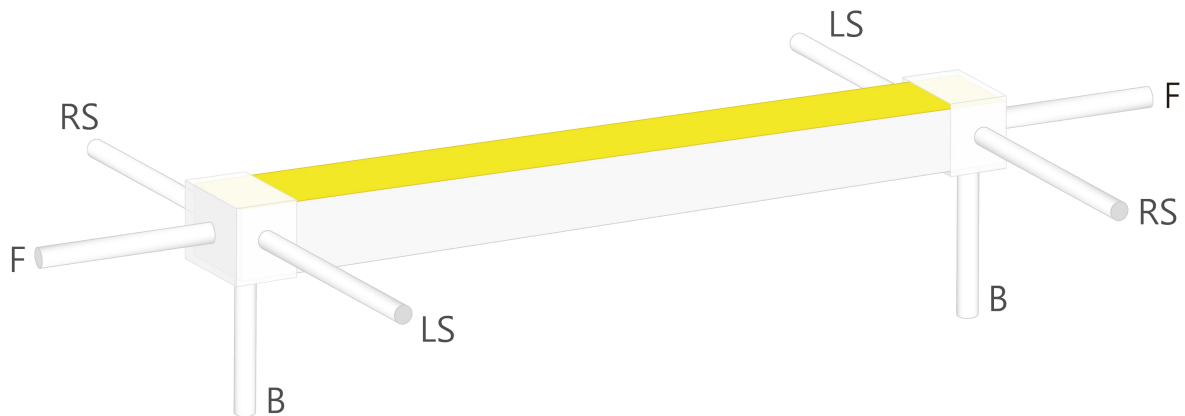
\*This product is not rated as submersible. Do not install in a location where water may pool or collect.

## Feed Entry Options

For injected end cap (IP54), factory made only



For silicone end cap (IP65)

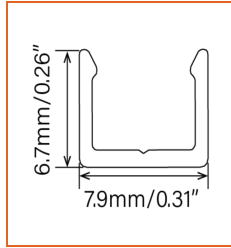
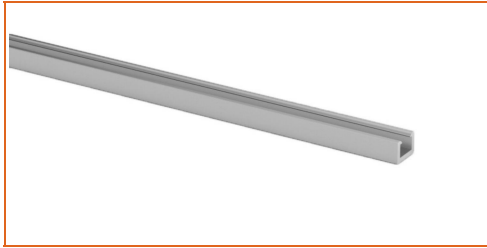


# LINIO NEON 0606X TV

Outdoor · Vertical Bending · Field cuttable

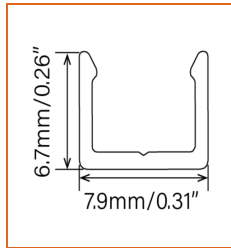


## Mounting Options



\* Standard length is 1m/pcs.

Name	Straight surface channel
Code	LN0606-SC
Material	Aluminum
Mounting style	Surface mounted
Length	3.28' (1m)
Width	0.31" (7.9mm)
Height	0.26" (6.7mm)
Internal width	/



\* Recommend use 4 mounting clip for 1m of neon.

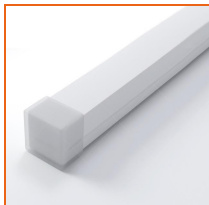
Name	Mounting clip
Code	LN0606-CL
Material	Aluminum
Mounting style	Surface mounted
Length	0.98' (25mm)
Width	0.31" (7.9mm)
Height	0.26" (6.7mm)
Internal Width	/

## Driver Options

Code	Max Load	Input	Output	Dimming	Environment	Size
XLG-150-24-A	150W	100-305VAC	24VDC	Non-Dim	Dry/Damp/IP67	180x63x35.5mm (L x W x H)
ELG-150-24B-3Y	150W	100-305VAC	24VDC	3 in 1 dimming	Dry/Damp/IP67	219x63x35.5mm (LxWxH)
ELG-150-24DA-3Y	150W	100-305VAC	24VDC	DALI control technology	Dry/Damp/IP67	219x63x35.5mm (L x W x H)
LPV-150-24	150W	180-305VAC	24VDC	Non-Dim	Dry/Damp/IP67	148x40x30mm (L x W x H)
LRS-150-24	150W	85-132V / 170-264VAC	24VDC	Non-Dim	Dry	99x97x30mm (L x W x H)
PWM-120-24	120W	90 ~ 305V / 127 ~ 431VAC	24VDC	3 in 1 dimming	Dry/Damp/IP67	191x63x37.5mm (LxWxH)

\* Please refer to the spec sheet of each power supply for more detailed information

## Accessories Options (Optional, purchase for extra)



Name Silicone closed end cap

Code LN0606-SEC-C

Closed silicone end cap



Name Silicone front end cap

Code LN0606-SEC-F-2P

Silicone end cap front entry with 30cm black cable, 2 pin



Name Silicone side end cap

Code LN0606-SEC-S-2P

Silicone end cap side entry with 30cm black cable, 2 pin



Name Silicone bottom end cap

Code LN0606-SEC-B-2P

Silicone end cap bottom entry with 30cm black cable, 2 pin

# LINIO NEON 0606X TV

Outdoor · Vertical Bending · Field cuttable



Name Male and female connectors

Code MFC-2P-67-W

Male and female connectors with 30cm white cable, 2 pin



Name Male and female connectors

Code MFC-2P-67-B

Male and female connectors with 30cm black cable, 2 pin



Name Extension connectors

Code ETC-2P-67-1M

Extension male and female connectors with 1m white cable, 2 pin



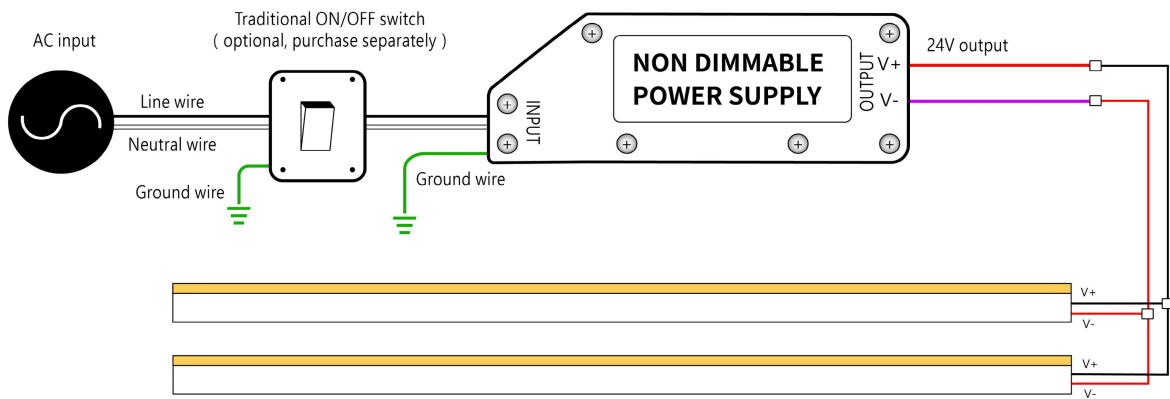
Name Extension connectors

Code ETC-2P-67-5M

Extension male and female connectors with 5m white cable, 2 pin

## Wiring Diagram

### Non Dimmable



### Dimmable

