

LINIO NEON 0612X SV

Outdoor · Horizontal Bending · Field cuttable

Beamever

Features

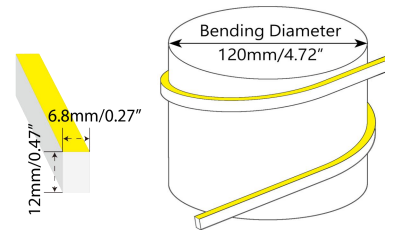
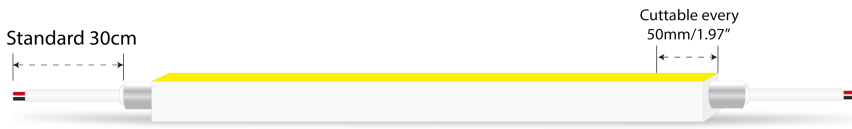
- Field cuttable & joinable
- Low voltage 24V DC
- All dimming protocols dimmable
- Max run length up to 13m from single power feed
- IP67 rated, ideal for indoor and outdoor uses
- UV stable without yellowing or cracking over time



Fixture type	
Project name	
Project phase	
Date	



Dimension & Bending



Physical

Dimensions	6.8mm x 12mm (width x height)
Bend Direction	Horizontal bending
Bend Diameter	120mm
Cutting Interval	50mm
Field Cuttable	Yes
Housing Material	Dow Corning
Housing Technique	Co-extrusion
Body Color	White
Finish	Matte
Feed Entry	Front, side, bottom
Feed Length	Standard length 30cm
End Cap	Injected/silicone
Mounting	Clips or channels (rigid or bendable)
Storage Temperature	-25°C~60°C (-13°F~140°F)
Ambient Temperature	-25°C~45°C (-13°F~113°F)
Max. Production Length	30m

Performance & Electrical

Voltage	24VDC (23.5Vmin, 24.5Vmax)
Beam Angle	110°
MacAdam	2 steps
Efficacy (lm/W)	39.7lm/W @3000K 9.6W
CRI	Ra>90
Lumen Maintenance	> 54,000 hours
IP Rating	IP67
Resistance	UV, solvent, saltwater, flame
Dimming	Triac, ELV, PWM, 0-10V, DMX, SPI
Warranty	5 years

Lumen/M

9.6W

■ 2200K	316
■ 2700K	357
■ 3000K	381
■ 3500K	381
■ 4000K	368
■ 5300K	357
Max. Run Length (M)	13

Certification & Safety

Certifications	UL, CE, REACH, RoHS, CB
Environment	Dry, damp or wet locations

LINIO NEON 0612X SV

Outdoor · Horizontal Bending · Field cuttable



Order Code

Series	Temp./Color	Power	Feed Entry	Connector Wire	End Cap	Length (mm)
LN0612XSV	22=2200K 27=2700K 30=3000K 35=3500K 40=4000K 53=5300K	096=9.6W	FF=Front + Front BB=Bottom + Bottom SS=Side + Side FC=Front + Closed FB=Front + Bottom BF=Bottom+Front FLS=Front + Left Side FRS=Front + Right Side BC=Bottom + Closed BLS=Bottom + Left Side BRS=Bottom + Right Side LSC=Left Side + Closed RSC=Right Side + Closed	OW=Open wire 30cm MFCW=Male & female connector with 30cm white cable MFCB=Male & female connector with 30cm black cable	IJ=Injected end cap (IP67) * Factory made only SEC=Silicone end cap (IP67) * End caps are added by default	Min. - 50mm Max. run - 13000mm Cut Inc. - 50mm

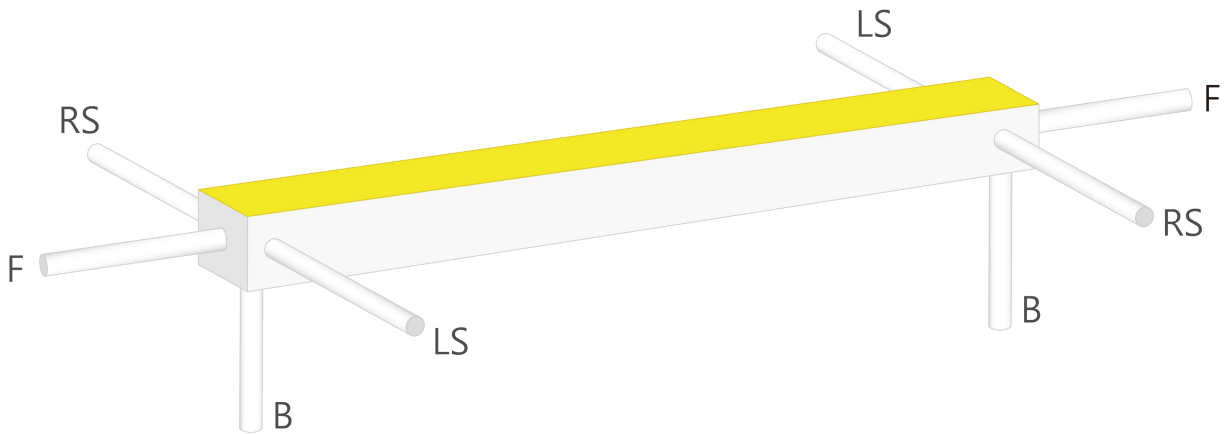
Example: LN0612XSV-30-096-FF-OW-IJ-01000

* Customizable—Contact Beamever representatives

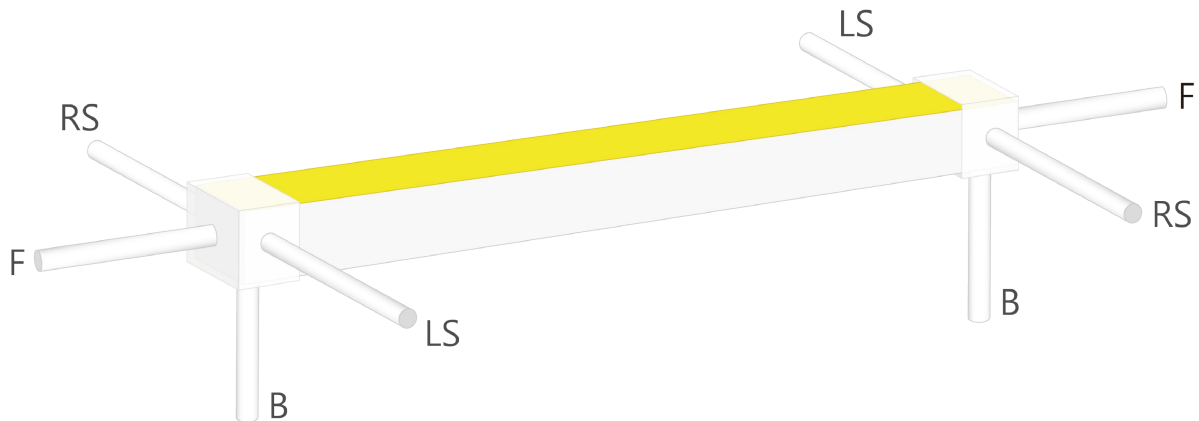
* Do not install in an environment that is permanently flooded with water or high in humidity, as damage to the neon will occur.

Feed Entry Options

For injected end cap (IP67), factory made only



For silicone end cap (IP67)

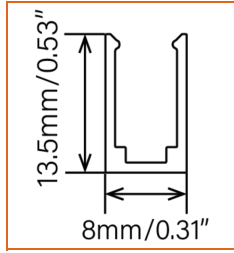
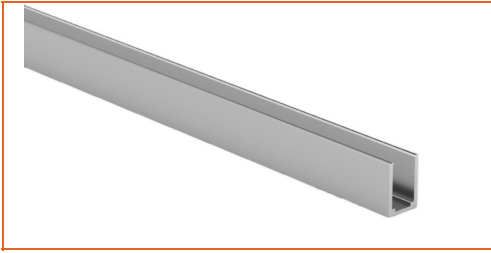


LINIO NEON 0612X SV

Outdoor · Horizontal Bending · Field cuttable

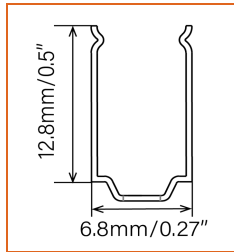


Mounting Options



* Standard length is 1m/pcs.

Name	Straight surface channel
Code	LN0612-SC
Material	Aluminum
Mounting style	Surface mounted
Length	1m
Width	8mm
Height	13.5mm
Internal width	/



* Recommend use 4 mounting clip for 1m of neon.

Name	Mounting clip
Code	LN0612-CL
Material	Stainless Steel
Mounting style	Surface mounted
Length	15mm
Width	6.8mm
Height	12.8mm
Internal Width	/

Driver Options

Code	Max Load	Input	Output	Dimming	Environment	Size
XLG-150-24-A	150W	100-305VAC	24VDC	Non-Dim	Dry/Damp/IP67	180x63x35.5mm (L x W x H)
ELG-150-24B-3Y	150W	100-305VAC	24VDC	3 in 1 dimming	Dry/Damp/IP67	219x63x35.5mm (LxWxH)
ELG-150-24DA-3Y	150W	100-305VAC	24VDC	DALI control technology	Dry/Damp/IP67	219x63x35.5mm (L x W x H)
LPV-150-24	150W	180-305VAC	24VDC	Non-Dim	Dry/Damp/IP67	148x40x30mm (L x W x H)
LRS-150-24	150W	85-132V / 170-264VAC	24VDC	Non-Dim	Dry	99x97x30mm (L x W x H)
PWM-120-24	120W	90 ~ 305V / 127 ~ 431VAC	24VDC	3 in 1 dimming	Dry/Damp/IP67	191x63x37.5mm (LxWxH)

* Please refer to the spec sheet of each power supply for more detailed information

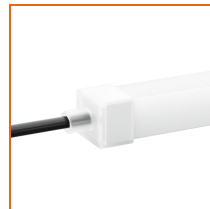
Accessories Options (Optional, purchase for extra)



Name Silicone closed end cap

Code LN0612-SEC-C

Closed silicone end cap



Name Silicone front end cap

Code LN0612-SEC-F-2P

Silicone end cap front entry with 30cm black cable, 2 pin



Name Silicone side end cap

Code LN0612-SEC-S-2P

Silicone end cap side entry with 30cm black cable, 2 pin



Name Silicone bottom end cap

Code LN0612-SEC-B-2P

Silicone end cap bottom entry with 30cm black cable, 2 pin

LINIO NEON 0612X SV

Outdoor · Horizontal Bending · Field cuttable



Name Male and female connectors

Code MFC-2P-67-W

Male and female connectors with 30cm white cable, 2 pin



Name Male and female connectors

Code MFC-2P-67-B

Male and female connectors with 30cm black cable, 2 pin



Name Extension connectors

Code ETC-2P-67-1M

Extension Male and female connectors with 1m white cable, 2 pin



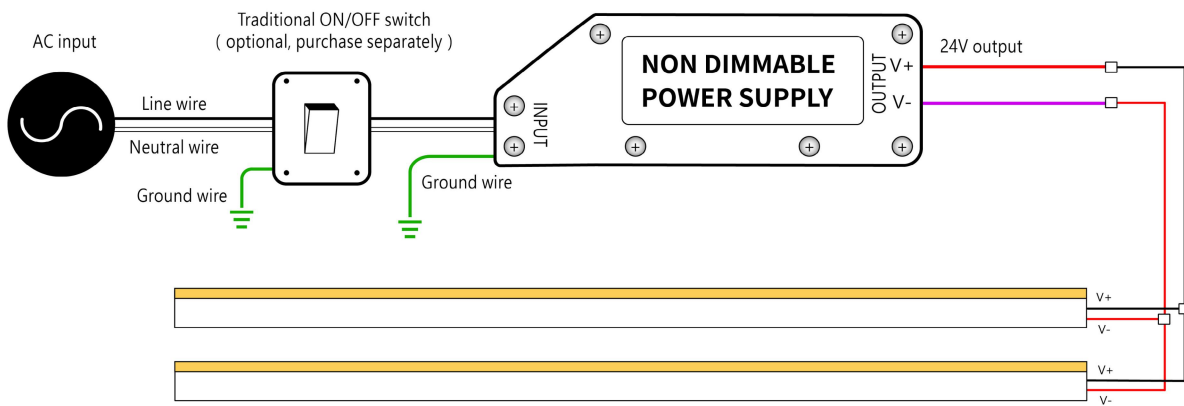
Name Extension connectors

Code ETC-2P-67-5M

Extension Male and female connectors with 5m white cable, 2 pin

Wiring Diagram

Non Dimmable



Dimmable

