

LINIO NEON 1617 SV PIXEL RGBW

Outdoor · Pixel RGBW · Horizontal Bending

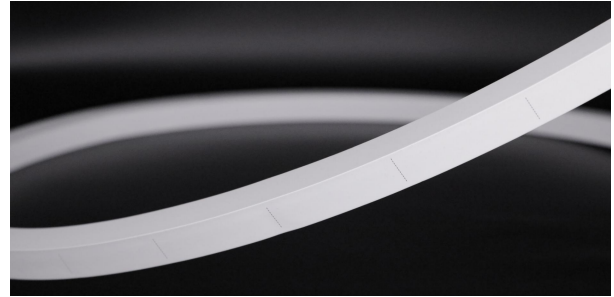
Beamever

Features

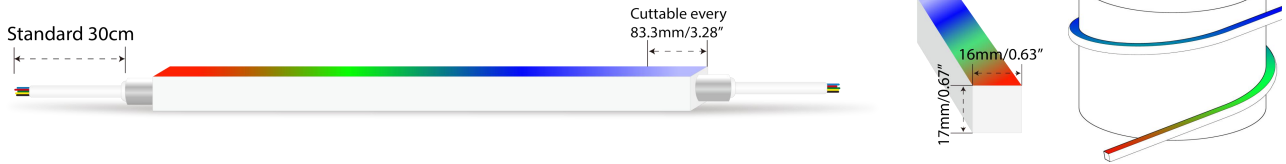
- Factory assembly
- Low voltage 24V DC
- Color chasing effects
- IP67 rated, ideal for indoor and outdoor uses
- UV stable without yellowing or cracking over time
- 5 years warranty



Fixture type	
Project name	
Project phase	
Date	



Dimension & Bending



Physical

Dimensions	16mm x 17mm (width x height)
Bend Direction	Horizontal bending
Bend Diameter	300mm
Cutting Interval	83.3mm
Field Cuttable	Yes
Housing Material	Dow Corning
Housing Technique	Co-extrusion
Body Color	White
Finish	Matte
Feed Entry	Front, side, bottom
Feed Length	Standard length 30cm
End Cap	Injected/silicone/mechanical
Mounting	Clips or channels (rigid or bendable)
Storage Temperature	-25~60°C (-13~140°F)
Ambient Temperature	-25~45°C (-13~113°F)
Max. Production Length	30m

Performance & Electrical

Voltage	24VDC (23.5Vmin, 24.5Vmax)
Beam Angle	110°
Efficacy (lm/W)	20.9lm/W @RGB+W3000K
Pixel/M	12
Lumen Maintenance	> 30,000 hours
IP Rating	IP67
Resistance	UV, solvent, saltwater, flame
Dimming	SPI
IC Type	SM16704PB
Warranty	5 years

Certification & Safety

Certifications	UL, CE, REACH, RoHS, CB
Environment	Dry, damp or wet locations

Lumen/m	22W
■ R	84
■ G	164
■ B	41
■ W27	199
■ W30	208
■ W40	218
■ RGBW30	459
Max. Run Length (M)	10

LINIO NEON 1617 SV PIXEL RGBW

Outdoor · Pixel RGBW · Horizontal Bending



Order Code

Series	Temp./Color	Power	Feed Entry	Connector Wire	End Cap	Length (mm)
LN1617SV	PRGBW30 (3000K)	022=22W	FF=Front + Front BB=Bottom + Bottom SS=Side + Side FC=Front + Closed FB=Front + Bottom BF=Bottom+Front FLS=Front + Left Side FRS=Front + Right Side BC=Bottom + Closed BLS=Bottom + Left Side BRS=Bottom + Right Side LSC=Left Side + Closed RSC=Right Side + Closed	OW=Open wire 30cm MFCW=Male & female connector with 30cm white cable MFCB=Male & female connector with 30cm balck cable	IJ=Injected end cap (IP67) * Factory made only SEC=Silicone end cap (IP67) MEC=Mechanical end cap (IP67) * End caps are added by default	Min. - 83.3mm Max. run - 10000mm Cut Inc. - 83.3mm

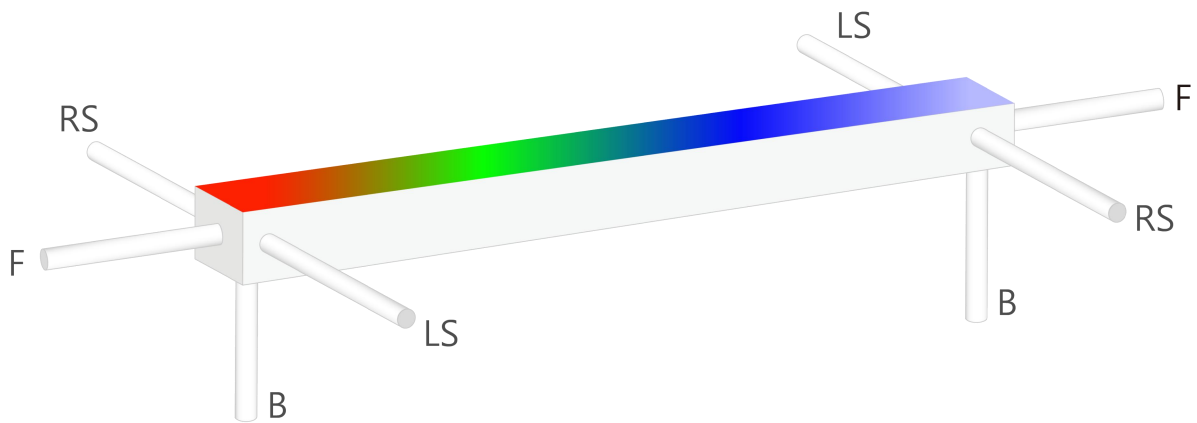
Example: LN1617SV-PRGBW30-022-FF-OW-IJ-01000

* Customizable—Contact Beamever representatives

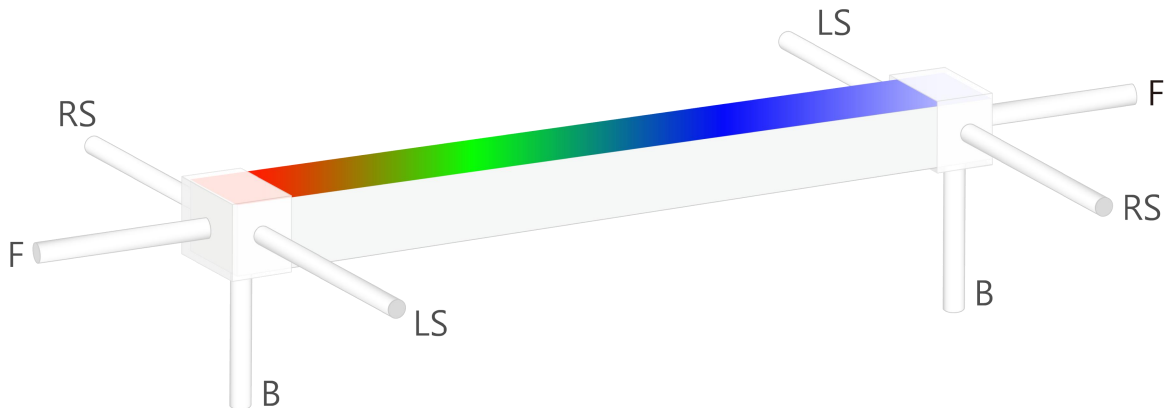
* Do not install in an environment that is permanently flooded with water or high in humidity, as damage to the neon will occur.

Feed Entry Options

For injected end cap (IP67), factory made only



For silicone end cap / mechanical end cap (IP67)

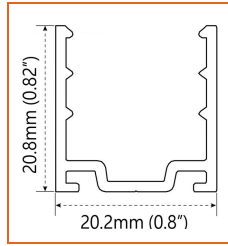


LINIO NEON 1617 SV PIXEL RGBW

Outdoor · Pixel RGBW · Horizontal Bending

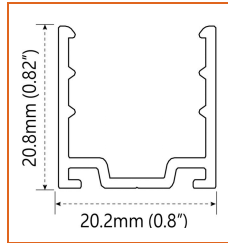
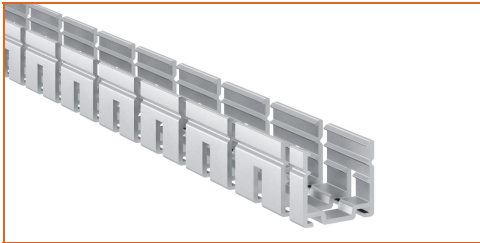


Mounting Options



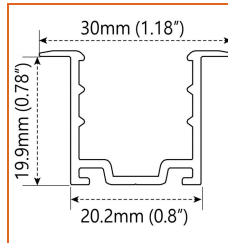
* Standard length is 1m/pcs.

Name	Straight surface channel
Code	LN1617-SC
Material	Aluminum
Mounting style	Surface mounted
Length	1m
Width	20.2mm
Height	20.8mm
Internal width	/



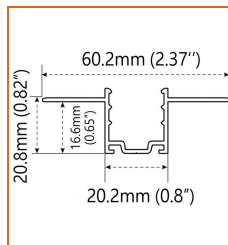
* Standard length is 1m/pcs.

Name	Bendable surface channel
Code	LN1617-BC
Material	Aluminum
Mounting style	Surface mounted
Length	1m
Width	20.2mm
Height	20.8mm
Internal Width	/



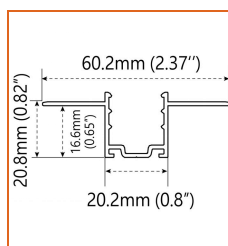
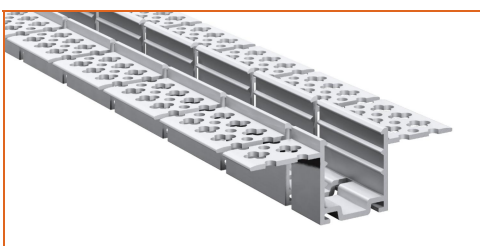
* Standard length is 1m/pcs.

Name	Straight recessed channel
Code	LN1617-RSC
Material	Aluminum
Mounting style	Recessed mounted
Length	1m
Width	30mm
Height	19.9mm
Internal width	/



* Standard length is 1m/pcs.

Name	Mud-in channel
Code	LN1617-MC
Material	Aluminum
Mounting style	Mud-in mounted
Length	1m
Width	60.2mm
Height	16.6mm
Internal Width	/

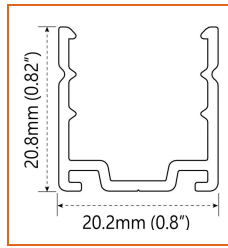
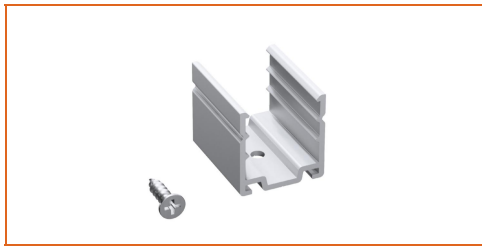


* Standard length is 1m/pcs.

Name	Bendable mud-in channel
Code	LN1617-BMC
Material	Aluminum
Mounting style	Mud-in mounted
Length	1m
Width	60.2mm
Height	16.6mm
Internal Width	/

LINIO NEON 1617 SV PIXEL RGBW

Outdoor · Pixel RGBW · Horizontal Bending



Name	Mounting clip
Code	LN1617-CL
Material	Aluminum
Mounting style	Surface mounted
Length	25mm
Width	20.2mm
Height	20.8mm
Internal Width	/

* Recommend use 4 mounting clip for 1m of neon.

Driver Options

* Please refer to the spec sheet of each power supply for more detailed information

Code	Max Load	Input	Output	Dimming	Environment	Size
XLG-150-24-A	150W	100-305VAC	24VDC	Non-Dim	Dry/Damp/IP67	180x63x35.5mm (L x W x H)
LPV-150-24	150W	180-305VAC	24VDC	Non-Dim	Dry/Damp/IP67	148x40x30mm (L x W x H)
LRS-150-24	150W	85-132V / 170-264VAC	24VDC	Non-Dim	Dry	99x97x30mm (L x W x H)

Controllers Options

Type	Code	Description	Environment	Size
Controllers	SPI-16S	Rich dynamic effects, Max. 10A current output, match with RF remote control M16S, CE, RoHS certified	Indoor	135×30×20mm (L x W x H)

Accessories Options (Optional, purchase for extra)



Name Silicone closed end cap

Code LN1617-SEC-C

Closed silicone end cap



Name Silicone front end cap

Code LN1617-SEC-F-3P

Silicone end cap front entry with 30cm black cable, 3 pin



Name Silicone side end cap

Code LN1617-SEC-S-3P

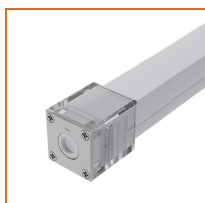
Silicone end cap side entry with 30cm black cable, 3 pin



Name Silicone bottom end cap

Code LN1617-SEC-B-3P

Silicone end cap bottom entry with 30cm black cable, 3 pin



Name Mechanical end cap

Code LN1617-MEC-C

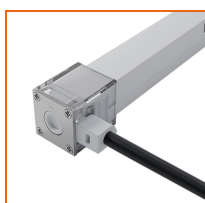
Mechanical closed end cap with screws



Name Mechanical end cap

Code LN1617-MEC-F-3P

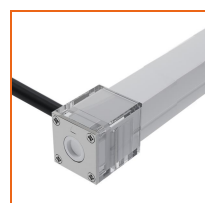
Mechanical end cap with screws, front entry with 30cm black cable, 3 pin



Name Mechanical end cap

Code LN1617-MEC-LS-3P

Mechanical end cap with screws, left side entry with 30cm black cable, 3 pin



Name Mechanical end cap

Code LN1617-MEC-RS-3P

Mechanical end cap with screws, right side entry with 30cm black cable, 3 pin

LINIO NEON 1617 SV PIXEL RGBW

Outdoor · Pixel RGBW · Horizontal Bending



Name Mechanical end cap
Code LN1617-MEC-B-3P
Mechanical end cap with screws, bottom entry with 30cm black cable, 3 pin



Name Jumper connector
Code LN1617-JC-3P-67
Jumper connector with 7cm white cable, 3 pin, IP67



Name Male and female connectors
Code MFC-3P-67-W
Male and female connectors with 30cm white cable, 3 pin



Name Male and female connectors
Code MFC-3P-67-B
Male and female connectors with 30cm black cable, 3 pin



Name Extension connectors
Code ETC-3P-67-1M
Extension Male and female connectors with 1m white cable, 3 pin



Name Extension connectors
Code ETC-3P-67-5M
Extension Male and female connectors with 5m white cable, 3 pin



Name IP67 Signal connectors
Code SC-3P-67
Male connector and female signal connector with 20cm cable, 3 pin



Name IP67 T connector
Code TC-3P-67
Male connector and female T-shaped connector with 20cm cable, 3 pin



Name Silicone glue
Code SG
Silicone glue

Wiring Diagram

Dimmable

