

# LINIO NEON 0408X SV TW

Outdoor · Tunable White · Field Cuttable

# Beamever

## Features

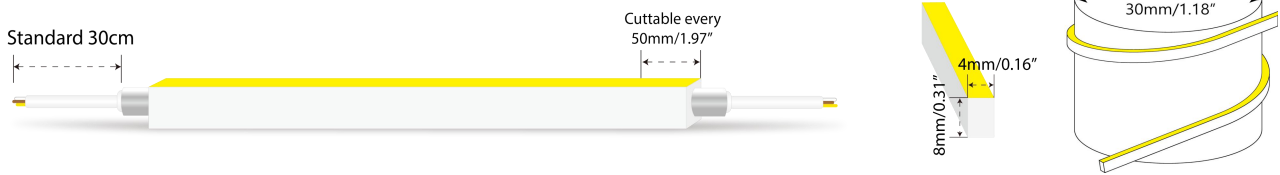
- Field cuttable & joinable
- Low voltage 24V DC
- Tunable white, CCT changing from 2700K to 6000K
- IP65 rated for silicone end cap, IP54 rated for injected end cap
- UV stable without yellowing or cracking over time
- 5 years warranty



Fixture type	
Project name	
Project phase	
Date	



## Dimension & Bending



## Physical

Dimensions	4mm x 8mm (width x height)
Bend Direction	Horizontal bending
Bend Diameter	30mm
Cutting Interval	50mm
Field Cuttable	Yes
Housing Material	Dow Corning
Housing Technique	Co-extrusion
Body Color	White
Finish	Matte
Feed Entry	Front, side, bottom
Feed Length	Standard length 30cm
End Cap	Injected/silicone
Mounting	Clips or channels (rigid or bendable)
Storage Temperature	-25~60°C (-13~140°F)
Ambient Temperature	-25~55°C (-13~131°F)
Max. Production Length	20m

## Performance & Electrical

Voltage	24VDC (23.5Vmin, 24.5Vmax)
Beam Angle	110°
MacAdam	2 steps
Efficacy (lm/W)	27lm/W @2700K+6000K
CRI	Ra>90
Lumen Maintenance	> 54,000 hours
IP Rating	IP65 / IP54
Resistance	UV, solvent, saltwater, flame
Dimming	Triac, ELV, PWM, 0-10V, DMX, SPI
Warranty	5 years

## Certification & Safety

Certifications	UL, CE, REACH, RoHS, CB
Environment	Dry, damp or wet locations

Lumen/M	6W
■ 2700K	160
■ 6000K	169
■ 2700K+6000K	162
Max. Run Length (M)	5

# LINIO NEON 0408X SV TW

Outdoor · Tunable White · Field Cuttable



## Order Code

Series	Temp./Color	Power	Feed Entry	Connector Wire	End Cap	Length (mm)
LN0408XSV	2753=2700K+60 00K	006=6W	<b>FF</b> =Front + Front <b>BB</b> =Bottom + Bottom <b>SS</b> =Side + Side <b>FC</b> =Front + Closed <b>FB</b> =Front + Bottom <b>BF</b> =Bottom+Front <b>FLS</b> =Front + Left Side <b>FRS</b> =Front + Right Side <b>BC</b> =Bottom + Closed <b>BLS</b> =Bottom + Left Side <b>BRS</b> =Bottom + Right Side <b>LSC</b> =Left Side + Closed <b>RSC</b> =Right Side + Closed	<b>OW</b> =Open wire 30cm <b>MFCW</b> =Male & female connector with 30cm white cable <b>MFCB</b> =Male & female connector with 30cm black cable	<b>IJ</b> =Injected end cap (IP54) * Factory made only <b>SEC</b> =Silicone end cap (IP65) * End caps are added by default	Min. - 50mm Max. run - 5000mm Cut Inc. - 50mm

Example: LN0408XSV-2760-006-FF-OW-IJ-01000

\* Customizable—Contact Beamever representatives

\* Do not install in an environment that is permanently flooded with water or high in humidity, as damage to the neon will occur.

## Feed Entry Options

For injected end cap (IP54), factory made only



For silicone end cap (IP65)

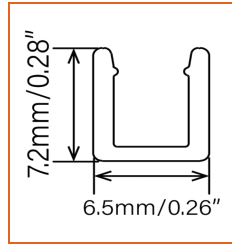
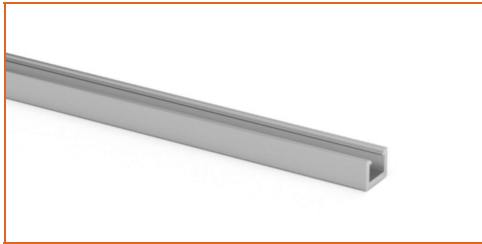


# LINIO NEON 0408X SV TW

Outdoor · Tunable White · Field Cuttable

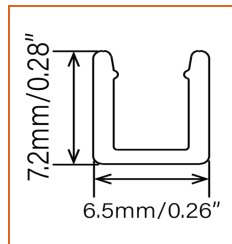


## Mounting Options



\* Standard length is 1m/pcs.

Name	Straight surface channel
Code	LN0408-SC
Material	Aluminum
Mounting style	Surface mounted
Length	1m
Width	6.5mm
Height	7.2mm
Internal width	/



\* Recommend use 4 mounting clips for 1m of neon.

Name	Mounting clip
Code	LN0408-CL
Material	Stainless Steel
Mounting style	Surface mounted
Length	15mm
Width	6.5mm
Height	7.2mm
Internal Width	/

## Driver Options

\* Please refer to the spec sheet of each power supply for more detailed information

Code	Max Load	Input	Output	Dimming	Environment	Size
XLG-150-24-A	150W	100-305VAC	24VDC	Non-Dim	Dry/Damp/IP67	180x63x35.5mm (L x W x H)
ELG-150-24B-3Y	150W	100-305VAC	24VDC	3 in 1 dimming	Dry/Damp/IP67	219x63x35.5mm (LxWxH)
ELG-150-24DA-3Y	150W	100-305VAC	24VDC	DALI control technology	Dry/Damp/IP67	219x63x35.5mm (L x W x H)
LM-100-24-U2A2	100W	120-277VAC	24VDC	0-10V (1-10V/10V PWM/RX, Push DIM/CCT)	Dry	352x43x30mm (L x W x H)
LRS-150-24	150W	85-132V / 170-264VAC	24VDC	Non-Dim	Dry	99x97x30mm (L x W x H)
PWM-120-24	120W	90 ~ 305V / 127 ~ 431VAC	24VDC	3 in 1 dimming	Dry/Damp/IP67	191x63x37.5mm (LxWxH)

## DMX Decoders & Controllers Options

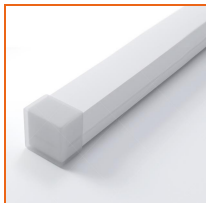
Type	Code	Description	Environment	Size
DMX Decoders	LT-903	3 channels output, Max. 8A current per channel, up to 576W output power	Indoor	122x110x3mm (L x W x H)
Controllers	M2+M3-3A	3 channels output, Max. 3A current per channel, up to 216W output power	Indoor	135x30x20mm (L x W x H)
Controllers	GA2	512 DMX channels, 4 touch sensitive buttons (on/off, mode, previous, next)	Indoor	87x110x10mm (L x W x H)
Controllers	CW4	1024 DMX channels, 6 SECne buttons and a color wheel, ideal for hotels, homes and public environments	Indoor	145x107x10mm (L x W x H)

# LINIO NEON 0408X SV TW

Outdoor · Tunable White · Field Cuttable



## Accessories Options (Optional, purchase for extra)



Name Silicone closed end cap

Code LN0408-SEC-C

Closed silicone end cap



Name Silicone front end cap

Code LN0408-SEC-F-3P

Silicone end cap front entry with 30cm black cable, 3 pin



Name Male and female connectors

Code MFC-3P-67-W

Male and female connectors with 30cm white cable, 3 pin



Name Male and female connectors

Code MFC-3P-67-B

Male and female connectors with 30cm black cable, 3 pin



Name Extension connectors

Code ETC-3P-67-1M

Extension male and female connectors with 1m white cable, 3 pin



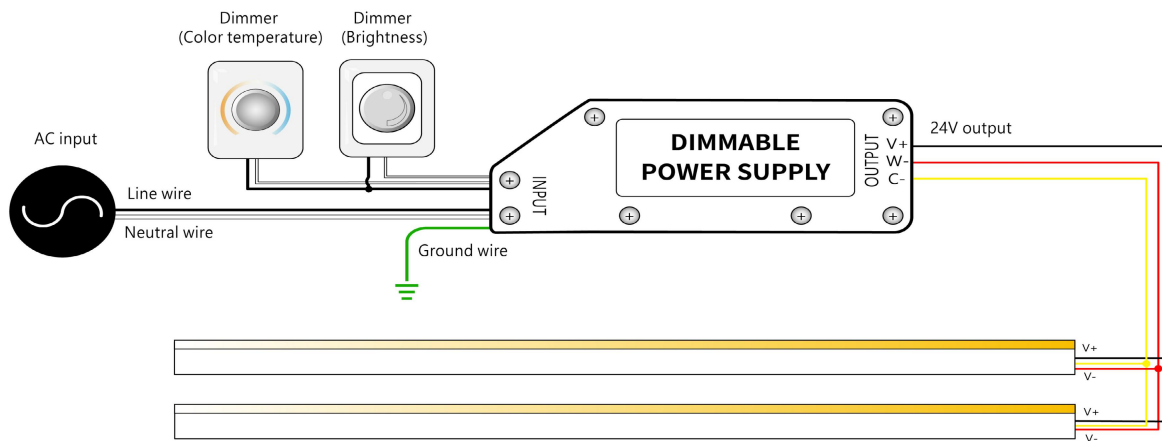
Name Extension connectors

Code ETC-3P-67-5M

Extension male and female connectors with 5m white cable, 3 pin

## Wiring Diagram

### Dimmable



\* Dimmers need to be purchased separately.