

LINIO NEON 0612X SV TW

Outdoor · Tunable White · Field Cuttable

Beamever

Features

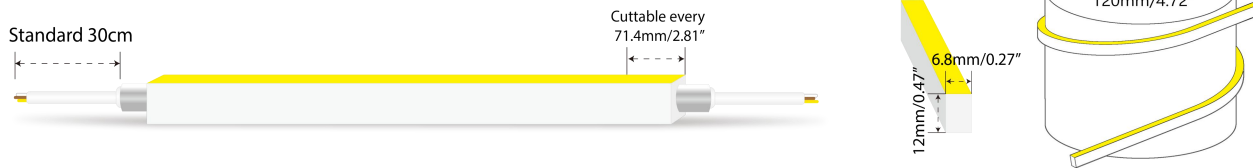
- Field cuttable & joinable
- Low voltage 24V DC
- Tunable white, CCT changing from 2700K to 5300K
- IP67 rated, ideal for indoor and outdoor uses
- UV stable without yellowing or cracking over time
- 5 years warranty



Fixture type	
Project name	
Project phase	
Date	



Dimension & Bending



Physical

Dimensions	6.8mm x 12mm (width x height)
Bend Direction	Horizontal bending
Bend Diameter	120mm
Cutting Interval	71.4mm
Field Cuttable	Yes
Housing Material	Dow Corning
Housing Technique	Co-extrusion
Body Color	White
Finish	Matte
Feed Entry	Front, side, bottom
Feed Length	Standard length 30cm
End Cap	Injected/silicone
Mounting	Clips or channels (rigid or bendable)
Storage Temperature	-25~60°C (-13~140°F)
Ambient Temperature	-25~45°C (-13~113°F)
Max. Production Length	30m

Performance & Electrical

Voltage	24VDC (23.5Vmin, 24.5Vmax)
Beam Angle	110°
MacAdam	2 steps
Efficacy (lm/W)	39.6lm/W @2700K+5300K
CRI	Ra>90
Lumen Maintenance	> 54,000 hours
IP Rating	IP67
Resistance	UV, solvent, saltwater, flame
Dimming	Triac, ELV, PWM, 0-10V, DMX, SPI
Warranty	5 years

Certification & Safety

Certifications	UL, CE, REACH, RoHS, CB
Environment	Dry, damp or wet locations

Lumen/M	13W
■ 2700K	250
■ 5300K	257
■ 2700K+5300K	515
Max. Run Length (M)	10

LINIO NEON 0612X SV TW

Outdoor · Tunable White · Field Cuttable



Order Code

Series	Temp./Color	Power	Feed Entry	Connector Wire	End Cap	Length (mm)
LN0612XSV	2753=2700K+5300K	013=13W	FF=Front + Front BB=Bottom + Bottom SS=Side + Side FC=Front + Closed FB=Front + Bottom BF=Bottom+Front FLS=Front + Left Side FRS=Front + Right Side BC=Bottom + Closed BLS=Bottom + Left Side BRS=Bottom + Right Side LSC=Left Side + Closed RSC=Right Side + Closed	OW=Open wire 30cm MFCW=Male & female connector with 30cm white cable MFCB=Male & female connector with 30cm black cable	IJ=Injected end cap (IP67) * Factory made only SEC=Silicone end cap (IP67) * End caps are added by default	Min. - 71.4mm Max. run - 10000mm Cut Inc. - 71.4mm

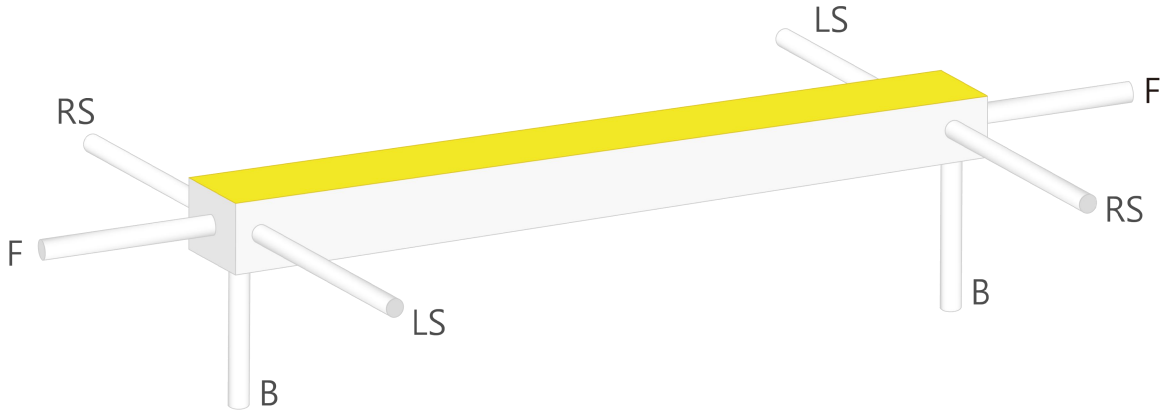
Example: LN0612XSV-2753-013-FF-OW-IJ-01000

* Customizable—Contact Beamever representatives

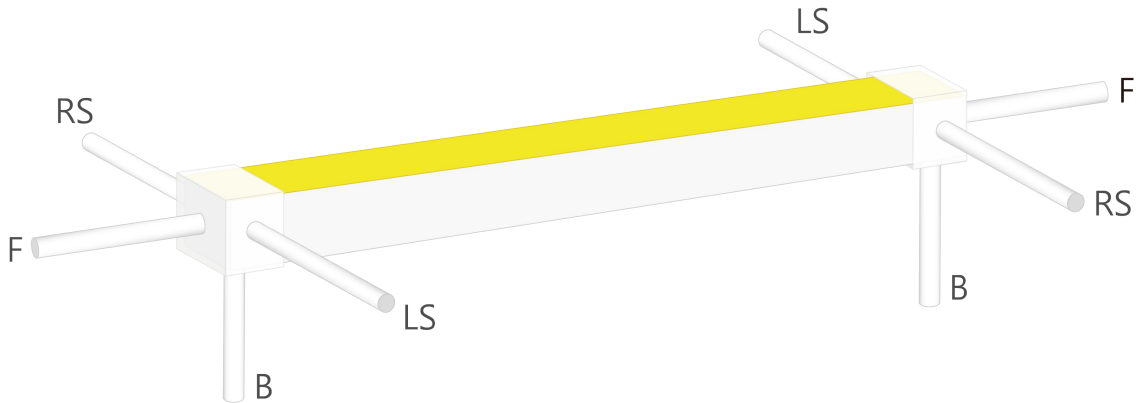
* Do not install in an environment that is permanently flooded with water or high in humidity, as damage to the neon will occur.

Feed Entry Options

For injected end cap (IP67), factory made only



For silicone end cap (IP67)

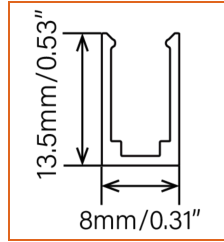
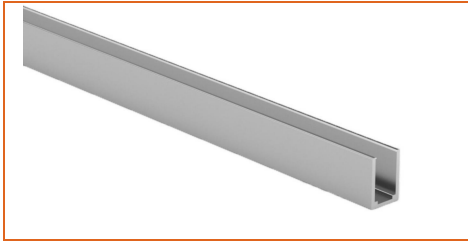


LINIO NEON 0612X SV TW

Outdoor · Tunable White · Field Cuttable

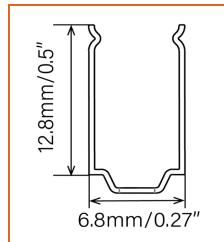


Mounting Options



* Standard length is 1m/pcs.

Name	Straight aluminum channel
Code	LN0612-SC
Material	Aluminum
Mounting style	Surface mounted
Length	3.28' (1m)
Width	0.31" (8mm)
Height	0.53" (13.5mm)
Internal width	/



* Recommend use 4 mounting clips for 1m of neon.

Name	Mounting clip
Code	LN0612-BC
Material	Stainless Steel
Mounting style	Surface mounted
Length	0.59" (15m)
Width	0.27" (6.8mm)
Height	0.5" (12.8mm)
Internal Width	/

Driver Options

* Please refer to the spec sheet of each power supply for more detailed information

Code	Max Load	Input	Output	Dimming	Environment	Size
XLG-150-24-A	150W	100-305VAC	24VDC	Non-Dim	Dry/Damp/IP67	180x63x35.5mm (L x W x H)
ELG-150-24B-3Y	150W	100-305VAC	24VDC	3 in 1 dimming	Dry/Damp/IP67	219x63x35.5mm (LxWxH)
ELG-150-24DA-3Y	150W	100-305VAC	24VDC	DALI control technology	Dry/Damp/IP67	219x63x35.5mm (L x W x H)
LM-100-24-U2A2	100W	120-277VAC	24VDC	0-10V (1-10V/10V PWM/RX, Push DIM/CCT)	Dry	352x43x30mm (L x W x H)
LRS-150-24	150W	85-132V / 170-264VAC	24VDC	Non-Dim	Dry	99x97x30mm (L x W x H)
PWM-120-24	120W	90 ~ 305V / 127 ~ 431VAC	24VDC	3 in 1 dimming	Dry/Damp/IP67	191x63x37.5mm (LxWxH)

DMX Decoders & Controllers Options

Type	Code	Description	Environment	Size
DMX Decoders	LT-903	3 channels output, Max. 8A current per channel, up to 576W output power	Indoor	122x110x3mm (L x W x H)
Controllers	M2+M3-3A	3 channels output, Max. 3A current per channel, up to 216W output power	Indoor	135x30x20mm (L x W x H)
Controllers	GA2	512 DMX channels, 4 touch sensitive buttons (on/off, mode, previous, next)	Indoor	87x110x10mm (L x W x H)
Controllers	CW4	1024 DMX channels, 6 SECne buttons and a color wheel, ideal for hotels, homes and public environments	Indoor	145x107x10mm (L x W x H)

LINIO NEON 0612X SV TW

Outdoor · Tunable White · Field Cuttable



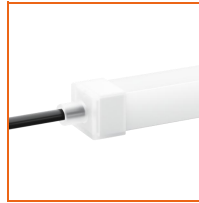
Accessories Options (Optional, purchase for extra)



Name Silicone closed end cap

Code LN0612-SEC-C

Closed silicone end cap



Name Silicone front end cap

Code LN0612-SEC-F-3P

Silicone end cap front entry with 30cm black cable, 3 pin



Name Silicone side end cap

Code LN0612-SEC-S-3P

Silicone end cap side entry with 30cm black cable, 3 pin



Name Silicone bottom end cap

Code LN0612-SEC-B-3P

Silicone end cap bottom entry with 30cm black cable, 3 pin



Name Male and female connectors

Code MFC-3P-67-B

Male and female connectors with 30cm black cable, 3 pin



Name Male and female connectors

Code MFC-3P-67-W

Male and female connectors with 30cm white cable, 3 pin



Name Extension connectors

Code ETC-3P-67-1M

Extension Male and female connectors with 1m white cable, 3 pin



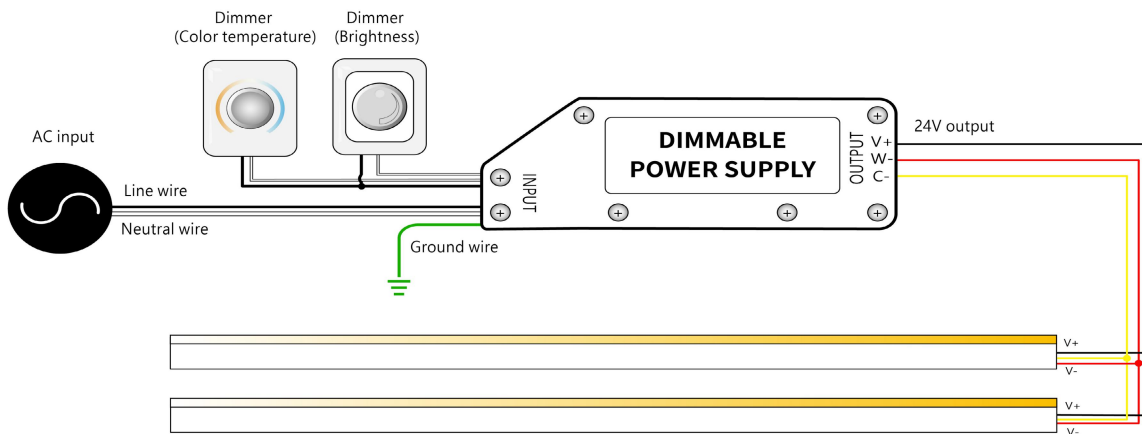
Name Extension connectors

Code ETC-3P-67-5M

Extension Male and female connectors with 5m white cable, 3 pin

Wiring Diagram

Dimmable



* Dimmers need to be purchased separately.