

# LINIO NEON 1617 TV TW

Outdoor · Tunable White · Vertical Bending

# Beamever

## Features

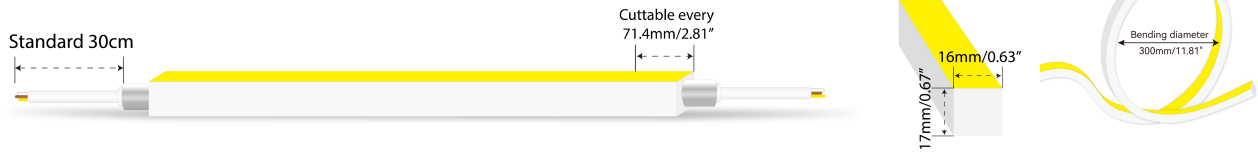
- Factory assembly
- Low voltage 24V DC
- Tunable white, CCT changing from 2700K to 5300K
- IP67 rated, ideal for indoor and outdoor uses
- UV stable without yellowing or cracking over time
- 5 years warranty



Fixture type	
Project name	
Project phase	
Date	



## Dimension & Bending



## Physical

Dimensions	16mm x 17mm (width x height)
Bend Direction	Vertical bending
Bend Diameter	300mm
Cutting Interval	71.4mm
Field Cuttable	Yes
Housing Material	Dow Corning
Housing Technique	Co-extrusion
Body Color	White
Finish	Matte
Feed Entry	Front, side, bottom
Feed Length	Standard length 30cm
End Cap	Injected/silicone/mechanical
Mounting	Clips or channels (rigid or bendable)
Storage Temperature	-25~60°C (-13~140°F)
Ambient Temperature	-25~45°C (-13~113°F)
Max. Production Length	30m

## Performance & Electrical

Voltage	24VDC (23.5Vmin, 24.5Vmax)
Beam Angle	110°
MacAdam	2 steps
Efficacy (lm/W)	73.2lm/W @2700K+5300K
CRI	>90
Lumen Maintenance	> 54,000 hours
IP Rating	IP67
Resistance	UV, solvent, saltwater, flame
Dimming	Triac, ELV, PWM, 0-10V, DMX, SPI
Warranty	5 years

## Certification & Safety

Certifications	UL, CE, REACH, RoHS, CB
Environment	Dry, damp or wet locations

Lumen/m	13W
■ 2700K	484
■ 5300K	484
■ 2700K+5300K	952
Max. Run Length (m)	15

**Order Code**

Series	Temp./Color	Power	Feed Entry	Connector Wire	End Cap	Length (mm)
LN1617TV	2753=2700K+53 00K	013=13W	FF=Front + Front BB=Bottom + Bottom SS=Side + Side FC=Front + Closed FB=Front + Bottom BF=Bottom+Front FLS=Front + Left Side FRS=Front + Right Side BC=Bottom + Closed BLS=Bottom + Left Side BRS=Bottom + Right Side LSC=Left Side + Closed RSC=Right Side + Closed	OW=Open wire 30cm MFCW=Male & female connector with 30cm white cable * Only for injected end cap MFCB=Male & female connector with 30cm black cable * For silicone/mechanical end cap	IJ=Injected end cap (IP67) * Factory made only SEC=Silicone end cap (IP67) MEC=Mechanical end cap (IP67) * End caps are added by default	Min. - 71.4mm Max. run - 15000mm Cut Inc. - 71.4mm

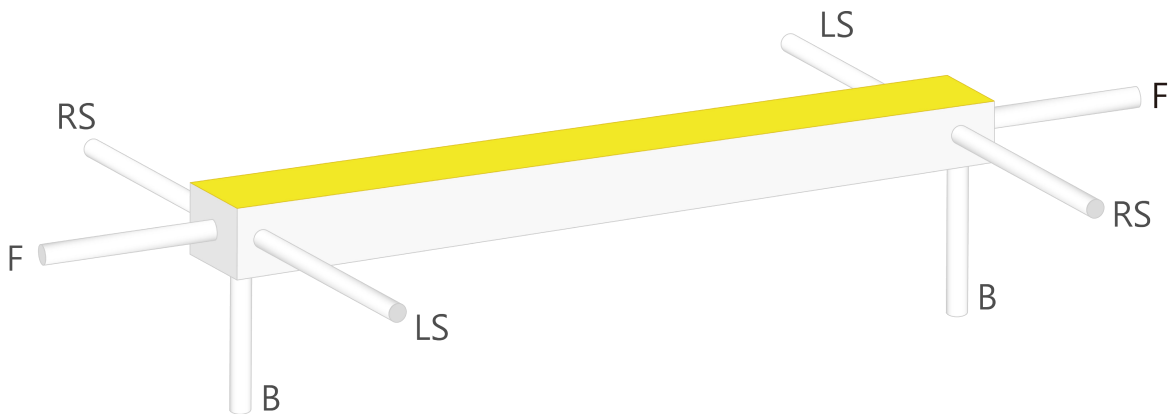
Example: LN1617TV-2753-013-FF-OW-IJ-01000

\* Customizable—Contact Beamever representatives

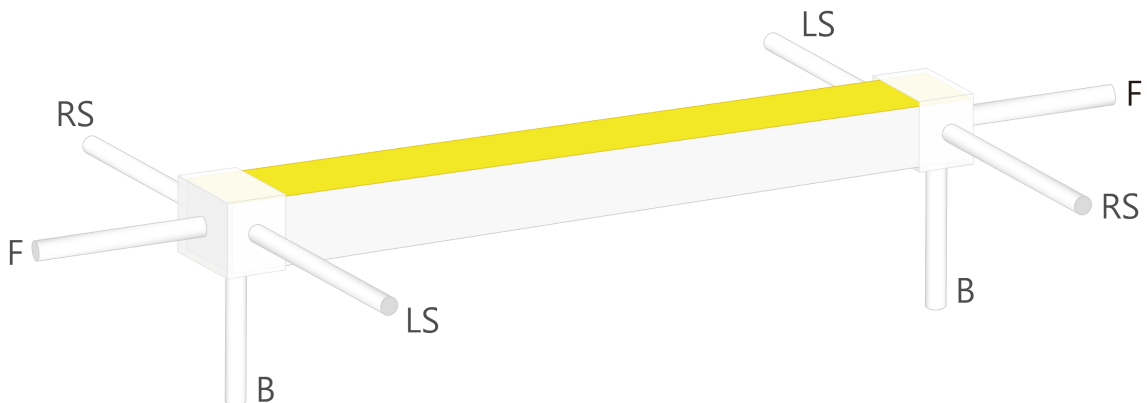
\* Do not install in an environment that is permanently flooded with water or high in humidity, as damage to the neon will occur.

**Feed Entry Options**

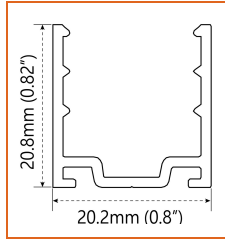
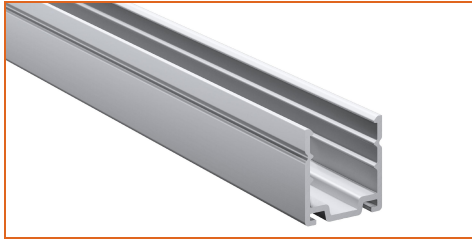
For injected end cap (IP67), factory made only



For silicone end cap / mechanical end cap (IP67)

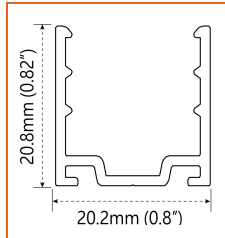
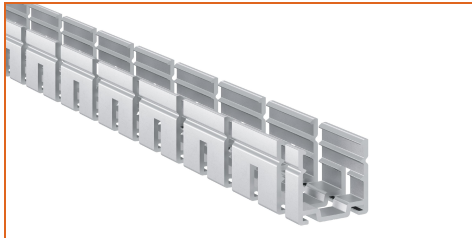


**Mounting Options**



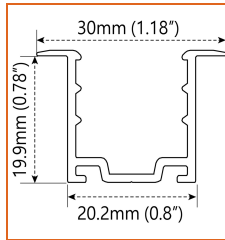
\* Standard length is 1m/pcs.

Name	Straight surface channel
Code	LN1617-SC
Material	Aluminum
Mounting style	Surface mounted
Length	1m
Width	20.2mm
Height	20.8mm
Internal width	/



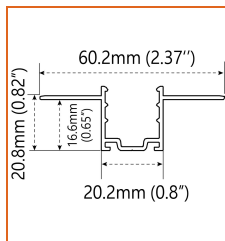
\* Standard length is 1m/pcs.

Name	Bendable surface channel
Code	LN1617-BC
Material	Aluminum
Mounting style	Surface mounted
Length	1m
Width	20.2mm
Height	20.8mm
Internal Width	/



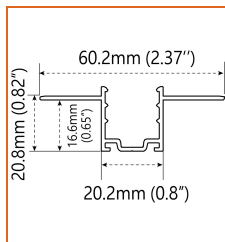
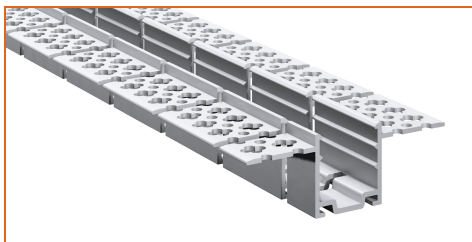
\* Standard length is 1m/pcs.

Name	Straight recessed channel
Code	LN1617-RSC
Material	Aluminum
Mounting style	Recessed mounted
Length	1m
Width	30mm
Height	19.9mm
Internal width	/



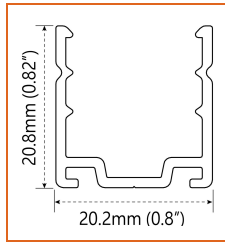
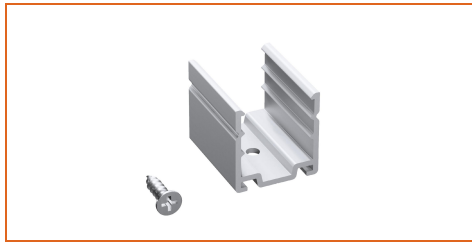
\* Standard length is 1m/pcs.

Name	Mud-in channel
Code	LN1617-MC
Material	Aluminum
Mounting style	Mud-in mounted
Length	1m
Width	60.2mm
Height	16.6mm
Internal Width	/



\* Standard length is 1m/pcs.

Name	Bendable mud-in channel
Code	LN1617-BMC
Material	Aluminum
Mounting style	Mud-in mounted
Length	1m
Width	60.2mm
Height	16.6mm
Internal Width	/



\* Recommend use 4 mounting clip for 1m of neon.

Name	Mounting clip
Code	LN1617-CL
Material	Aluminum
Mounting style	Surface mounted
Length	25mm
Width	20.2mm
Height	20.8mm
Internal Width	/

**Driver Options**

\* Please refer to the spec sheet of each power supply for more detailed information

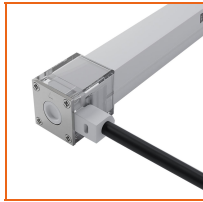
Code	Max Load	Input	Output	Dimming	Environment	Size
XLG-150-24-A	150W	100-305VAC	24VDC	Non-Dim	Dry/Damp/IP67	180x63x35.5mm (L x W x H)
ELG-150-24B-3Y	150W	100-305VAC	24VDC	3 in 1 dimming	Dry/Damp/IP67	219x63x35.5mm (LxWxH)
ELG-150-24DA-3Y	150W	100-305VAC	24VDC	DALI control technology	Dry/Damp/IP67	219x63x35.5mm (L x W x H)
LM-100-24-U2A2	100W	120-277VAC	24VDC	0-10V (1-10V/10V PWM/RX, Push DIM/CCT)	Dry	352x43x30mm (L x W x H)
LRS-150-24	150W	85-132V / 170-264VAC	24VDC	Non-Dim	Dry	99x97x30mm (L x W x H)
PWM-120-24	120W	90 ~ 305V / 127 ~ 431VAC	24VDC	3 in 1 dimming	Dry/Damp/IP67	191x63x37.5mm (LxWxH)

**DMX Decoders & Controllers Options**

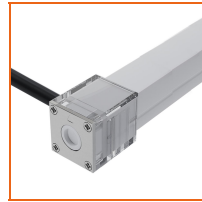
Type	Code	Description	Environment	Size
DMX Decoders	LT-903	3 channels output, Max. 8A current per channel, up to 576W output power	Indoor	122x110x3mm (L x W x H)
Controllers	M2+M3-3A	3 channels output, Max. 3A current per channel, up to 216W output power	Indoor	135x30x20mm (L x W x H)
Controllers	GA2	512 DMX channels, 4 touch sensitive buttons (on/off, mode, previous, next)	Indoor	87x110x10mm (L x W x H)
Controllers	CW4	1024 DMX channels, 6 SECne buttons and a color wheel, ideal for hotels, homes and public environments	Indoor	145x107x10mm (L x W x H)

**Accessories Options (Optional, purchase for extra)**

 <p>Name Silicone closed end cap Code LN1617-SEC-C</p> <hr/> <p>Closed silicone end cap</p>	 <p>Name Silicone front end cap Code LN1617-SEC-F-3P</p> <hr/> <p>Silicone end cap front entry with 30cm black cable, 3 pin</p>
 <p>Name Silicone side end cap Code LN1617-SEC-S-3P</p> <hr/> <p>Silicone end cap side entry with 30cm black cable, 3 pin</p>	 <p>Name Silicone bottom end cap Code LN1617-SEC-B-3P</p> <hr/> <p>Silicone end cap bottom entry with 30cm black cable, 3 pin</p>
 <p>Name Mechanical end cap Code LN1617-MEC-C</p> <hr/> <p>Mechanical closed end cap with screws</p>	 <p>Name Mechanical end cap Code LN1617-MEC-F-3P</p> <hr/> <p>Mechanical end cap with screws, front entry with 30cm black cable, 3 pin</p>



Name Mechanical end cap  
Code LN1617-MEC-LS-3P  
Mechanical end cap with screws, left side entry with 30cm black cable, 3 pin



Name Mechanical end cap  
Code LN1617-MEC-RS-3P  
Mechanical end cap with screws, right side entry with 30cm black cable, 3 pin



Name Mechanical end cap  
Code LN1617-MEC-B-3P  
Mechanical end cap with screws, bottom entry with 30cm black cable, 3 pin



Name Jumper connector  
Code LN1617-JC-3P-67  
Jumper connector with 7cm white cable, 3 pin, IP67



Name Male and female connectors  
Code MFCW-3P-67  
Male and female connectors with 30cm white cable, 3 pin



Name Male and female connectors  
Code MFCB-3P-67  
Male and female connectors with 30cm black cable, 3 pin



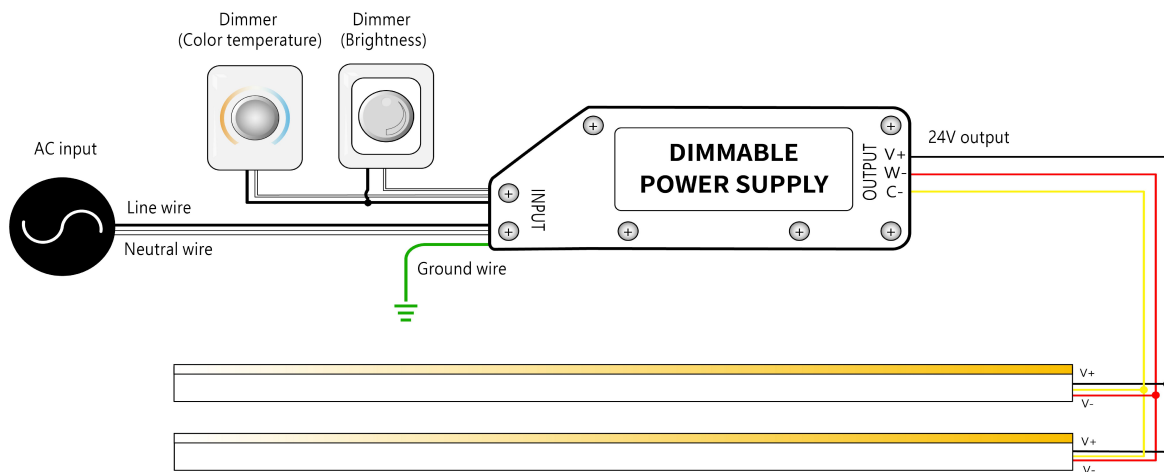
Name Extension connectors  
Code ETCW-3P-67-1M  
Extension male and female connectors with 1m white cable, 3 pin



Name Extension connectors  
Code ETCW-3P-67-5M  
Extension male and female connectors with 5m white cable, 3 pin

**Wiring Diagram**

**Dimmable**



\* Dimmers need to be purchased separately.