

# LINIO NEON 1617 SV PIXEL RGBW

Outdoor · Pixel RGBW · Horizontal Bending

# Beamever

## Features

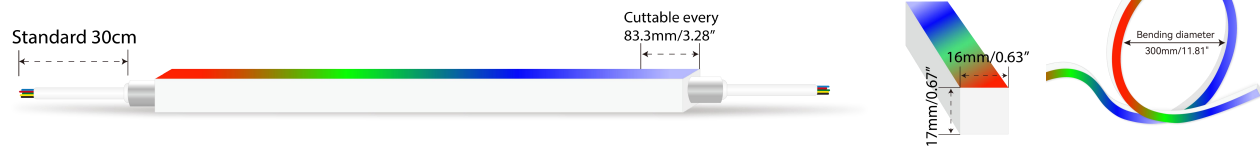
- Factory assembly
- Low voltage 24V DC
- Color chasing effects
- IP67 rated, ideal for indoor and outdoor uses
- UV stable without yellowing or cracking over time
- 5 years warranty



Fixture type	
Project name	
Project phase	
Date	



## Dimension & Bending



## Physical

Dimensions	16mm x 17mm (width x height)
Bend Direction	Horizontal bending
Bend Diameter	300mm
Cutting Interval	83.3mm
Field Cuttable	Yes
Housing Material	Dow Corning
Housing Technique	Co-extrusion
Body Color	White
Finish	Matte
Feed Entry	Front, side, bottom
Feed Length	Standard length 30cm
End Cap	Injected/silicone/mechanical
Mounting	Clips or channels (rigid or bendable)
Storage Temperature	-25~60°C (-13~140°F)
Ambient Temperature	-25~45°C (-13~113°F)
Max. Production Length	30m

## Performance & Electrical

Voltage	24VDC (23.5Vmin, 24.5Vmax)
Beam Angle	110°
Efficacy (lm/W)	20.9lm/W @RGB+W3000K
Pixel/M	12
Lumen Maintenance	> 30,000 hours
IP Rating	IP67
Resistance	UV, solvent, saltwater, flame
Dimming	SPI
IC Type	SM16704PB
Warranty	5 years

## Certification & Safety

Certifications	UL, CE, REACH, RoHS, CB
Environment	Dry, damp or wet locations

Lumen/m	22W
■ R	84
■ G	164
■ B	41
■ W27	199
■ W30	208
■ W40	218
■ RGBW30	459
Max. Run Length (m)	10

# LINIO NEON 1617 SV PIXEL RGBW

Outdoor · Pixel RGBW · Horizontal Bending



## Order Code

Series	Temp./Color	Power	Feed Entry	Connector Wire	End Cap	Length (mm)
LN1617SV	PRGBW30 (3000K)	022=22W	FF=Front + Front BB=Bottom + Bottom SS=Side + Side FC=Front + Closed FB=Front + Bottom BF=Bottom+Front FLS=Front + Left Side FRS=Front + Right Side BC=Bottom + Closed BLS=Bottom + Left Side BRS=Bottom + Right Side LSC=Left Side + Closed RSC=Right Side + Closed	OW=Open wire 30cm MFCW=Male & female connector with 30cm white cable * Only for injected end cap MFCB=Male & female connector with 30cm balck cable * For silicone/mechanical end cap	IJ=Injected end cap (IP67) * Factory made only SEC=Silicone end cap (IP67) MEC=Mechanical end cap (IP67) * End caps are added by default	Min. - 83.3mm Max. run - 10000mm Cut Inc. - 83.3mm

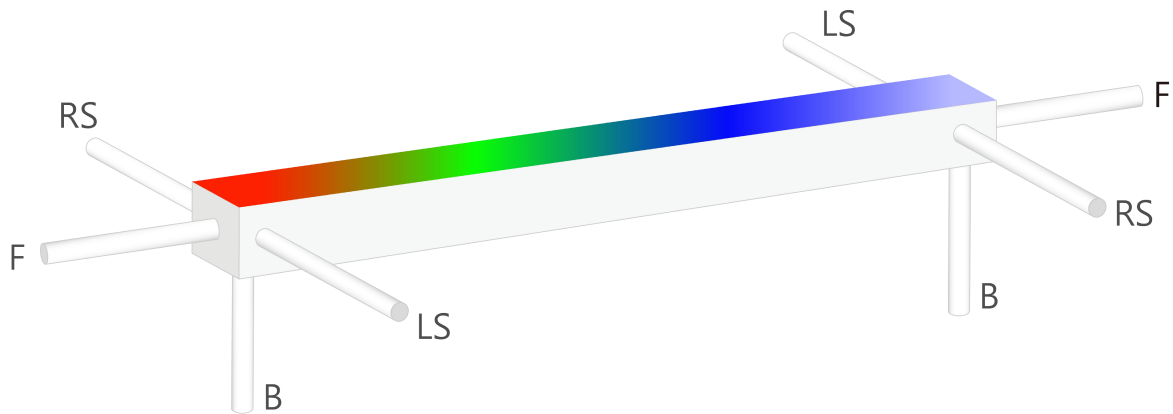
Example: LN1617SV-PRGBW30-022-FF-OW-IJ-01000

\* Customizable—Contact Beamever representatives

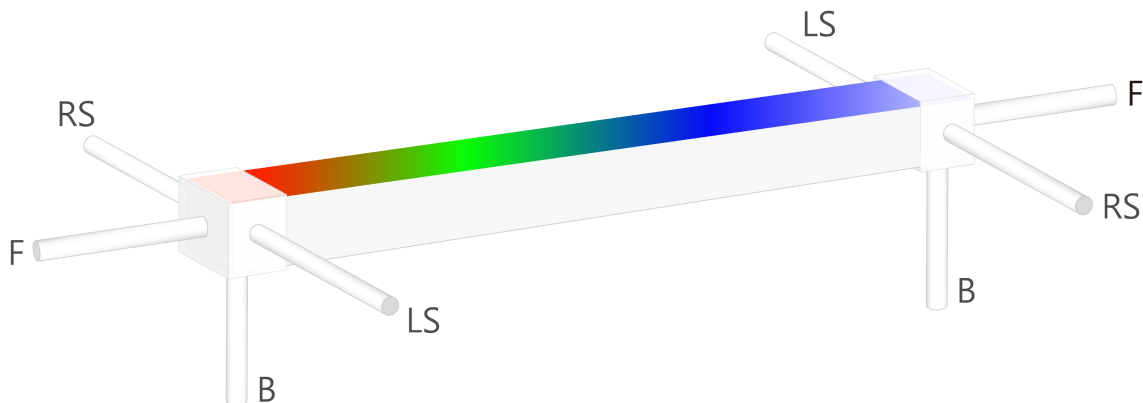
\* Do not install in an environment that is permanently flooded with water or high in humidity, as damage to the neon will occur.

## Feed Entry Options

For injected end cap (IP67), factory made only



For silicone end cap / mechanical end cap (IP67)

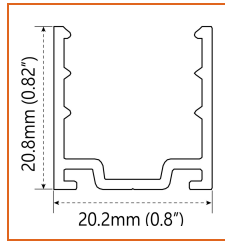


# LINIO NEON 1617 SV PIXEL RGBW

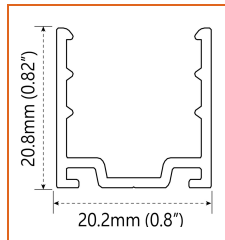
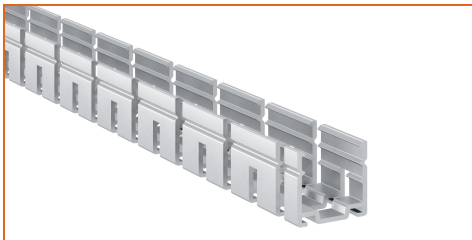
Outdoor · Pixel RGBW · Horizontal Bending



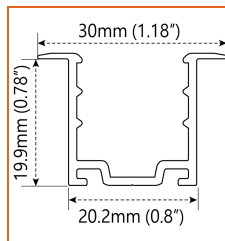
## Mounting Options



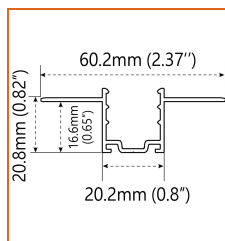
\* Standard length is 1m/pcs.



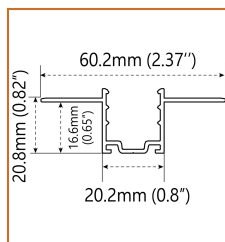
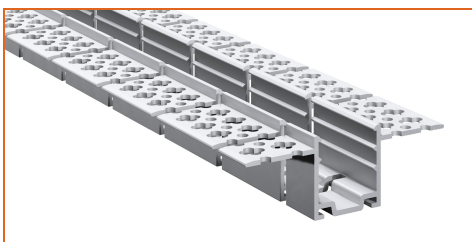
\* Standard length is 1m/pcs.



\* Standard length is 1m/pcs.



\* Standard length is 1m/pcs.



\* Standard length is 1m/pcs.

Name	Straight surface channel
Code	LN1617-SC
Material	Aluminum
Mounting style	Surface mounted
Length	1m
Width	20.2mm
Height	20.8mm
Internal width	/

Name	Bendable surface channel
Code	LN1617-BC
Material	Aluminum
Mounting style	Surface mounted
Length	1m
Width	20.2mm
Height	20.8mm
Internal Width	/

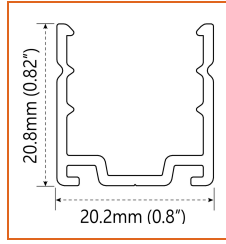
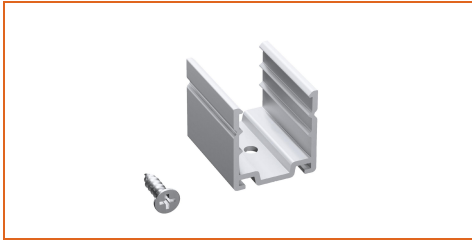
Name	Straight recessed channel
Code	LN1617-RSC
Material	Aluminum
Mounting style	Recessed mounted
Length	1m
Width	30mm
Height	19.9mm
Internal width	/

Name	Mud-in channel
Code	LN1617-MC
Material	Aluminum
Mounting style	Mud-in mounted
Length	1m
Width	60.2mm
Height	16.6mm
Internal Width	/

Name	Bendable mud-in channel
Code	LN1617-BMC
Material	Aluminum
Mounting style	Mud-in mounted
Length	1m
Width	60.2mm
Height	16.6mm
Internal Width	/

# LINIO NEON 1617 SV PIXEL RGBW

Outdoor · Pixel RGBW · Horizontal Bending



\* Recommend use 4 mounting clip for 1m of neon.

Name	Mounting clip
Code	LN1617-CL
Material	Aluminum
Mounting style	Surface mounted
Length	25mm
Width	20.2mm
Height	20.8mm
Internal Width	/

## Driver Options

\* Please refer to the spec sheet of each power supply for more detailed information

Code	Max Load	Input	Output	Dimming	Environment	Size
XLG-150-24-A	150W	100-305VAC	24VDC	Non-Dim	Dry/Damp/IP67	180x63x35.5mm (L x W x H)
LPV-150-24	150W	180-305VAC	24VDC	Non-Dim	Dry/Damp/IP67	148x40x30mm (L x W x H)
LRS-150-24	150W	85-132V / 170-264VAC	24VDC	Non-Dim	Dry	99x97x30mm (L x W x H)

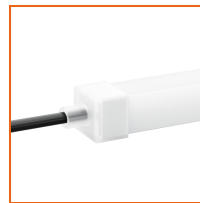
## Controllers Options

Type	Code	Description	Environment	Size
Controllers	SPI-16S	Rich dynamic effects, Max. 10A current output, match with RF remote control M16S, CE, RoHS certified	Indoor	135x30x20mm (L x W x H)

## Accessories Options (Optional, purchase for extra)



Name Silicone closed end cap  
Code LN1617-SEC-C  
Closed silicone end cap



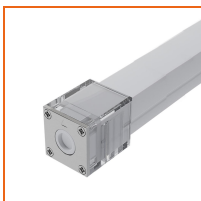
Name Silicone front end cap  
Code LN1617-SEC-F-3P  
Silicone end cap front entry with 30cm black cable, 3 pin



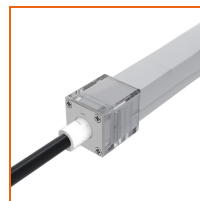
Name Silicone side end cap  
Code LN1617-SEC-S-3P  
Silicone end cap side entry with 30cm black cable, 3 pin



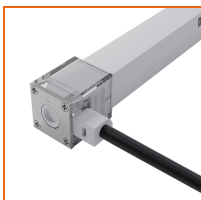
Name Silicone bottom end cap  
Code LN1617-SEC-B-3P  
Silicone end cap bottom entry with 30cm black cable, 3 pin



Name Mechanical end cap  
Code LN1617-MEC-C  
Mechanical closed end cap with screws



Name Mechanical end cap  
Code LN1617-MEC-F-3P  
Mechanical end cap with screws, front entry with 30cm black cable, 3 pin



Name Mechanical end cap  
Code LN1617-MEC-LS-3P  
Mechanical end cap with screws, left side entry with 30cm black cable, 3 pin



Name Mechanical end cap  
Code LN1617-MEC-RS-3P  
Mechanical end cap with screws, right side entry with 30cm black cable, 3 pin

# LINIO NEON 1617 SV PIXEL RGBW

Outdoor · Pixel RGBW · Horizontal Bending



Name Mechanical end cap  
Code LN1617-MEC-B-3P

Mechanical end cap with screws, bottom entry with 30cm black cable, 3 pin



Name Jumper connector  
Code LN1617-JC-3P-67

Jumper connector with 7cm white cable, 3 pin, IP67



Name Male and female connectors  
Code MFCW-3P-67

Male and female connectors with 30cm white cable, 3 pin



Name Male and female connectors  
Code MFCB-3P-67

Male and female connectors with 30cm black cable, 3 pin



Name Extension connectors  
Code ETCW-3P-67-1M

Extension male and female connectors with 1m white cable, 3 pin



Name Extension connectors  
Code ETCW-3P-67-5M

Extension male and female connectors with 5m white cable, 3 pin



Name IP67 Signal connectors  
Code SC-3P-67

Male connector and female signal connector with 20cm cable, 3 pin



Name IP67 T connector  
Code TC-3P-67

Male connector and female T-shaped connector with 20cm cable, 3 pin



Name Silicone glue  
Code SG

Silicone glue

## Wiring Diagram

Dimmable

