

LINIO NEON 1617 SV RGB

Outdoor · RGB · Horizontal Bending

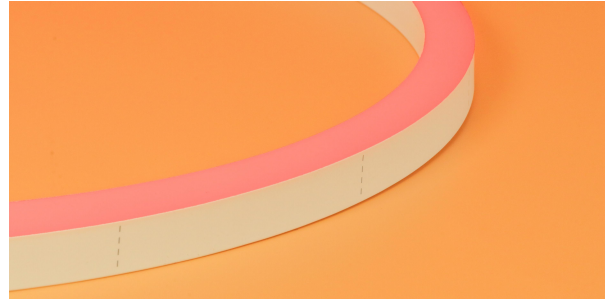
Beamever

Features

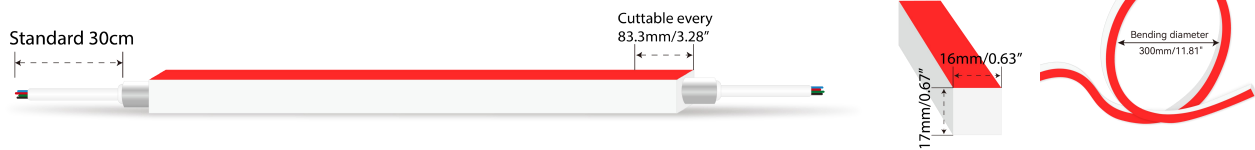
- Factory assembly
- Low voltage 24V DC
- RGB allows for versatile lighting effects
- UV stable without yellowing or cracking over time
- IP67 rated, ideal for indoor and outdoor uses
- UV stable without yellowing or cracking over time



Fixture type	
Project name	
Project phase	
Date	



Dimension & Bending



Physical

Dimensions	16mm x 17mm (width x height)
Bend Direction	Horizontal bending
Bend Diameter	300mm
Cutting Interval	83.3mm
Field Cuttable	Yes
Housing Material	Dow Corning
Housing Technique	Co-extrusion
Body Color	White
Finish	Matte
Feed Entry	Front, side, bottom
Feed Length	Standard length 30cm
End Cap	Injected/silicone/mechanical
Mounting	Clips or channels (rigid or bendable)
Storage Temperature	-25~60°C (-13~140°F)
Ambient Temperature	-25~45°C (-13~113°F)
Max. Production Length	30m

Performance & Electrical

Voltage	24VDC (23.5Vmin, 24.5Vmax)
Beam Angle	110°
Efficacy (lm/W)	19.8lm/W @RGB
Lumen Maintenance	> 30,000 hours
IP Rating	IP67
Resistance	UV, solvent, saltwater, flame
Dimming	DMX
Warranty	5 years

Lumen/m

■ R	80
■ G	142
■ B	34
■ RGB	254
Max. Run Length (m)	13

Certification & Safety

Certifications	UL, CE, REACH, RoHS, CB
Environment	Dry, damp or wet locations

LINIO NEON 1617 SV RGB

Outdoor · RGB · Horizontal Bending



Order Code

Series	Temp./Color	Power	Feed Entry	Connector Wire	End Cap	Length (mm)
LN1617SV	RGB	128=12.8W	FF=Front + Front BB=Bottom + Bottom SS=Side + Side FC=Front + Closed FB=Front + Bottom BF=Bottom+Front FLS=Front + Left Side FRS=Front + Right Side BC=Bottom + Closed BLS=Bottom + Left Side BRS=Bottom + Right Side LSC=Left Side + Closed RSC=Right Side + Closed	OW=Open wire 30cm MFCW=Male & female connector with 30cm white cable * Only for injected end cap MFCB=Male & female connector with 30cm black cable * For silicone/mechanical end cap	IJ=Injected end cap (IP67) * Factory made only SEC=Silicone end cap (IP67) MEC=Mechanical end cap (IP67) * End caps are added by default	Min. - 83.3mm Max. run - 13000mm Cut Inc. - 83.3mm

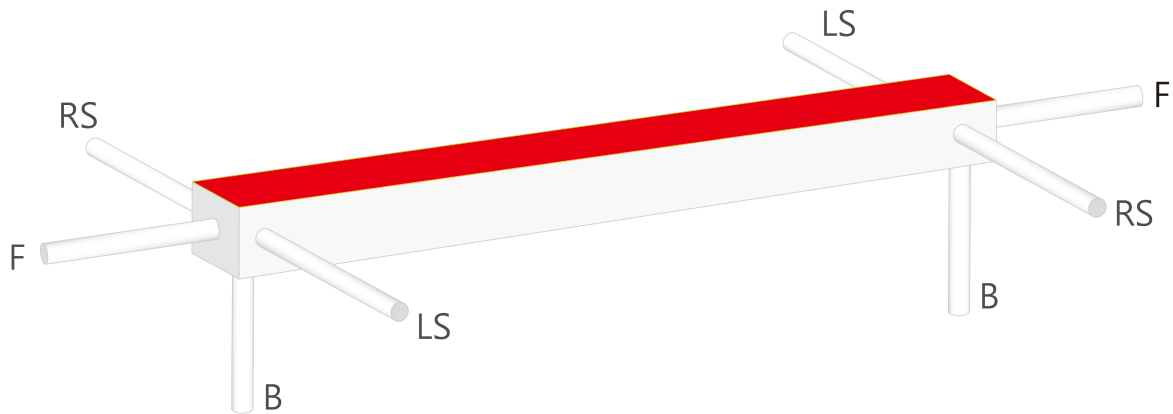
Example: LN1617SV-RGB-128-FF-OW-IJ-01000

* Customizable—Contact Beamever representatives

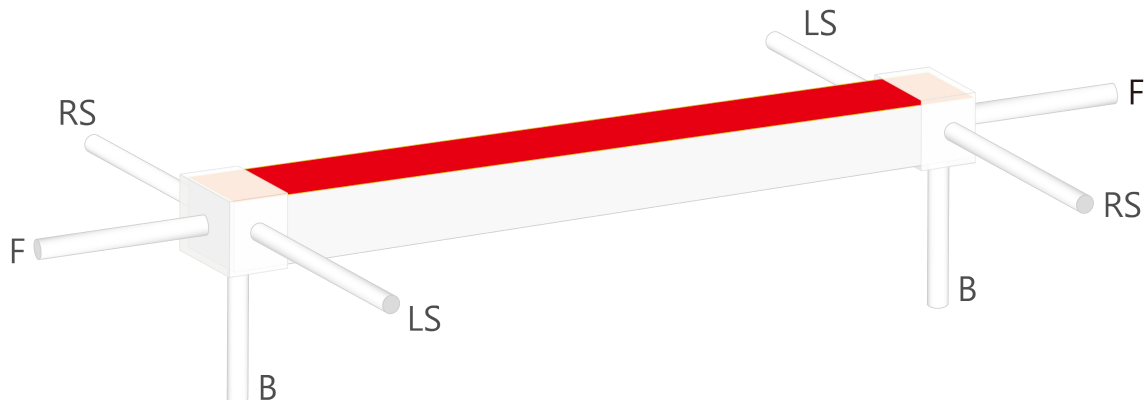
* Do not install in an environment that is permanently flooded with water or high in humidity, as damage to the neon will occur.

Feed Entry Options

For injected end cap (IP67), factory made only



For silicone end cap / mechanical end cap (IP67)

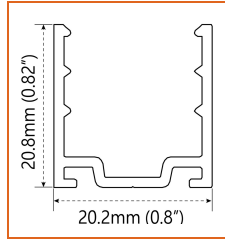


LINIO NEON 1617 SV RGB

Outdoor · RGB · Horizontal Bending



Mounting Options



* Standard length is 1m/pcs.

Name Straight surface channel

Code LN1617-SC

Material Aluminum

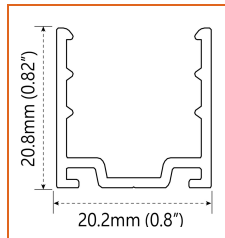
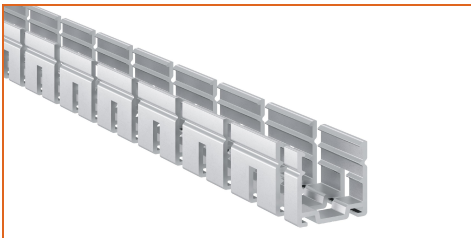
Mounting style Surface mounted

Length 1m

Width 20.2mm

Height 20.8mm

Internal width /



* Standard length is 1m/pcs.

Name Bendable surface channel

Code LN1617-BC

Material Aluminum

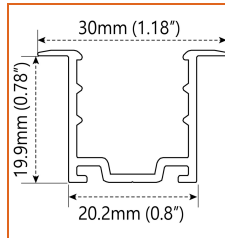
Mounting style Surface mounted

Length 1m

Width 20.2mm

Height 20.8mm

Internal Width /



* Standard length is 1m/pcs.

Name Straight recessed channel

Code LN1617-RSC

Material Aluminum

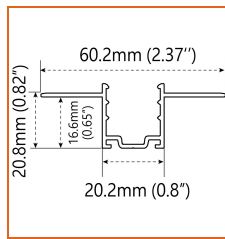
Mounting style Recessed mounted

Length 1m

Width 30mm

Height 19.9mm

Internal width /



* Standard length is 1m/pcs.

Name Mud-in channel

Code LN1617-MC

Material Aluminum

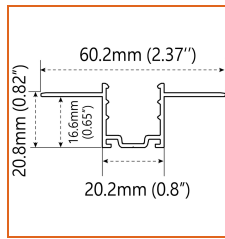
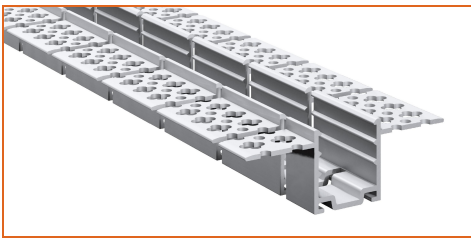
Mounting style Mud-in mounted

Length 1m

Width 60.2mm

Height 16.6mm

Internal Width /



* Standard length is 1m/pcs.

Name Bendable mud-in channel

Code LN1617-BMC

Material Aluminum

Mounting style Mud-in mounted

Length 1m

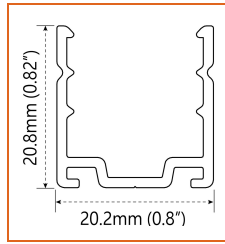
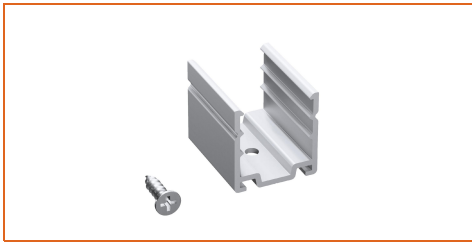
Width 60.2mm

Height 16.6mm

Internal Width /

LINIO NEON 1617 SV RGB

Outdoor · RGB · Horizontal Bending



* Recommend use 4 mounting clip for 1m of neon.

Name	Mounting clip
Code	LN1617-CL
Material	Aluminum
Mounting style	Surface mounted
Length	25mm
Width	20.2mm
Height	20.8mm
Internal Width	/

Driver Options

* Please refer to the spec sheet of each power supply for more detailed information

Code	Max Load	Input	Output	Dimming	Environment	Size
XLG-150-24-A	150W	100-305VAC	24VDC	Non-Dim	Dry/Damp/IP67	180x63x35.5mm (L x W x H)
ELG-150-24B-3Y	150W	100-305VAC	24VDC	3 in 1 dimming	Dry/Damp/IP67	219x63x35.5mm (LxWxH)
ELG-150-24DA-3Y	150W	100-305VAC	24VDC	DALI control technology	Dry/Damp/IP67	219x63x35.5mm (L x W x H)
LPV-150-24	150W	180-305VAC	24VDC	Non-Dim	Dry/Damp/IP67	148x40x30mm (L x W x H)
LRS-150-24	150W	85-132V / 170-264VAC	24VDC	Non-Dim	Dry	99x97x30mm (L x W x H)
PWM-120-24	120W	90 ~ 305V / 127 ~ 431VAC	24VDC	3 in 1 dimming	Dry/Damp/IP67	191x63x37.5mm (LxWxH)

DMX Decoders & Controllers & Power Repeaters Options

Type	Code	Description	Environment	Size
DMX Decoders	LT- 854-5A	4 channels output, Max. 5A current per channel, up to 480W output power	Indoor	175x42x33mm (L x W x H)
Controllers	EX4S	512 DMX channels	Indoor	86x86x36mm (L x W x H)
Controllers	M6+M3-3A	3 Channels output, Max 3A current per channel, up to 216W output power	Indoor	135x30x20mm (L x W x H)
Power Repeaters	LT-3040-5A	3 Channels output, Max 6A current per channel, up to 480W output power	Indoor	175x44x30mm (L x W x H)

Accessories Options (Optional, purchase for extra)



Name Silicone closed end cap

Code LN1617-SEC-C

Closed silicone end cap



Name Silicone front end cap

Code LN1617-SEC-F-4P

Silicone end cap front entry with 30cm black cable, 4 pin



Name Silicone side end cap

Code LN1617-SEC-S-4P

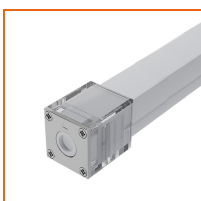
Silicone end cap side entry with 30cm black cable, 4 pin



Name Silicone bottom end cap

Code LN1617-SEC-B-4P

Silicone end cap bottom entry with 30cm black cable, 4 pin



Name Mechanical end cap

Code LN1617-MEC-C

Mechanical closed end cap with screws



Name Mechanical end cap

Code LN1617-MEC-F-4P

Mechanical end cap with screws, front entry with 30cm black cable, 4 pin

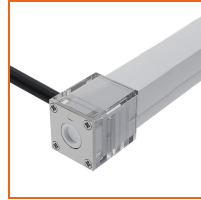
LINIO NEON 1617 SV RGB

Outdoor · RGB · Horizontal Bending



Name Mechanical end cap
Code LN1617-MEC-LS-4P

Mechanical end cap with screws, left side entry with 30cm black cable, 4 pin



Name Mechanical end cap
Code LN1617-MEC-RS-4P

Mechanical end cap with screws, right side entry with 30cm black cable, 4 pin



Name Mechanical end cap
Code LN1617-MEC-B-4P

Mechanical end cap with screws, bottom entry with 30cm black cable, 4 pin



Name Jumper connector
Code LN1617-JC-4P-67

Jumper connector with 7cm white cable, 4 pin, IP67



Name Male and female connectors
Code MFCB-4P-67

Male and female connectors with 30cm black cable, 4 pin



Name Male and female connectors
Code MFCW-4P-67

Male and female connectors with 30cm white cable, 4 pin



Name Extension connectors
Code ETCW-4P-67-1M

Extension male and female connectors with 1m white cable, 4 pin



Name Extension connectors
Code ETCW-4P-67-5M

Extension male and female connectors with 5m white cable, 4 pin

LINIO NEON 1617 SV RGB

Outdoor · RGB · Horizontal Bending



Wiring Diagram

Dimmable

