

# LINIO NEON 1617 TV RGB

Outdoor · RGB · Vertical Bending

# Beamever

## Features

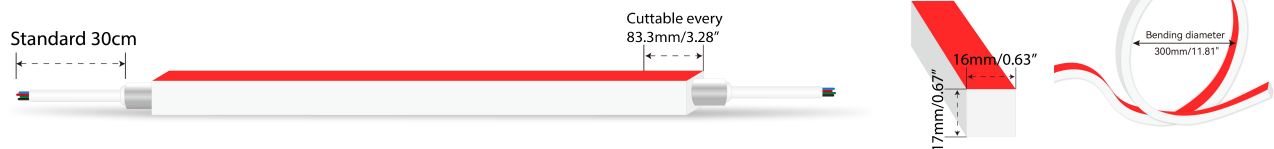
- Factory assembly
- Low voltage 24V DC
- RGB allows for versatile lighting effects
- Max run length up to 13m from single power feed
- IP67 rated, ideal for indoor and outdoor use
- UV stable without yellowing or cracking over time



Fixture type	
Project name	
Project phase	
Date	



## Dimension & Bending



## Physical

Dimensions	16mm x 17mm (width x height)
Bend Direction	Vertical bending
Bend Diameter	300mm
Cutting Interval	83.3mm
Field Cuttable	Yes
Housing Material	Dow Corning
Housing Technique	Co-extrusion
Body Color	White
Finish	Matte
Feed Entry	Front, side, bottom
Feed Length	Standard length 30cm
End Cap	Injected/silicone/mechanical
Mounting	Clips or channels (rigid or bendable)
Storage Temperature	-25~60°C (-13~140°F)
Ambient Temperature	-25~45°C (-13~113°F)
Max. Production Length	30m

## Performance & Electrical

Voltage	24VDC (23.5Vmin, 24.5Vmax)
Beam Angle	110°
Efficacy (lm/W)	27.1lm/W @RGB 12.8W
Lumen Maintenance	> 30,000 hours
IP Rating	IP67
Resistance	UV, solvent, saltwater, flame
Dimming	DMX
Warranty	5 years

## Certification & Safety

Certifications	UL, CE, REACH, RoHS, CB
Environment	Dry, damp or wet locations

Lumen/m	12.8W
■ R	104
■ G	203
■ B	40
■ RGB	347
Max. Run Length (m)	13

# LINIO NEON 1617 TV RGB

Outdoor · RGB · Vertical Bending



## Order Code

Series	Temp./Color	Power	Feed Entry	Connector Wire	End Cap	Length (mm)
LN1617TV	RGB	128=12.8W	FF=Front + Front BB=Bottom + Bottom SS=Side + Side FC=Front + Closed FB=Front + Bottom BF=Bottom+Front FLS=Front + Left Side FRS=Front + Right Side BC=Bottom + Closed BLS=Bottom + Left Side BRS=Bottom + Right Side LSC=Left Side + Closed RSC=Right Side + Closed	OW=Open wire 30cm MFCW=Male & female connector with 30cm white cable * Only for injected end cap MFCB=Male & female connector with 30cm black cable * For silicone/mechanical end cap	IJ=Injected end cap (IP67) * Factory made only SEC=Silicone end cap (IP67) MEC=Mechanical end cap (IP67) * End caps are added by default	Min. - 83.3mm Max. run - 13000mm Cut Inc. - 83.3mm

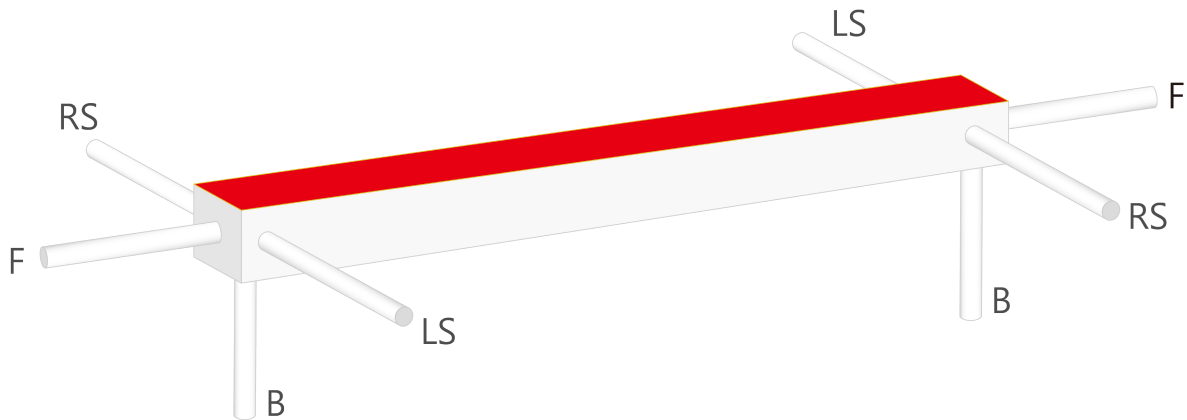
Example: LN1617TV-RGB-128-FF-OW-IJ-01000

\* Customizable—Contact Beamever representatives

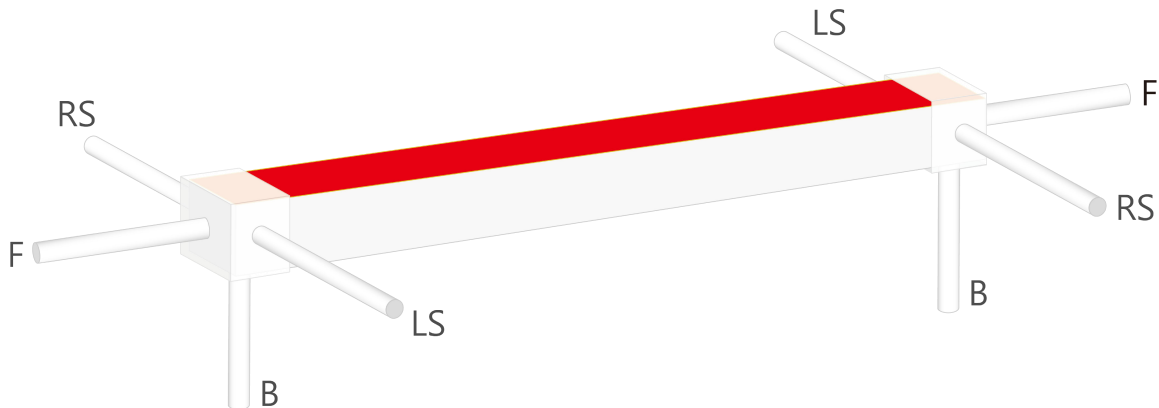
\* Do not install in an environment that is permanently flooded with water or high in humidity, as damage to the neon will occur.

## Feed Entry Options

For injected end cap (IP67), factory made only



For silicone end cap / mechanical end cap (IP67)

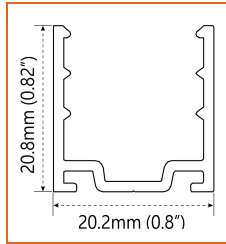


# LINIO NEON 1617 TV RGB

Outdoor · RGB · Vertical Bending

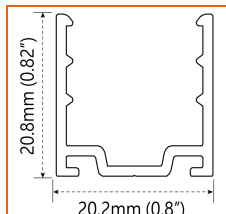
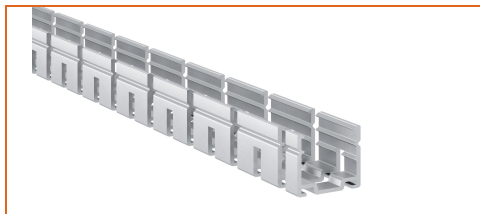


## Mounting Options



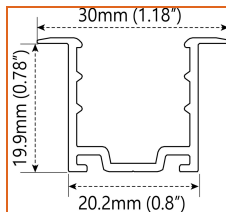
\* Standard length is 1m/pcs.

Name	Straight surface channel
Code	LN1617-SC
Material	Aluminum
Mounting style	Surface mounted
Length	1m
Width	20.2mm
Height	20.8mm
Internal width	/



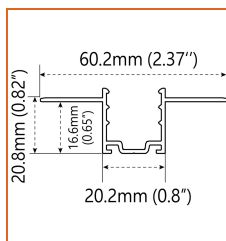
\* Standard length is 1m/pcs.

Name	Bendable surface channel
Code	LN1617-BC
Material	Aluminum
Mounting style	Surface mounted
Length	1m
Width	20.2mm
Height	20.8mm
Internal Width	/



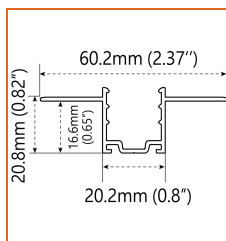
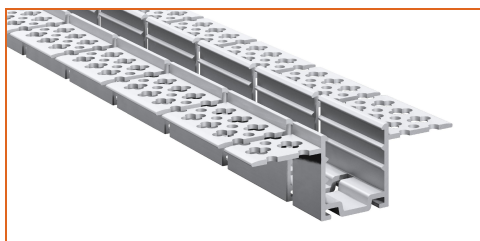
\* Standard length is 1m/pcs.

Name	Straight recessed channel
Code	LN1617-RSC
Material	Aluminum
Mounting style	Recessed mounted
Length	1m
Width	30mm
Height	19.9mm
Internal width	/



\* Standard length is 1m/pcs.

Name	Mud-in channel
Code	LN1617-MC
Material	Aluminum
Mounting style	Mud-in mounted
Length	1m
Width	60.2mm
Height	16.6mm
Internal Width	/

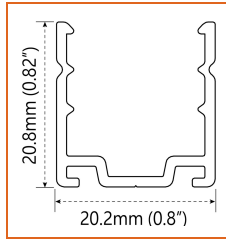
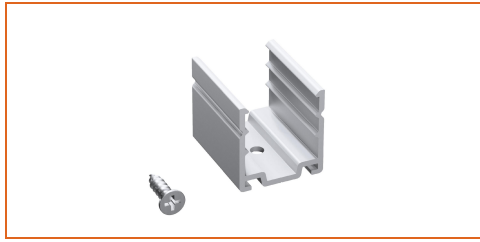


\* Standard length is 1m/pcs.

Name	Bendable mud-in channel
Code	LN1617-BMC
Material	Aluminum
Mounting style	Mud-in mounted
Length	1m
Width	60.2mm
Height	16.6mm
Internal Width	/

# LINIO NEON 1617 TV RGB

Outdoor · RGB · Vertical Bending



\* Recommend use 4 mounting clip for 1m of neon.

Name	Mounting clip
Code	LN1617-CL
Material	Aluminum
Mounting style	Surface mounted
Length	25mm
Width	20.2mm
Height	20.8mm
Internal Width	/

## Driver Options

\* Please refer to the spec sheet of each power supply for more detailed information

Code	Max Load	Input	Output	Dimming	Environment	Size
XLG-150-24-A	150W	100-305VAC	24VDC	Non-Dim	Dry/Damp/IP67	180x63x35.5mm (L x W x H)
ELG-150-24B-3Y	150W	100-305VAC	24VDC	3 in 1 dimming	Dry/Damp/IP67	219x63x35.5mm (LxWxH)
ELG-150-24DA-3Y	150W	100-305VAC	24VDC	DALI control technology	Dry/Damp/IP67	219x63x35.5mm (L x W x H)
LPV-150-24	150W	180-305VAC	24VDC	Non-Dim	Dry/Damp/IP67	148x40x30mm (L x W x H)
LRS-150-24	150W	85-132V / 170-264VAC	24VDC	Non-Dim	Dry	99x97x30mm (L x W x H)
PWM-120-24	120W	90 ~ 305V / 127 ~ 431VAC	24VDC	3 in 1 dimming	Dry/Damp/IP67	191x63x37.5mm (LxWxH)

## DMX Decoders & Controllers & Power Repeaters Options

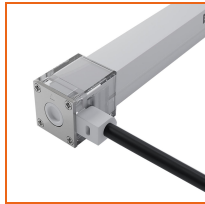
Type	Code	Description	Environment	Size
DMX Decoders	LT- 854-5A	4 channels output, Max. 5A current per channel, up to 480W output power	Indoor	175x42x33mm (L x W x H)
Controllers	EX4S	512 DMX channels	Indoor	86x86x36mm (L x W x H)
Controllers	M6+M3-3A	3 Channels output, Max 3A current per channel, up to 216W output power	Indoor	135x30x20mm (L x W x H)
Power Repeaters	LT-3040-5A	3 Channels output, Max 6A current per channel, up to 480W output power	Indoor	175x44x30mm (L x W x H)

## Accessories Options (Optional, purchase for extra)

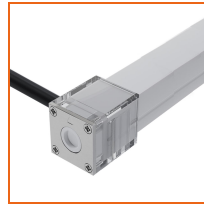
	<p>Name Silicone closed end cap</p> <p>Code LN1617-SEC-C</p> <p>Closed silicone end cap</p>		<p>Name Silicone front end cap</p> <p>Code LN1617-SEC-F-4P</p> <p>Silicone end cap front entry with 30cm black cable, 4 pin</p>
	<p>Name Silicone side end cap</p> <p>Code LN1617-SEC-S-4P</p> <p>Silicone end cap side entry with 30cm black cable, 4 pin</p>		<p>Name Silicone bottom end cap</p> <p>Code LN1617-SEC-B-4P</p> <p>Silicone end cap bottom entry with 30cm black cable, 4 pin</p>
	<p>Name Mechanical end cap</p> <p>Code LN1617-MEC-C</p> <p>Mechanical closed end cap with screws</p>		<p>Name Mechanical end cap</p> <p>Code LN1617-MEC-F-4P</p> <p>Mechanical end cap with screws, front entry with 30cm black cable, 4 pin</p>

# LINIO NEON 1617 TV RGB

Outdoor · RGB · Vertical Bending



Name Mechanical end cap  
Code LN1617-MEC-LS-4P  
Mechanical end cap with screws, left side entry with 30cm black cable, 4 pin



Name Mechanical end cap  
Code LN1617-MEC-RS-4P  
Mechanical end cap with screws, right side entry with 30cm black cable, 4 pin



Name Mechanical end cap  
Code LN1617-MEC-B-4P  
Mechanical end cap with screws, bottom entry with 30cm black cable, 4 pin



Name Jumper connector  
Code LN1617-JC-4P-67  
Jumper connector with 7cm white cable, 4 pin, IP67



Name Male and female connectors  
Code MFCW-4P-67  
Male and female connectors with 30cm white cable, 4 pin



Name Male and female connectors  
Code MFCB-4P-67  
Male and female connectors with 30cm black cable, 4 pin



Name Extension connectors  
Code ETCW-4P-67-1M  
Extension male and female connectors with 1m white cable, 4 pin



Name Extension connectors  
Code ETCW-4P-67-5M  
Extension male and female connectors with 5m white cable, 4 pin

## Wiring Diagram

Dimmable

